

Working Instructions

- mechanical -



Xperia XA2

H3113, H3123, H3133, H4113, H4133

CONTENTS

1	Exterior Views.....	6
1.1	H3113,H3123,H3133,H4113,H4133	6
2	Tools	7
3	Mandatory Replacement Parts List	11
4	Disassembly.....	12
4.1	Cap Tray SIM.....	14
4.2	SD Tray (H3113,H3123,H3133) or SD/SIM Tray (H4113,H4133)	14
4.3	Battery Cover Assy and FP Module Assy	14
4.3.1	Battery Cover Assy	14
4.3.2	FP Module Assy.....	17
4.3.3	Adhesive NFC_A and Adhesive NFC_B.....	18
4.3.4	Adhesive Battery Cover Top, Adhesive Battery Cover Bottom, Adhesive Battery Cover Left and Adhesive Battery Cover Right.....	18
4.3.5	Copper Foil Battery Cover	18
4.3.6	NFC Antenna.....	19
4.4	Conductive Tape Sub Antenna	19
4.5	Sub Antenna.....	19
4.5.1	Sub Antenna	19
4.5.2	Main Camera Lens Assy	20
4.5.3	Spring Antenna.....	21
4.6	Main Camera	21
4.6.1	Rubber Main Camera.....	21
4.6.2	Main Camera	22
4.6.3	Sponge Main Camera BtB Conn.....	22
4.7	Main PBA.....	22
4.7.1	Main PBA.....	22
4.7.2	Audio Jack FPC Assy.....	25
4.7.3	Copper Foil Front Camera	25
4.7.4	Front Camera	25
4.7.5	Rubber PL Sensor	26
4.7.6	Rubber 2nd MIC	26
4.7.7	Gasket BtB FP Module, Gasket BTB Front Cam&AJ, Gasket BTB LCM and Gasket BTB Sidekey FPC.....	26
4.8	CU Label Tray.....	26
4.8.1	CU Label Tray	26
4.8.2	CU Label	27
4.9	Bracket Main Camera	27
4.10	Ear Speaker and Adhesive Ear Speaker	28
4.11	Main Antenna Speaker Box.....	28
4.11.1	Main Antenna Speaker Box	28
4.11.2	Speaker Sponge	29
4.11.3	Contact Clip Speaker Box.....	30
4.11.4	Spring Antenna.....	30
4.12	RF Cable White and RF Cable Black	30

4.13 Sub PBA Assy	31
4.13.1 Sub PBA Assy	31
4.13.2 Gasket BTB Sub PBA	32
4.13.3 Sponge 1st Mic	32
4.14 Battery and Adhesive Battery	33
4.14.1 Battery and Adhesive Battery	33
4.14.2 Sponge Battery Connector	34
4.15 Side Panel Keys and Keys	34
4.15.1 Side Panel Keys and Adhesive LCM Keys Side	34
4.15.2 Key Power_Volume and Key Camera	35
4.16 Film Bracket Main Antenna and Bracket Main Antenna	36
4.17 Sidekey FPC Assy	36
4.17.1 Sidekey FPC Assy	36
4.17.2 Adhesive Sidekey FPC Main, Adhesive Side Key FPC_B and Adhesive Side Key FPC_C	37
4.17.3 Adhesive Power_Volume Key FPC and Adhesive Camera Key FPC	37
4.18 Side Panel SIM/SD	38
4.18.1 Side Panel SIM/SD	38
4.18.2 Adhesive LCM SIM/SD Side	38
4.19 Display Cover Assy	39
4.19.1 Water Intrusion Label Rectangle	39
4.19.2 Water Intrusion Label	39
4.19.3 Speaker Mesh	39
5 Reassembly	40
5.1 Display Cover Assy	42
5.1.1 Speaker Mesh	42
5.1.2 Water Intrusion Label	42
5.1.3 Water Intrusion Label Rectangle	42
5.2 Side Panel SIM/SD	42
5.2.1 Adhesive LCM SIM/SD Side	42
5.2.2 Side Panel SIM/SD	43
5.3 Sidekey FPC Assy	44
5.3.1 Adhesive Power_Volume Key FPC and Adhesive Camera Key FPC	44
5.3.2 Adhesive Sidekey FPC Main, Adhesive Side Key FPC_B and Adhesive Side Key FPC_C	44
5.3.3 Sidekey FPC Assy	45
5.4 Bracket Main Antenna and Film Bracket Main Antenna	46
5.5 Keys and Side Panel Keys	47
5.5.1 Key Camera and Key Power_Volume	47
5.5.2 Adhesive LCM Keys Side and Side Panel Keys	47
5.6 Adhesive Ear Speaker and Ear Speaker	49
5.7 Bracket Main Camera	49
5.8 CU Label Tray	50
5.8.1 CU Label	50
5.8.2 CU Label Tray	50
5.9 Main PBA	50

5.9.1 Gasket BtB FP Module, Gasket BTB Front Cam&AJ, Gasket BTB LCM and Gasket BTB Sidekey FPC.....	50
5.9.2 Rubber 2nd MIC	50
5.9.3 Rubber PL Sensor	51
5.9.4 Front Camera	51
5.9.5 Copper Foil Front Camera	51
5.9.6 Audio Jack FPC Assy.....	51
5.9.7 Main PBA.....	52
5.10 Main Camera	55
5.10.1 Sponge Main Camera BtB Conn.....	55
5.10.2 Main Camera	55
5.10.3 Rubber Main Camera.....	55
5.11 Sub PBA Assy.....	56
5.11.1 Sponge 1st Mic	56
5.11.2 Gasket BTB Sub PBA.....	56
5.11.3 Sub PBA Assy.....	56
5.12 RF Cable Black and RF Cable White	57
5.13 Main Antenna Speaker Box.....	58
5.13.1 Spring Antenna.....	58
5.13.2 Contact Clip Speaker Box.....	59
5.13.3 Speaker Sponge	59
5.13.4 Main Antenna Speaker Box	59
5.14 Adhesive Battery and Battery.....	60
5.14.1 Sponge Battery Connector	60
5.14.2 Adhesive Battery and Battery.....	60
5.15 Sub Antenna.....	62
5.15.1 Spring Antenna.....	62
5.15.2 Main Camera Lens Assy	63
5.15.3 Sub Antenna	63
5.16 Conductive Tape Sub Antenna	64
5.17 FP Module Assy and Battery Cover Assy	64
5.17.1 NFC Antenna.....	64
5.17.2 Copper Foil Battery Cover	64
5.17.3 Adhesive Battery Cover Top, Adhesive Battery Cover Bottom, Adhesive Battery Cover Left and Adhesive Battery Cover Right.....	64
5.17.4 Adhesive NFC_A and Adhesive NFC_B.....	65
5.17.5 FP Module Assy.....	65
5.17.6 Battery Cover Assy.....	66
5.18 SD Tray (H3113,H3123,H3133) or SD/SIM Tray (H4113/H4133)	69
5.19 Cap Tray SIM.....	70
6 Battery Reuse Instruction.....	71
6.1 Battery Handling Notices	71
6.2 Dot Mark Check.....	71
6.3 Dot Marking 1	71
6.4 Appearance Check	72
6.5 BtB Connector Check.....	74
6.6 Dot Marking 2.....	75

7 Revision History 76

For general information about mechanical repair related issues, refer to 00154064: Generic Repair Manual - mechanical

Always firstly disconnect the Battery connector to cut off power supply when the Sub Antenna is disassembled.

Always finally connect the Battery connector before the Sub Antenna is reassembled.

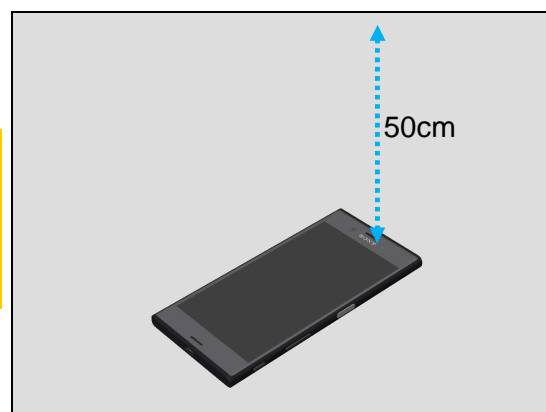
If there are no special indications of 'H3113, H3123, H3133, H4113, or H4133', H3113, H3123, H3133, H4113 and H4133 share the same repair method as common sections, whose pictures are used with H4113.

1309-7255 CS-Everest (Repair -Mechanical- Tools and Equipment (include Repair Software), Info-Center number is RE4251) Calibration or Aged Battery Reset by Emma must be performed when following Reassembly or Replacement.

		CS-Everest Calibration			Emma
		Proximity Light Sensor	Smart Amp	Color ID Flashing	Aged Battery Reset
Reassembly	Main PBA	O			
	Display Cover Assy	O			
	Rubber PL Sensor	O			
Replacement	Main PBA	O	O	O	
	Display Cover Assy	O			
	Rubber PL Sensor	O			
	Battery				O
	Main Antenna Speaker Box		O		

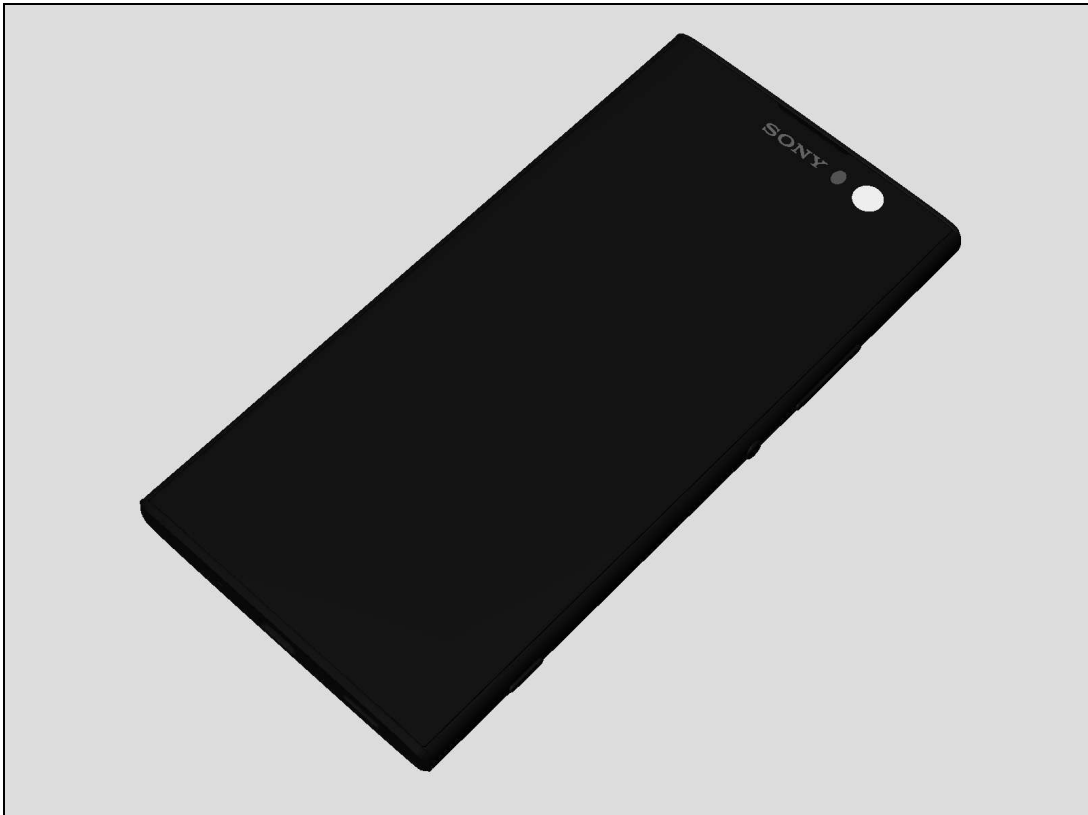
Note! When performing proximity sensor calibration, put the phone unit on a stable place, facing up, and no any objects within 50cm.

Remove the protection film if sensor window is covered by the protection film.



1 Exterior Views

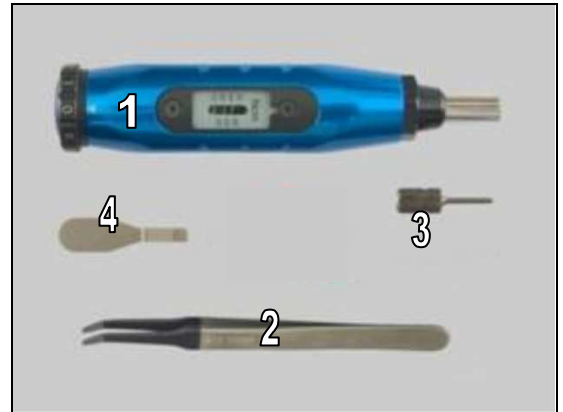
1.1 H3113,H3123,H3133,H4113,H4133



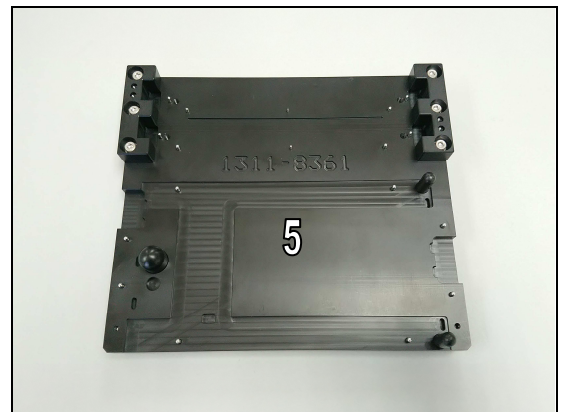
2 Tools

SPECIAL TOOLS

1. Torque Screwdriver 2-30Ncm (1233-2284)
2. Flex Film Assembly Tool (NTZ 112 521)
3. Bits JCIS No.0 (NTZ 112 1052)
4. Front Opening Tool (NTZ 112 302/2)

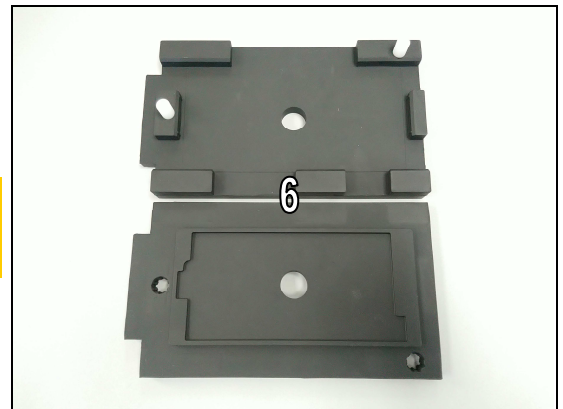


5. Panels Adhesive Fixture (1311-8361)



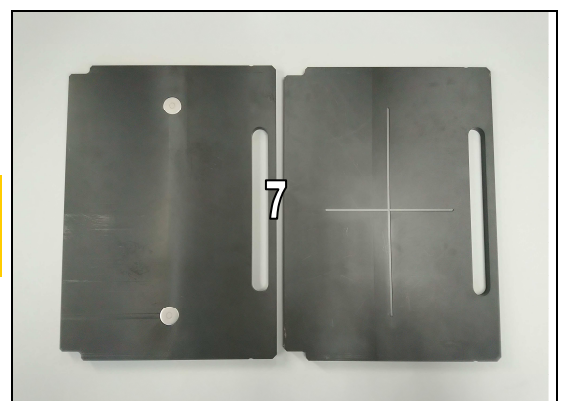
6. Press Rubber Inlay (1311-8360)

Note! Generic Wheel Press Tool(1311-1952) and Press Rubber Inlay(1311-8360) are used together for pressing Battery Cover Assy.



7. Inlay adapter (1311-2202)

Note! Generic Press Tool(1273-4413), Press Rubber Inlay (1311-8360) and Inlay adapter (1311-2202) are used together for pressing Battery Cover Assy.



Tools

8. Generic Wheel Press Tool (1311-1952)



9. Press Clamp (1310-9176)



10. Press Pad NFC (1311-8432)

Note! Press Pad NFC (1311-8432) and Press Clamp (1310-9176) are used together for pressing Adhesive NFC_A and Adhesive NFC_B.



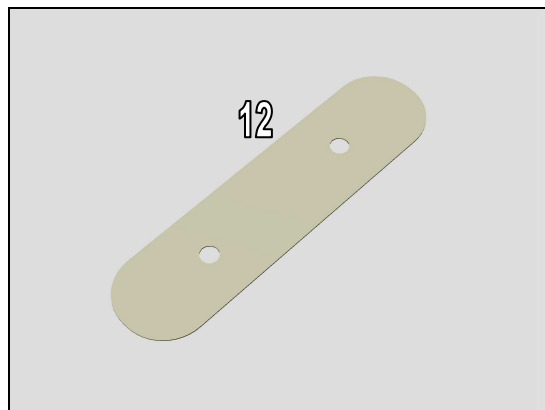
11. Press Spacer (1305-2638)

Note! Press Spacer (1305-2638) and Press Clamp (1310-9176) are used together for pressing Battery.



Tools

12. Flexible Disassembly tool (1284-7796)



13. Media Cable Type C Cable (Black) (1302-1935)

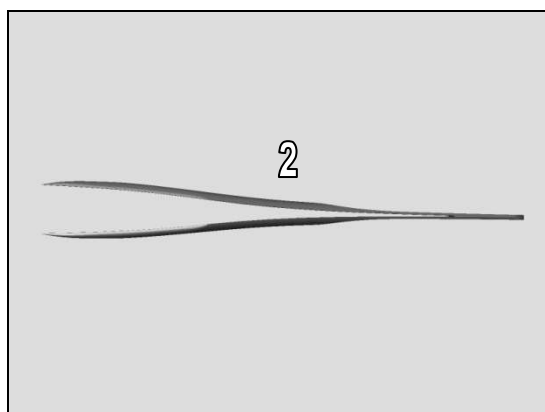


STANDARD TOOLS

1. Pointed Plastic Tweezers



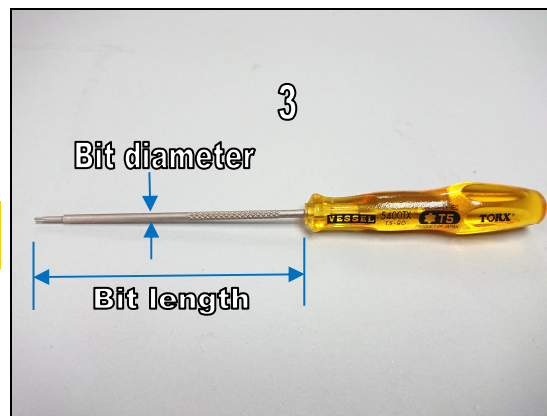
2. Blunt flat-tip Plastic Tweezers



Tools

3. T5 Screwdriver

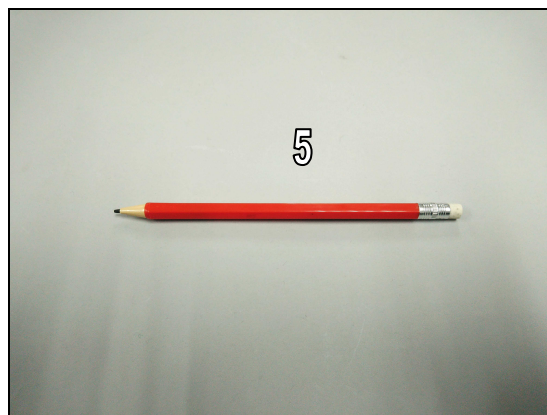
The bit length is no less than 70mm, and bit diameter is no thicker than 2.5mm.



4. Suction Cup



5. Pencil with eraser end



6. Hot Air Gun with Temp control



3 Mandatory Replacement Parts List

The Mandatory Replacement Parts List is embedded.
Click the icon to open the file.



H31_H41

Mandatory Replacement



Targeted replacement parts are listed

[illegible]

Mandatory replacement parts for refurbishment.

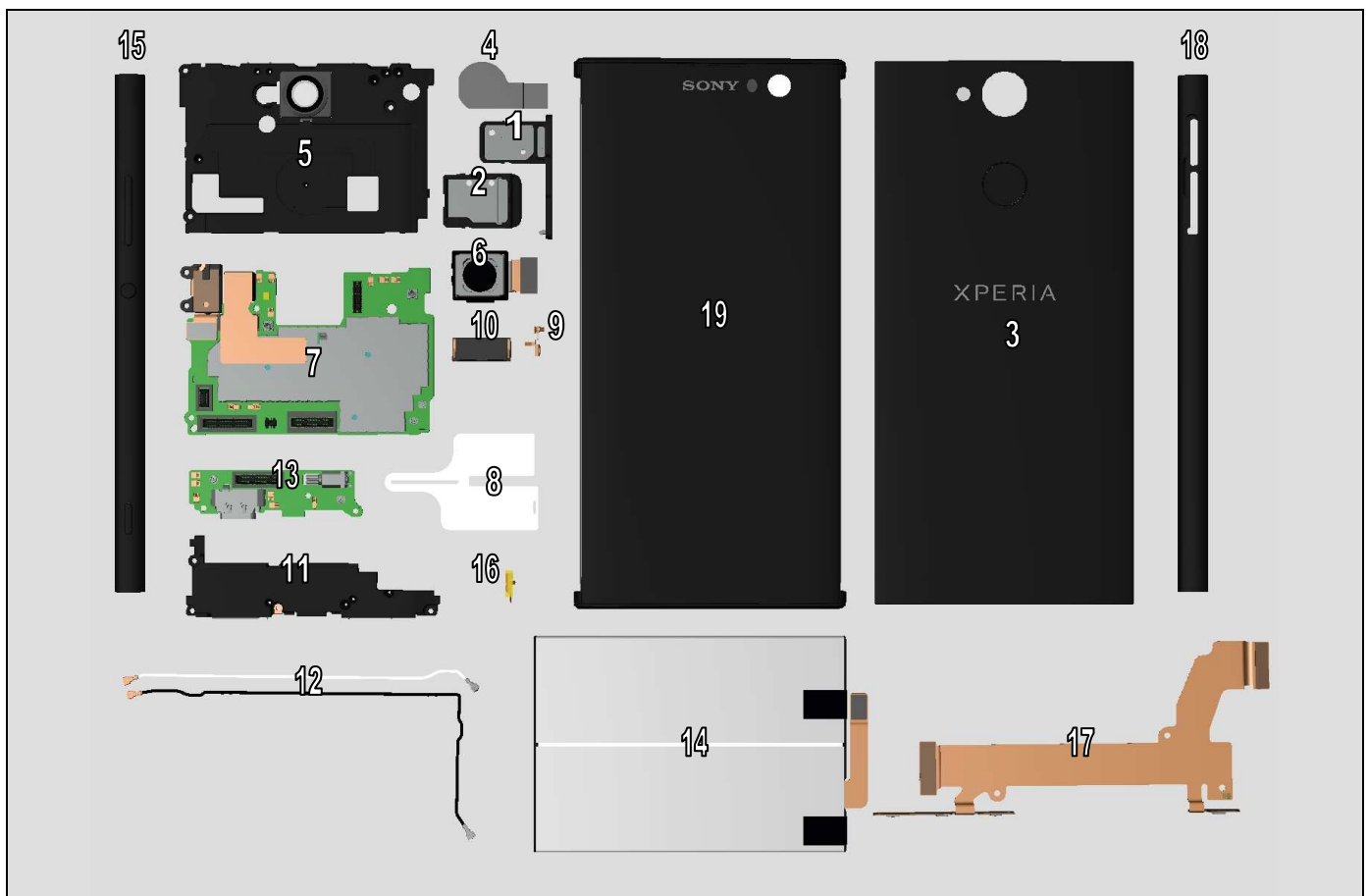
Parts that is required to replace in addition to target replacement parts.

Number in the cells indicates parts
require replacing for target part.

4 Disassembly

The H3113,H3123,H3133,H4113,H4133 disassembly is done in the following order:

1. Cap Tray SIM
2. SD Tray or SD/SIM Tray
3. Battery Cover Assy and FP Module Assy
4. Conductive Tape Sub Antenna
5. Sub Antenna
6. Main Camera
7. Main PBA
8. CU Label Tray
9. Bracket Main Camera
10. Ear Speaker and Adhesive Ear Speaker
11. Main Antenna Speaker Box
12. RF Cable White and RF Cable Black
13. Sub PBA Assy
14. Battery and Adhesive Battery
15. Side Panel Keys and Keys
16. Film Bracket Main Antenna and Bracket Main Antenna
17. Sidekey FPC Assy
18. Side Panel SIM/SD
19. Display Cover Assy



Disassembly

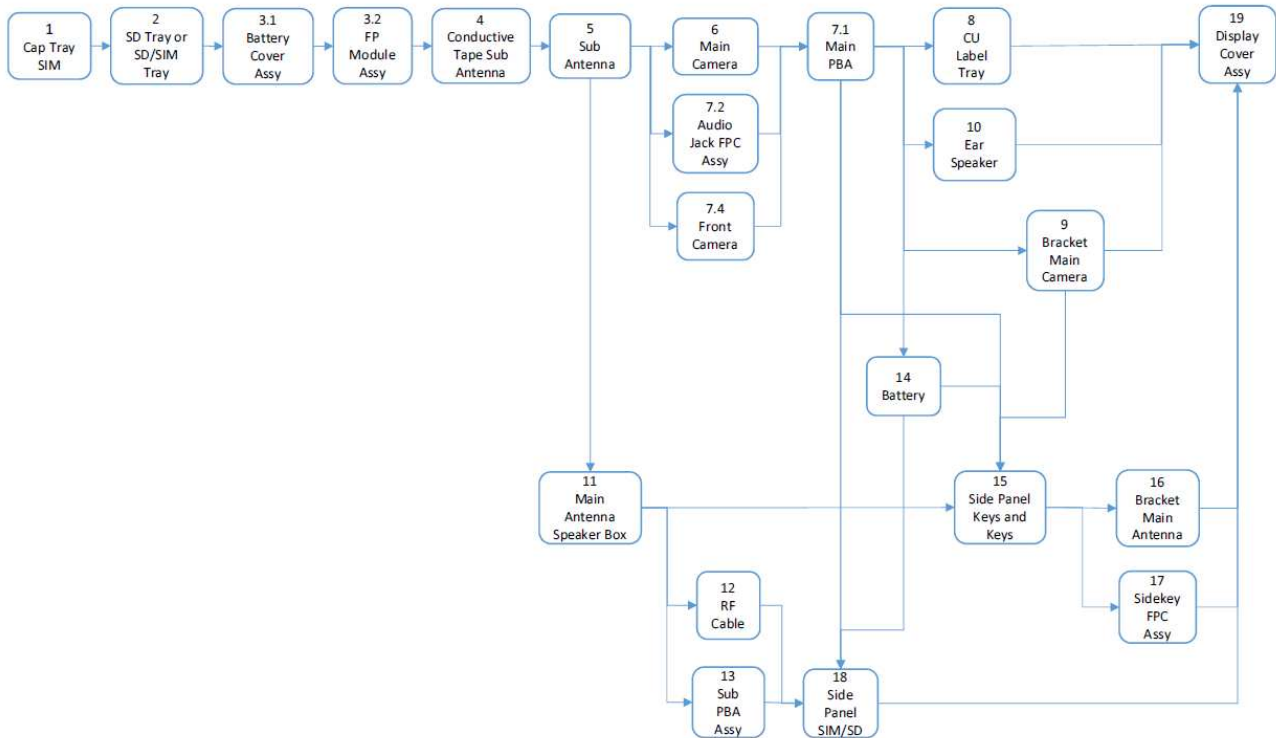
Disassembly Quick Reference Chart is embedded.



Disassembly
Procedure.pdf

Required disassembly procedures of specific part removing can be identified by Disassembly Quick Reference Chart.

The sequence numbers of the target parts in the chart correspond to the disassembly chapter numbers. Please refer to corresponding chapter content for the parts not mentioned in this chart.

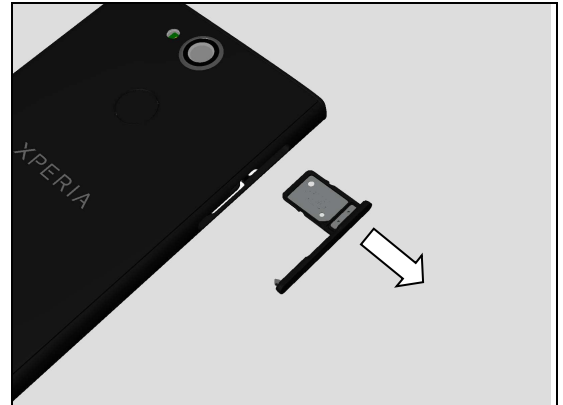


Replacement Target		Disassembly Procedure
1	Cap Tray SIM	1
2	SD Tray or SD/SIM Tray	1, 2
3.1	Battery Cover Assy	1, 2, 3.1
3.2	FP Module Assy	1, 2, 3.1, 3.2
4	Conductive Tape Sub Antenna	1, 2, 3.1, 3.2, 4
5	Sub Antenna	1, 2, 3.1, 3.2, 4, 5
6	Main Camera	1, 2, 3.1, 3.2, 4, 5, 6
7.1	Main PBA	1, 2, 3.1, 3.2, 4, 5, 6, 7.2, 7.4, 7.1
7.2	Audio Jack FPC Assy	1, 2, 3.1, 3.2, 4, 5, 7.2
7.4	Front Camera	1, 2, 3.1, 3.2, 4, 5, 7.4
8	CU Label Tray	1, 2, 3.1, 3.2, 4, 5, 6, 7.2, 7.4, 7.1, 8
9	Bracket Main Camera	1, 2, 3.1, 3.2, 4, 5, 6, 7.2, 7.4, 7.1, 9
10	Ear Speaker	1, 2, 3.1, 3.2, 4, 5, 6, 7.2, 7.4, 7.1, 10
11	Main Antenna Speaker Box	1, 2, 3.1, 3.2, 4, 5, 11
12	RF Cable	1, 2, 3.1, 3.2, 4, 5, 11, 12
13	Sub PBA Assy	1, 2, 3.1, 3.2, 4, 5, 11, 13
14	Battery	1, 2, 3.1, 3.2, 4, 5, 6, 7.2, 7.4, 7.1, 14
15	Side Panel Keys and Keys	1, 2, 3.1, 3.2, 4, 5, 6, 7.2, 7.4, 7.1, 9, 11, 14, 15
16	Bracket Main Antenna	1, 2, 3.1, 3.2, 4, 5, 6, 7.2, 7.4, 7.1, 9, 11, 14, 15, 16
17	Sidekey FPC Assy	1, 2, 3.1, 3.2, 4, 5, 6, 7.2, 7.4, 7.1, 9, 11, 14, 15, 17
18	Side Panel SIM/SD	1, 2, 3.1, 3.2, 4, 5, 6, 7.2, 7.4, 7.1, 11, 12, 13, 14, 18
19	Display Cover Assy	1, 2, 3.1, 3.2, 4, 5, 6, 7.2, 7.4, 7.1, 8, 9, 10, 11, 12, 13, 14, 15, 16, 17, 18, 19

Disassembly

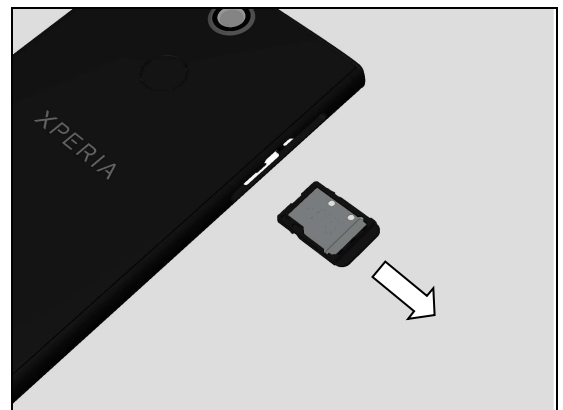
4.1 Cap Tray SIM

Remove the Cap Tray SIM with fingers.



4.2 SD Tray (H3113,H3123,H3133) or SD/SIM Tray (H4113,H4133)

Remove the SD Tray or SD/SIM Tray with fingers.



4.3 Battery Cover Assy and FP Module Assy

4.3.1 Battery Cover Assy

Note! Heating this area of the Battery Cover Assy by using Hot Air Gun, temperature 70 degree, distance 1cm, time about 1 minute.

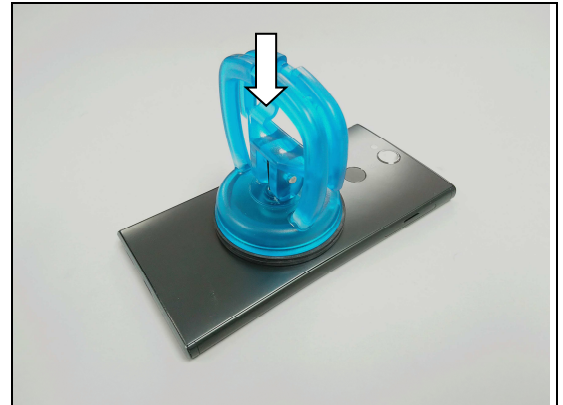


The area to be heated on the Battery Cover Assy as shown in picture.



Disassembly

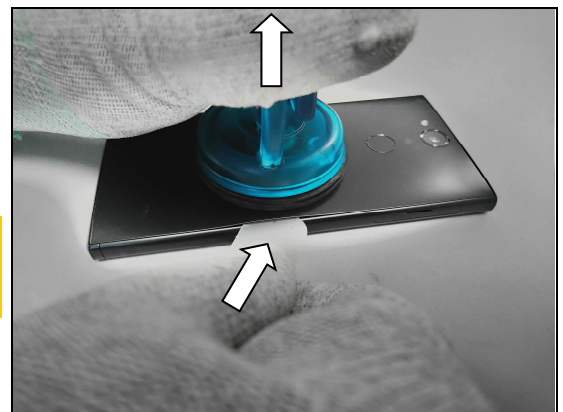
Apply the Suction Cup onto the Battery Cover Assy as shown in picture.



Pull the Suction Cup to get space for inserting the Flexible Disassembly tool.

Then insert Flexible Disassembly tool.

Do not use Guitar Pick! Because the Flexible Disassembly tool is much thinner than the Guitar Pick and easier for inserting.

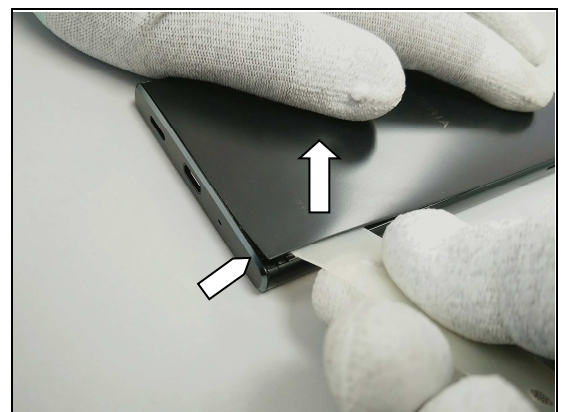


Slide the Flexible Disassembly tool to cut the Adhesive Battery Cover Left.

Insert the Flexible Disassembly tool just to cut the adhesive. Do not insert Flexible Disassembly tool too much deep!



Unsnap this corner hook as shown in picture.



Disassembly

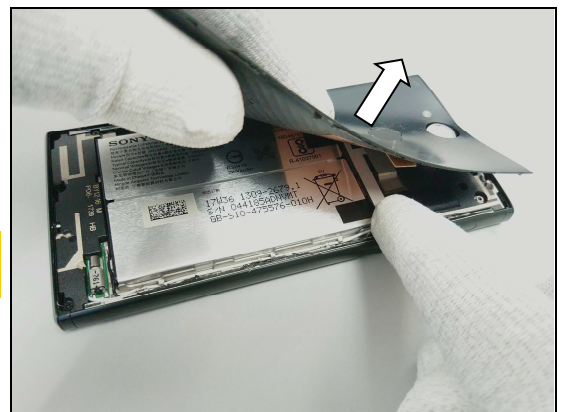
Hold the Battery Cover Assy as shown in picture to slowly detach the Adhesive Battery Cover Bottom area.

Note! During this action the Battery Cover Assy may deform to some extent, if not damaged it can be reused.



Hold the Battery Cover Assy and press the Sub Antenna as shown in picture to slowly detach the Adhesive NFC_B and Adhesive Battery Cover Top area.

Note! During this action the Battery Cover Assy may deform to some extent, if not damaged it can be reused.



Use the eraser end of a pencil to press the finger print sensor area as shown in picture.



Then hold the Battery Cover Assy as shown in picture to slowly detach the FP Module Assy.

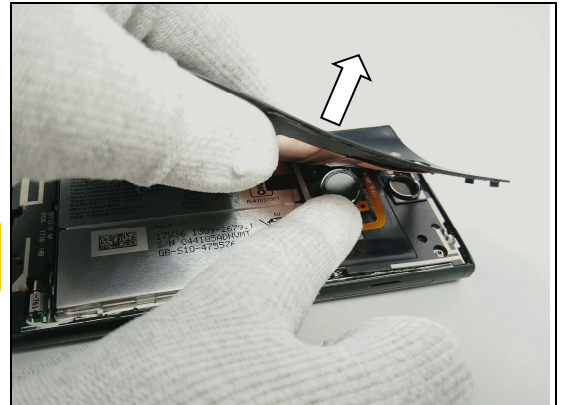
Note! During this action the Battery Cover Assy may deform to some extent, if not damaged it can be reused.



Disassembly

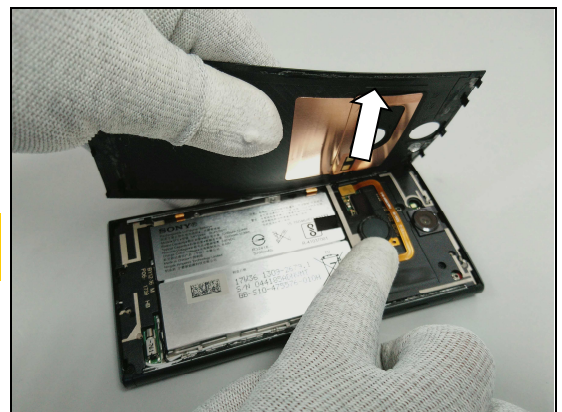
Hold the Battery Cover Assy and press the FP Module Assy as shown in picture to slowly detach the Adhesive NFC_A and Adhesive Battery Cover Top area.

Note! During this action the Battery Cover Assy may deform to some extent, if not damaged it can be reused.



Hold the Battery Cover Assy as shown in picture to slowly detach the Adhesive Battery Cover Right area.

Note! During this action the Battery Cover Assy may deform to some extent, if not damaged it can be reused.

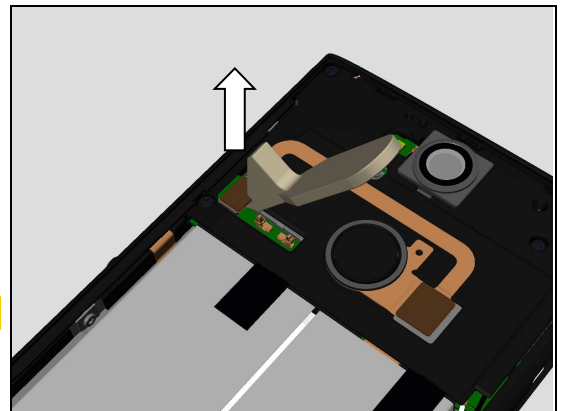


4.3.2 FP Module Assy

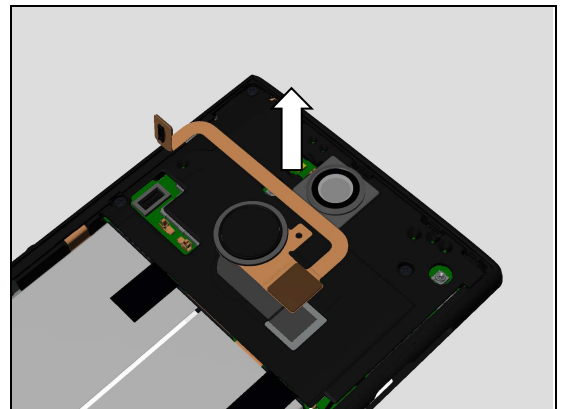
4.3.2.1 FP Module Assy

Disconnect the FP Module Assy BtB connector by using the Front Opening Tool.

Do not damage components on the Main PBA!



Remove the FP Module Assy.



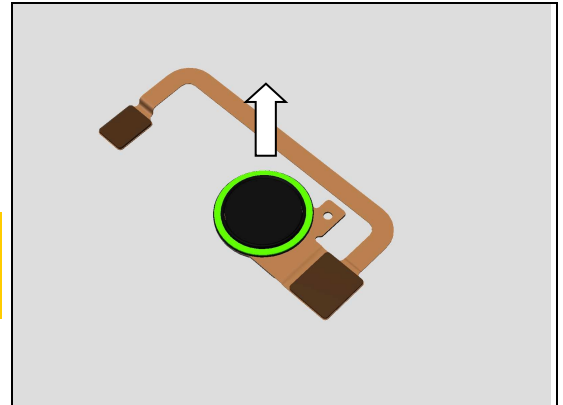
Disassembly

4.3.2.2 Adhesive FP Module

Detach the Adhesive FP Module.

Scrap! Not to be reuse!

Make sure all remaining adhesive residues have been removed!

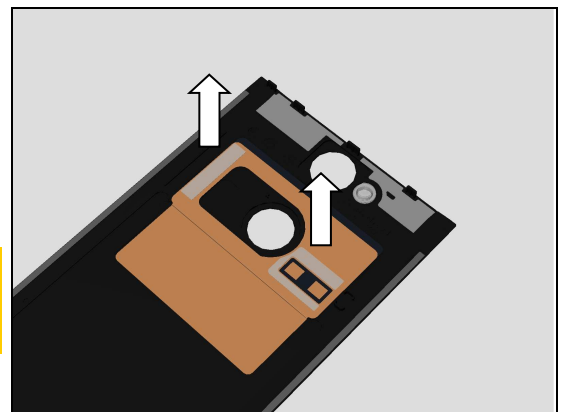


4.3.3 Adhesive NFC_A and Adhesive NFC_B

Detach the Adhesive NFC_A and Adhesive NFC_B.

Scrap! Not to be reuse!

Make sure all remaining adhesive residue have been removed!

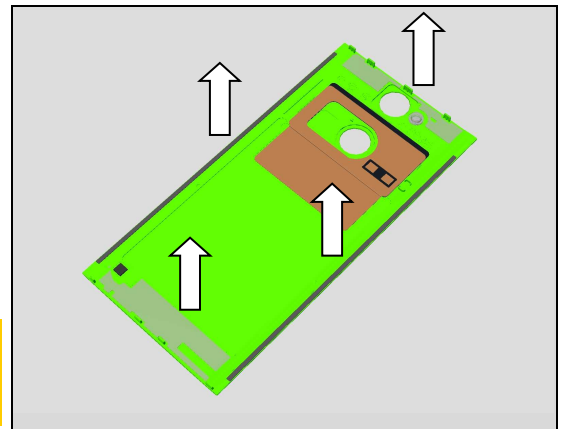


4.3.4 Adhesive Battery Cover Top, Adhesive Battery Cover Bottom, Adhesive Battery Cover Left and Adhesive Battery Cover Right

Detach the Adhesive Battery Cover Top, Adhesive Battery Cover Bottom, Adhesive Battery Cover Left and Adhesive Battery Cover Right.

Scrap! Not to be reuse!

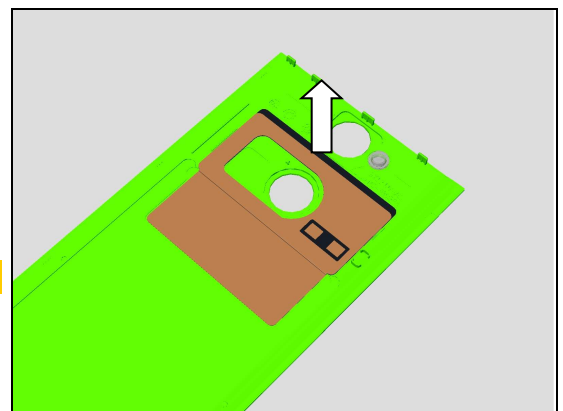
Make sure all remaining adhesive residue have been removed!



4.3.5 Copper Foil Battery Cover

Detach the Copper Foil Battery Cover.

Scrap! Not to be reuse!

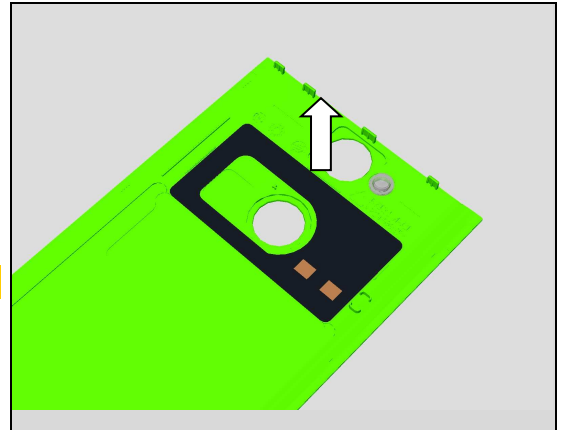


Disassembly

4.3.6 NFC Antenna

Detach the NFC Antenna.

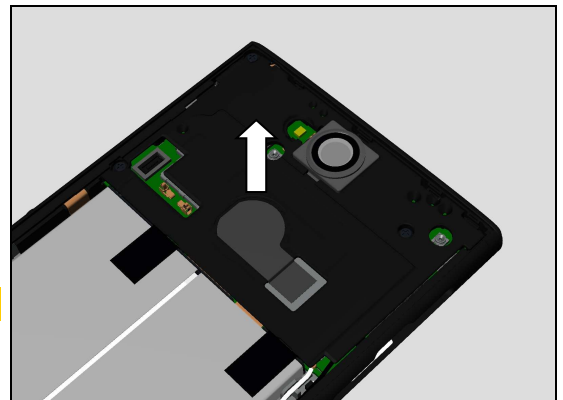
Scrap! Not to be reuse!



4.4 Conductive Tape Sub Antenna

Detach the Conductive Tape Sub Antenna.

Scrap! Not to be reuse!

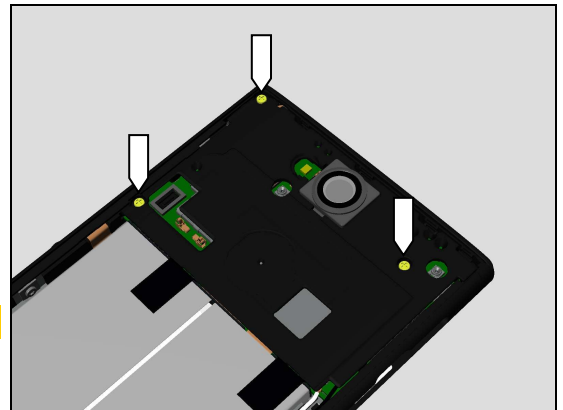


4.5 Sub Antenna

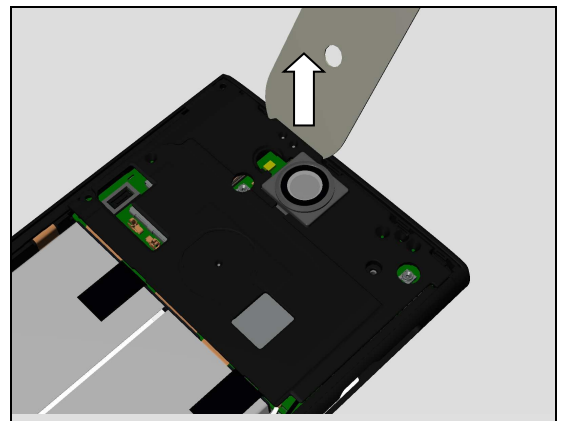
4.5.1 Sub Antenna

Remove the three Screw Cross M1.2 L2.62 by using a screwdriver with Bits JCIS No.0.

Scrap! Not to be reused!

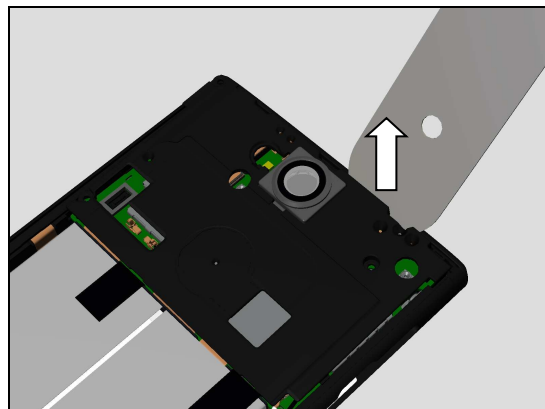


Release the Sub Antenna and Main Camera Lens Assy firstly from this position by using Flexible Disassembly tool as shown in picture.

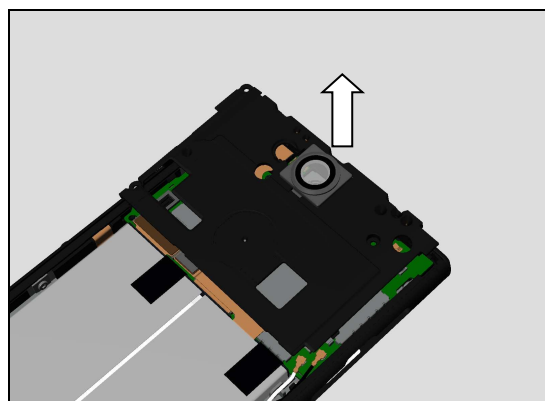


Disassembly

Then release the Sub Antenna and Main Camera Lens Assy from this position by using Flexible Disassembly tool as shown in picture.

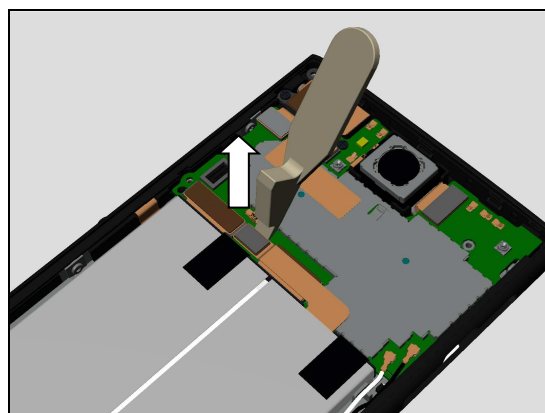


Remove the Sub Antenna and Main Camera Lens Assy.



Disconnect the Battery connector by using the Front Opening Tool.

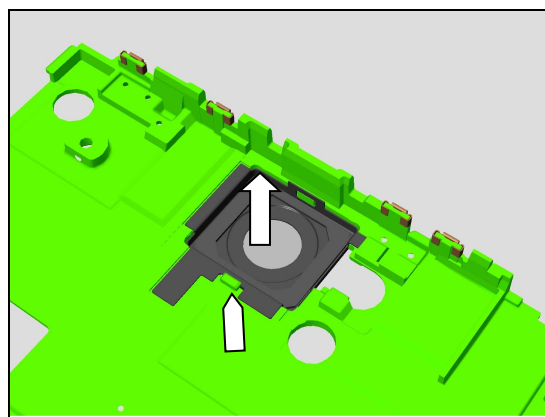
Do not damage components on the Main PBA!



4.5.2 Main Camera Lens Assy

Deform the Sub Antenna a little to release this hook by fingers.

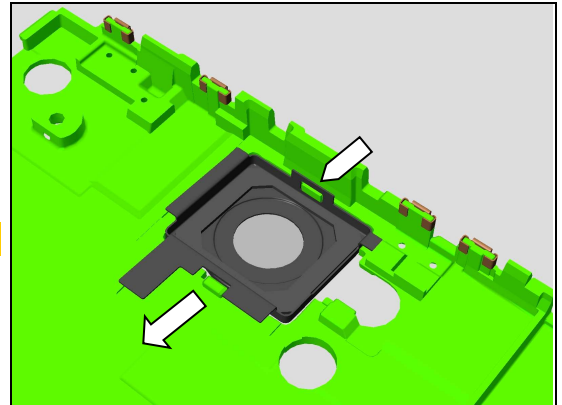
Be careful! Do not damage the hook.



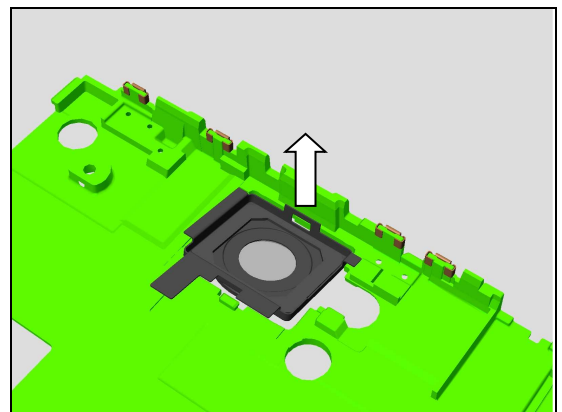
Disassembly

Release the Main Camera Lens Assy from this small rib by fingers as shown in picture.

Be careful! Do not damage the small rib.



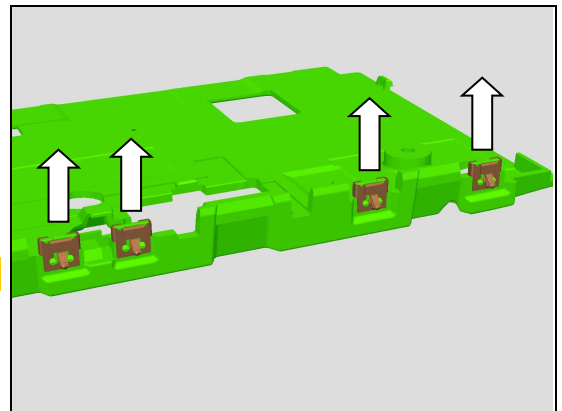
Remove the Main Camera Lens Assy.



4.5.3 Spring Antenna

Release the four Spring Antenna and remove them.

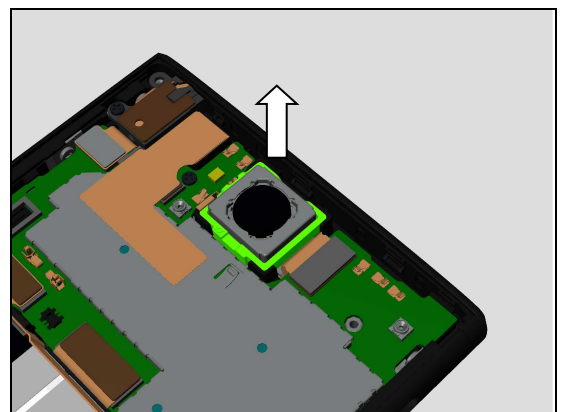
Scrap if the Spring Antenna deformed after removal.



4.6 Main Camera

4.6.1 Rubber Main Camera

Remove the Rubber Main Camera.



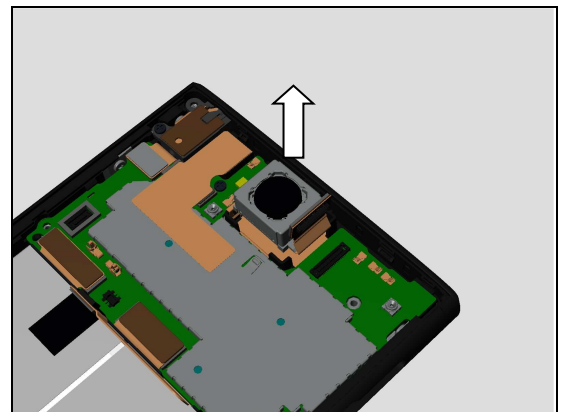
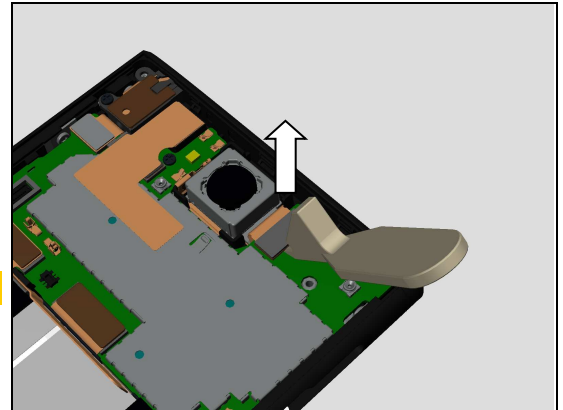
Disassembly

4.6.2 Main Camera

Disconnect the Main Camera BtB connector by using the Front Opening Tool.

Do not damage components on the Main PBA!

Remove the Main Camera.

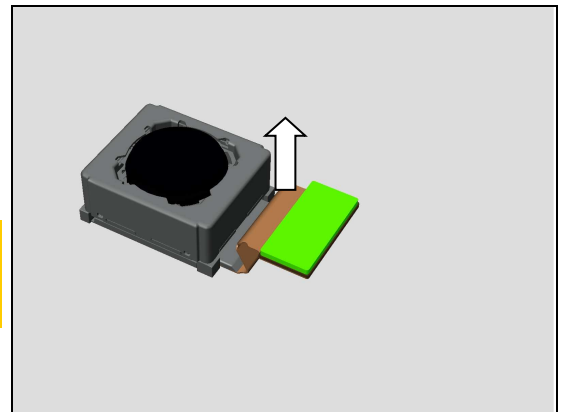


4.6.3 Sponge Main Camera BtB Conn

Detach the Sponge Main Camera BtB Conn.

Scrap! Not to be reuse!

Make sure all remaining adhesive residue have been removed!

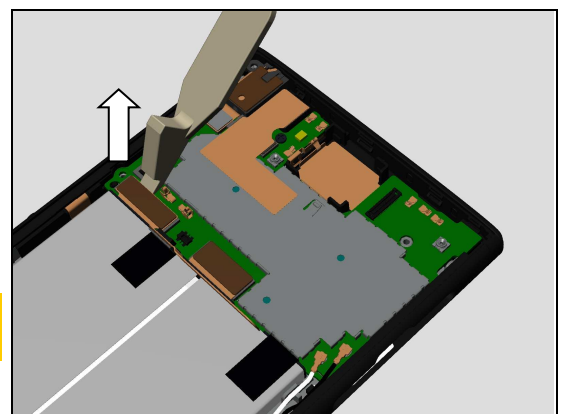


4.7 Main PBA

4.7.1 Main PBA

Disconnect the Sidekey FPC Assy BtB connector by using the Front Opening Tool.

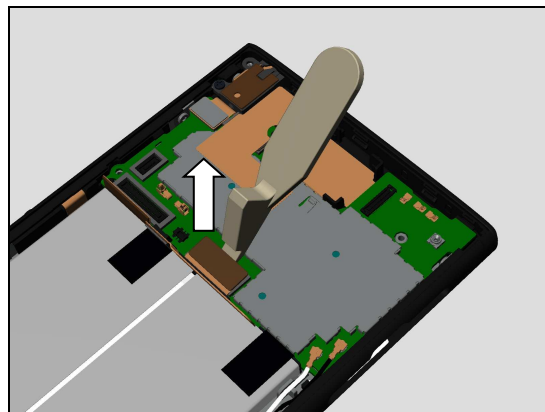
Be careful! Do not damage the NFC contact spring and other components on the Main PBA!



Disassembly

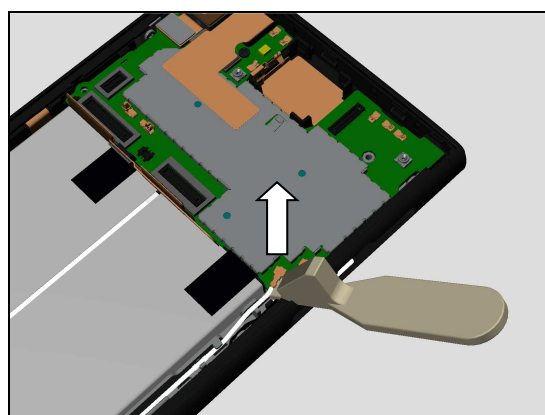
Disconnect the Display FPC BtB connector by using the Front Opening Tool.

Do not damage components on the Main PBA!



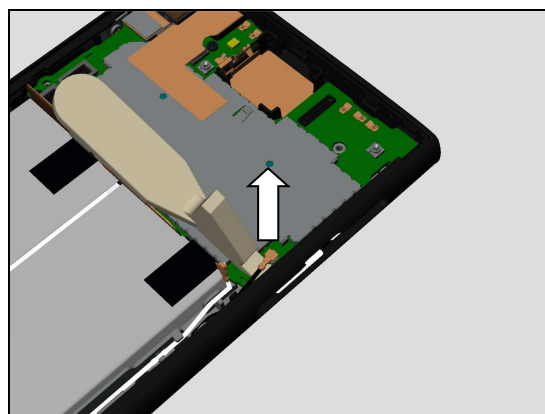
Disconnect the RF Cable White connector by using the Front Opening Tool.

Do not damage components on the Main PBA!



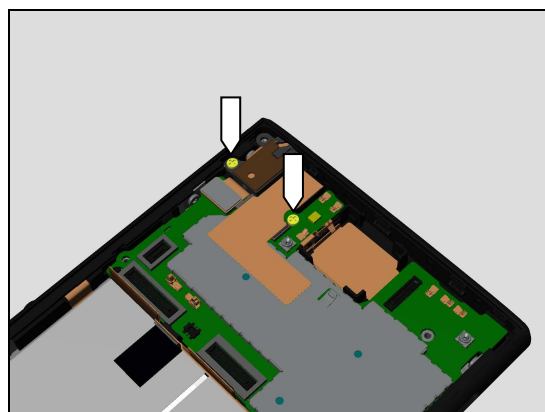
Disconnect the RF Cable Black connector by using the Front Opening Tool.

Do not damage components on the Main PBA!



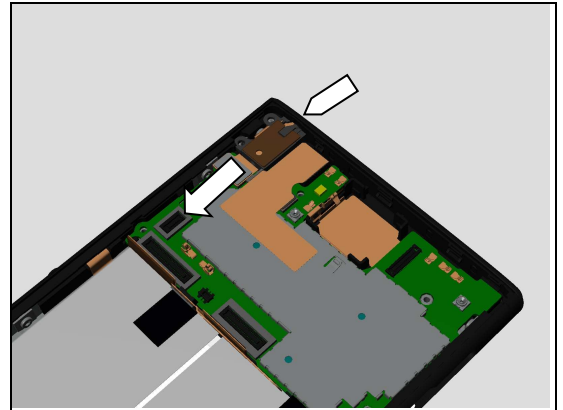
Remove the two Screw Cross M1.2 L2.62 by using a screwdriver with Bits JCIS No.0.

Scrap! Not to be reused!

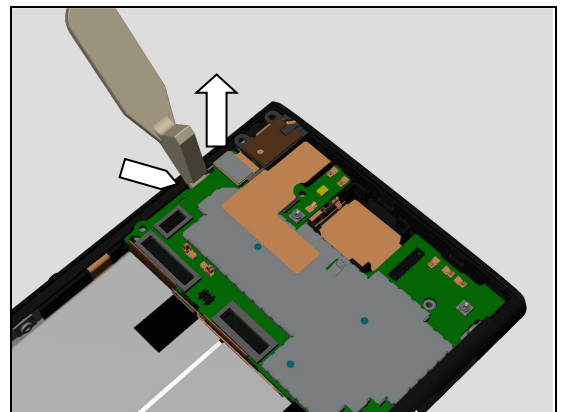


Disassembly

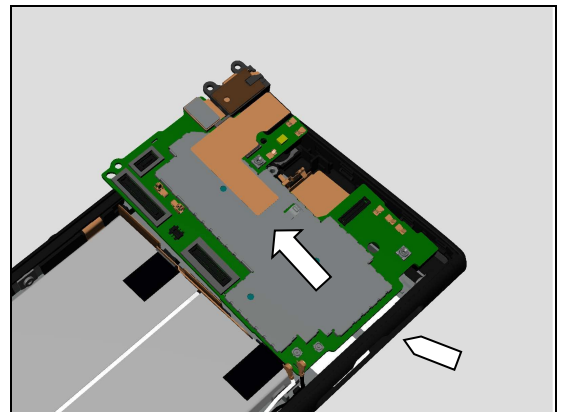
Release Audio Jack FPC Assy from its hole as shown in picture.



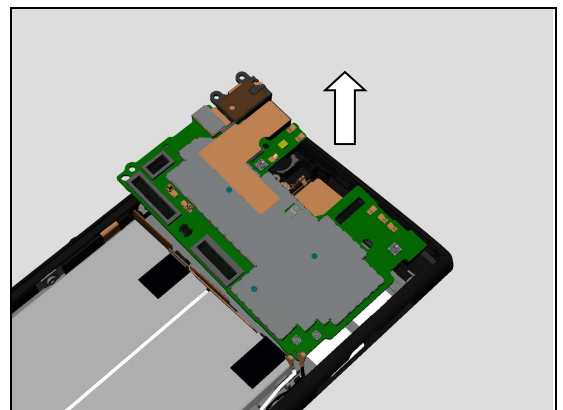
Release the Main PBA from this position by using the Front Opening Tool.



Release the Main PBA from SIM/SD hole as shown in picture.



Remove the Main PBA.



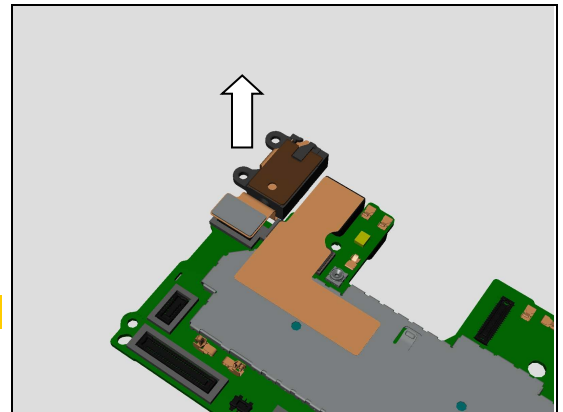
Disassembly

4.7.2 Audio Jack FPC Assy

4.7.2.1 Audio Jack FPC Assy

Disconnect the Audio Jack FPC Assy BtB connector and remove the Audio Jack FPC Assy.

Do not damage components on the Main PBA!



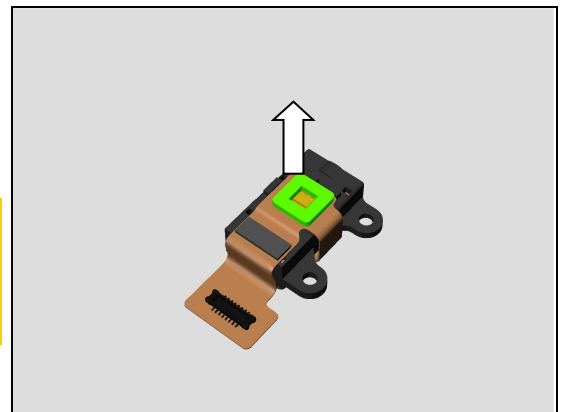
4.7.2.2 Sponge Notification LED

Detach the Sponge Notification LED.

Scrap! Not to be reuse!

Make sure all remaining adhesive residue have been removed!

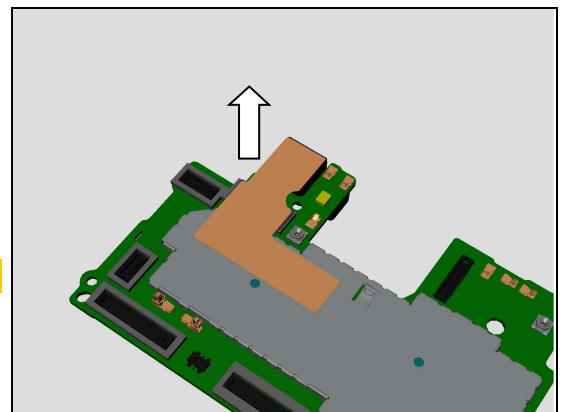
Be careful! Do not damage the notification LED.



4.7.3 Copper Foil Front Camera

Detach the Copper Foil Front Camera.

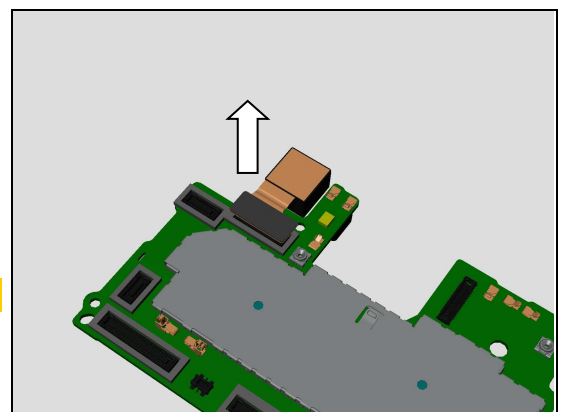
Scrap! Not to be reused!



4.7.4 Front Camera

Disconnect the Front Camera BtB connector and remove the Front Camera.

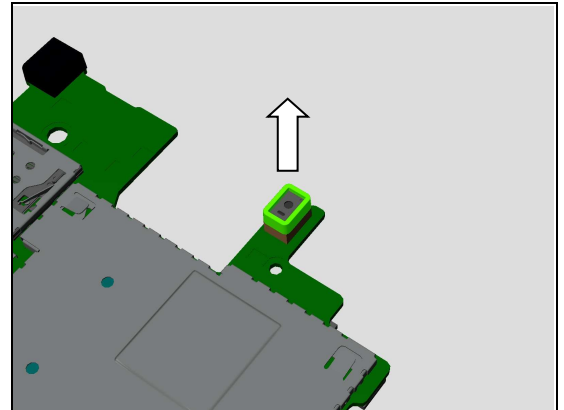
Do not damage components on the Main PBA!



Disassembly

4.7.5 Rubber PL Sensor

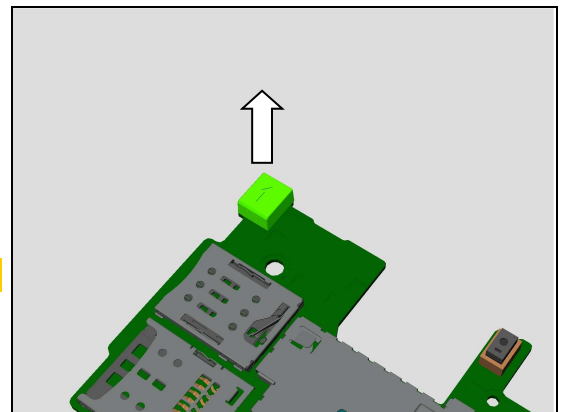
Remove the Rubber PL Sensor.



4.7.6 Rubber 2nd MIC

Detach the Rubber 2nd MIC.

Scrap! Not to be reused!



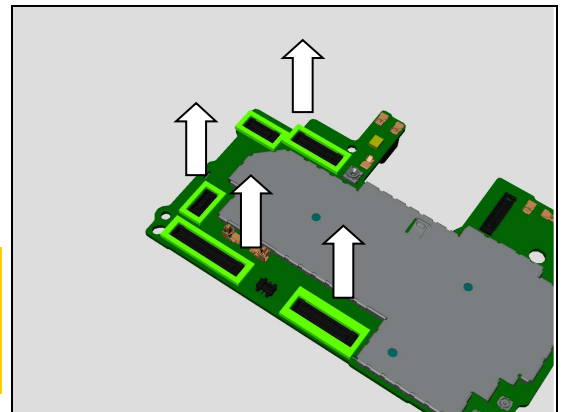
4.7.7 Gasket BtB FP Module, Gasket BTB Front Cam&AJ, Gasket BTB LCM and Gasket BTB Sidekey FPC

Detach these Gasket BTB.

Scrap! Not to be reused!

Do not damage components on the Main PBA!

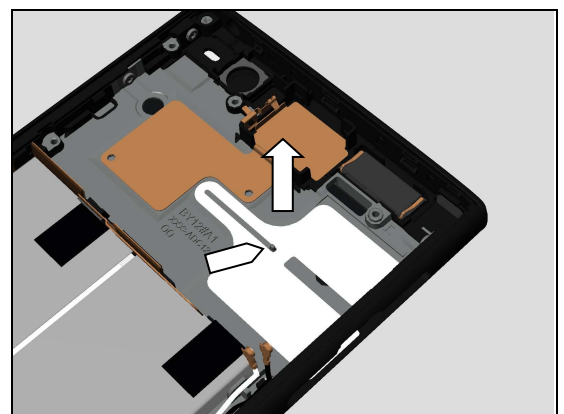
Make sure all remaining adhesive residue have been removed!



4.8 CU Label Tray

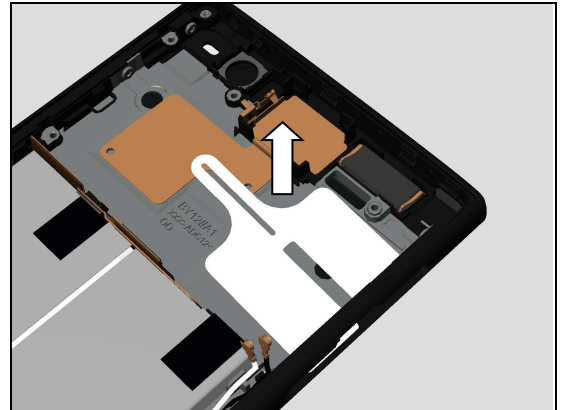
4.8.1 CU Label Tray

Release the CU Label Tray from its position pin.



Disassembly

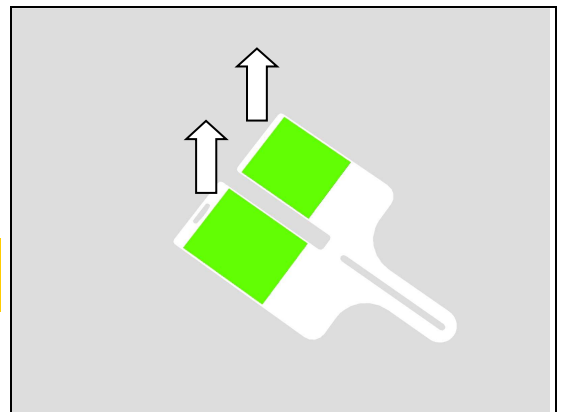
Remove the CU Label Tray.



4.8.2 CU Label

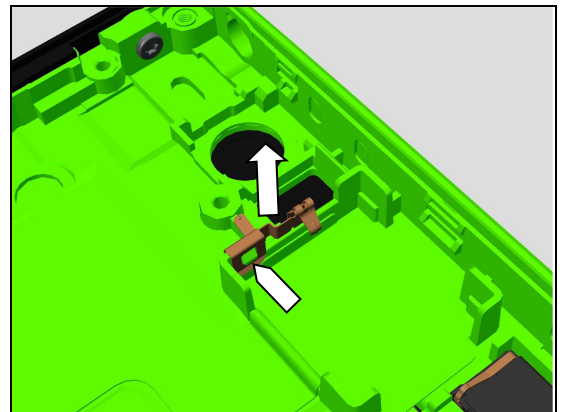
Detach the CU Label.

Scrap! Not to be reused!
Do not damage the CU Label Tray!



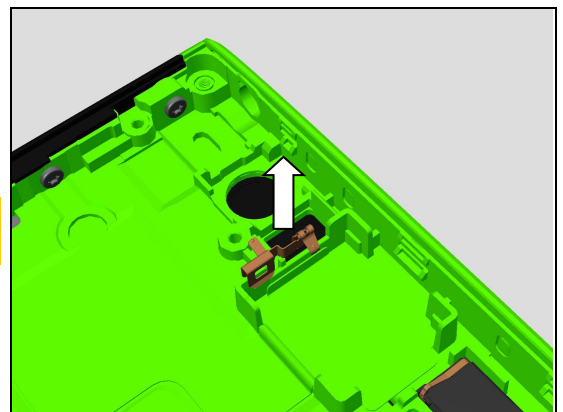
4.9 Bracket Main Camera

Release the Bracket Main Camera this hook by using the plastic tweezers as shown in picture.



Remove the Bracket Main Camera.

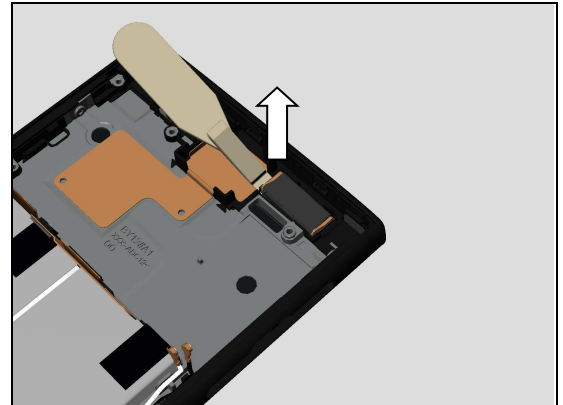
Scrap if the Bracket Main Camera deform after disassembly!



Disassembly

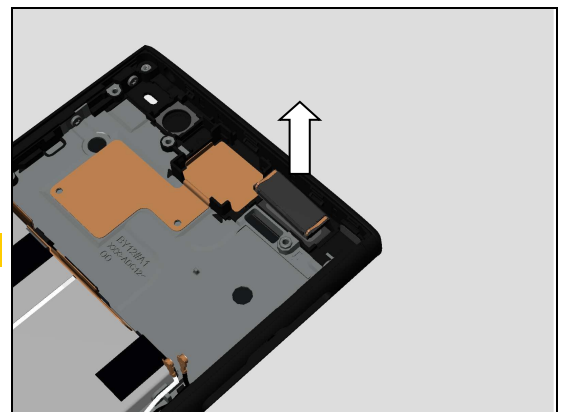
4.10 Ear Speaker and Adhesive Ear Speaker

Detach the Ear Speaker by using the Front Opening Tool.



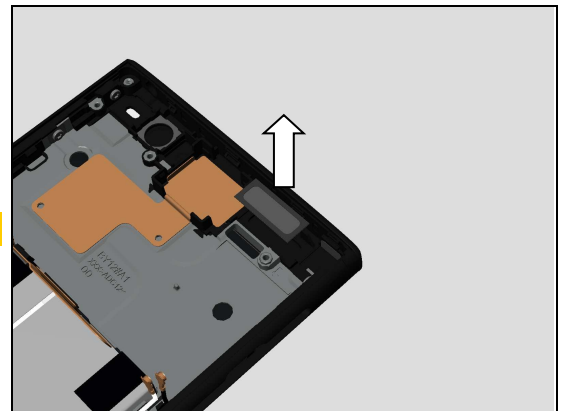
Remove the Ear Speaker.

Scrap! Not to be reused!



Detach the Adhesive Ear Speaker by using plastic tweezers.

Scrap! Not to be reused!

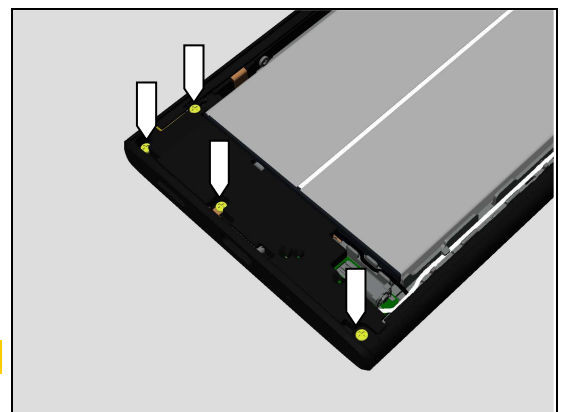


4.11 Main Antenna Speaker Box

4.11.1 Main Antenna Speaker Box

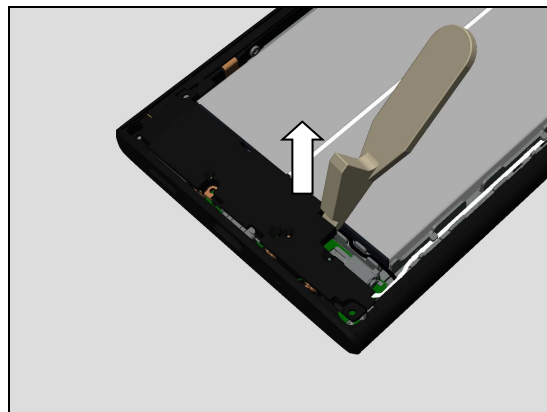
Remove the four Screw Cross M1.2 L2.62 by using a screwdriver with Bits JCIS No.0.

Scrap! Not to be reused!

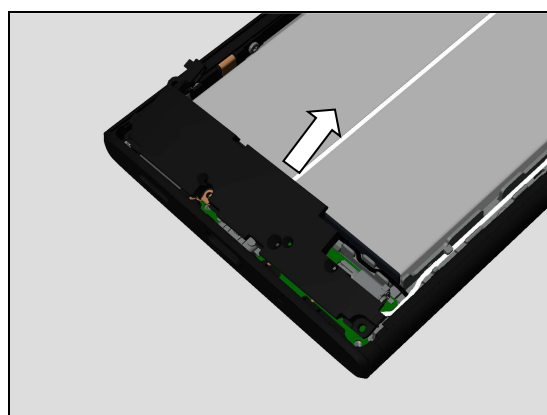


Disassembly

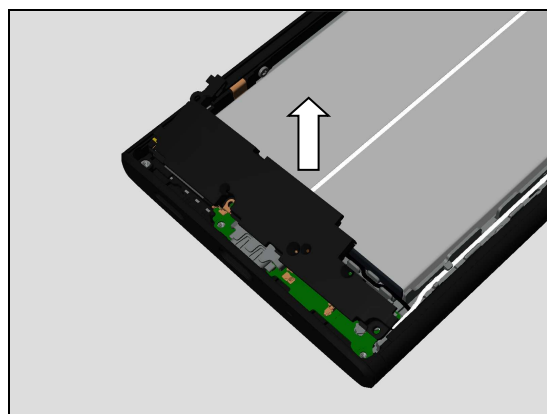
Unsnap the Main Antenna Speaker Box from this position by using the Front opening tool as shown in picture.



Release the Main Antenna Speaker Box as shown in picture.



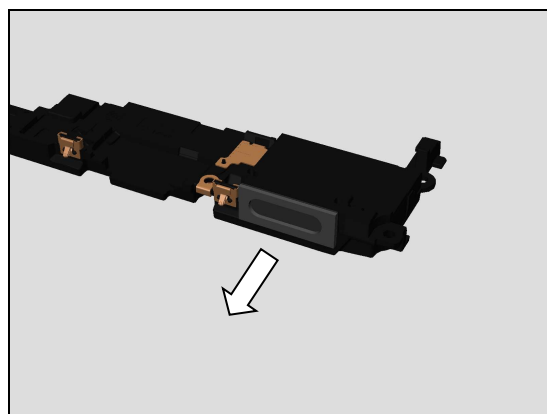
Remove the Main Antenna Speaker Box.



4.11.2 Speaker Sponge

Detach the Speaker Sponge by using the plastic tweezers.

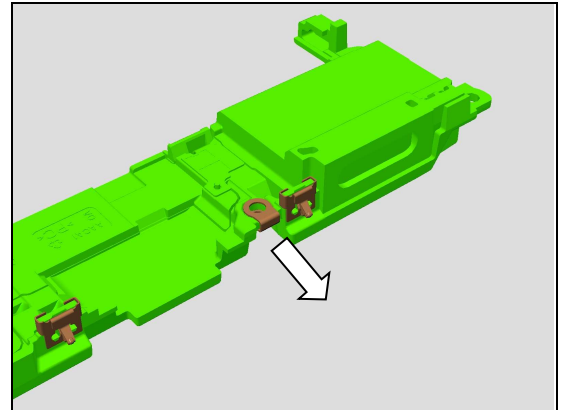
Scrap! Not to be reused!



Disassembly

4.11.3 Contact Clip Speaker Box

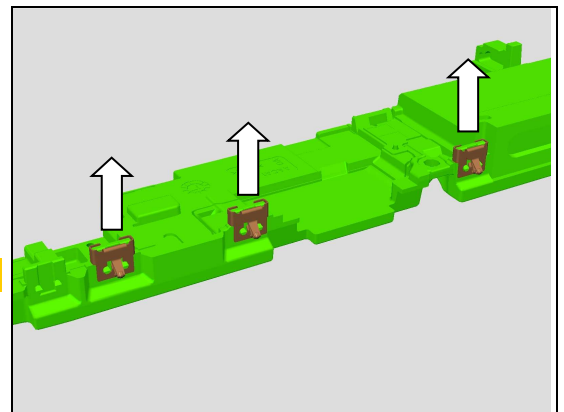
Remove the Contact Clip Speaker Box.



4.11.4 Spring Antenna

Release the three Spring Antenna and remove them.

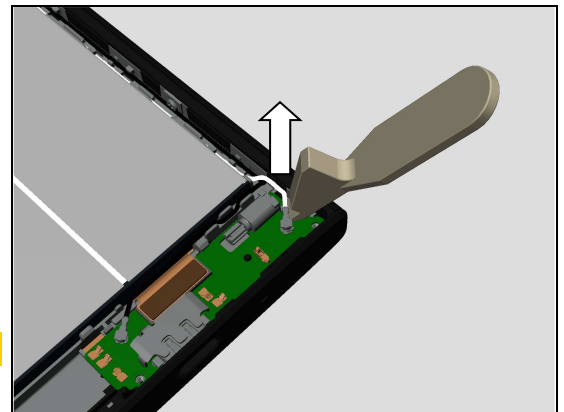
Scrap if the Spring Antenna deformed after removal.



4.12 RF Cable White and RF Cable Black

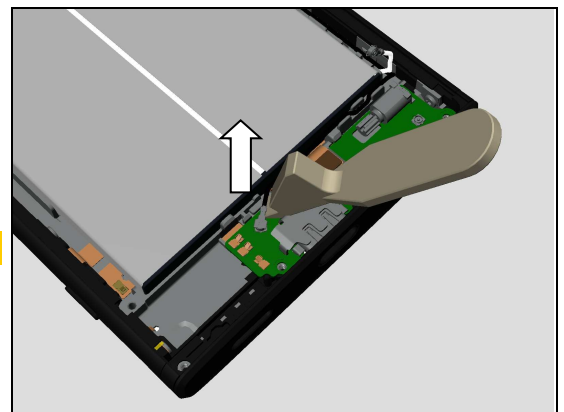
Disconnect the RF Cable White connector by using the Front opening tool.

Do not damage components on the Sub PBA!



Disconnect the RF Cable Black connector by using the Front opening tool.

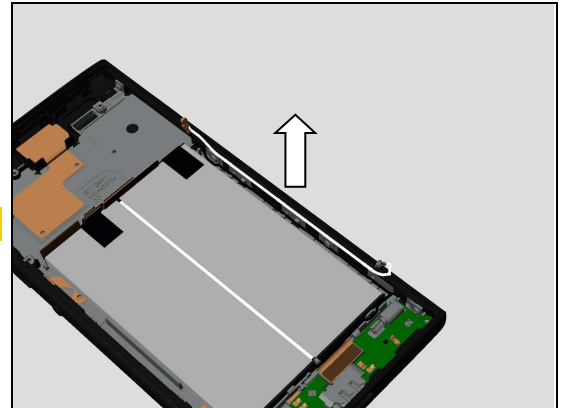
Do not damage components on the Sub PBA!



Disassembly

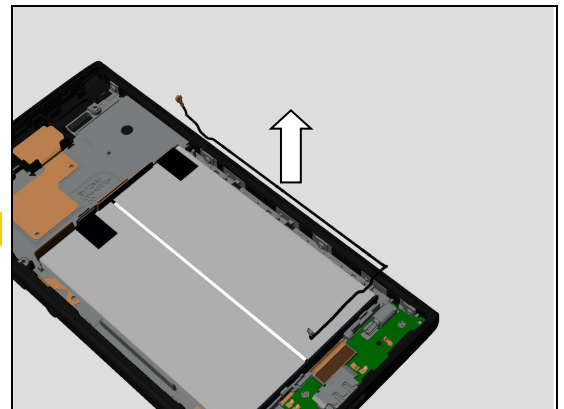
Remove the RF Cable White.

Do not damage the RF Cable White when release!



Remove the RF Cable Black.

Do not damage the RF Cable Black when release!

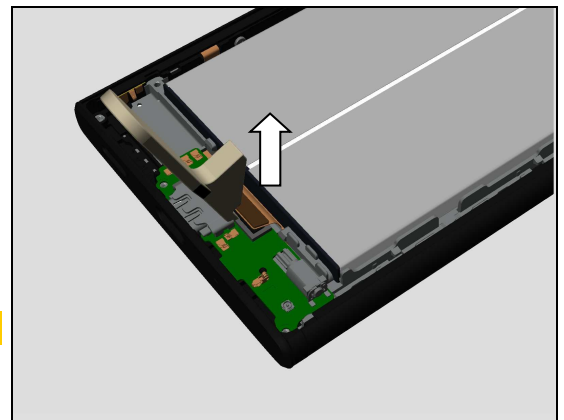


4.13 Sub PBA Assy

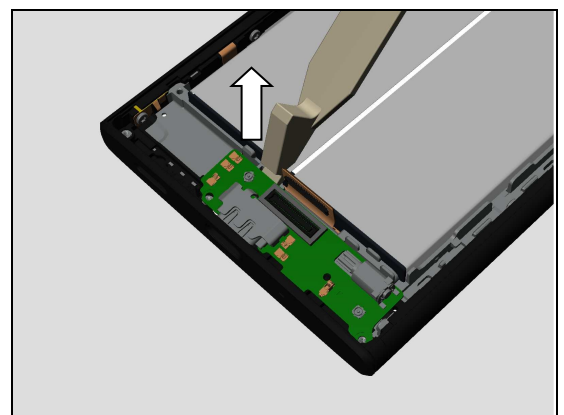
4.13.1 Sub PBA Assy

Disconnect the Sidekey FPC Assy BtB connector by using the Front Opening Tool.

Do not damage components on the Sub PBA!

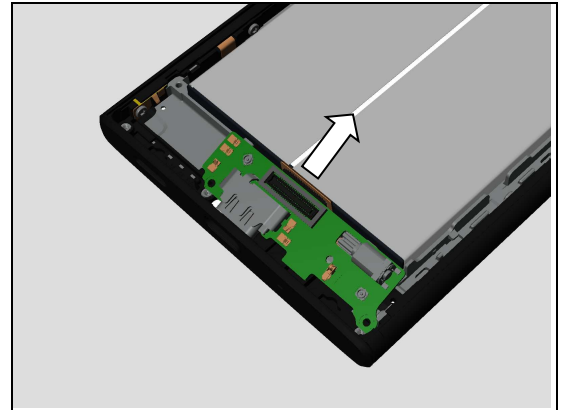


Release the Sub PBA Assy from this position by using the Front Opening Tool.

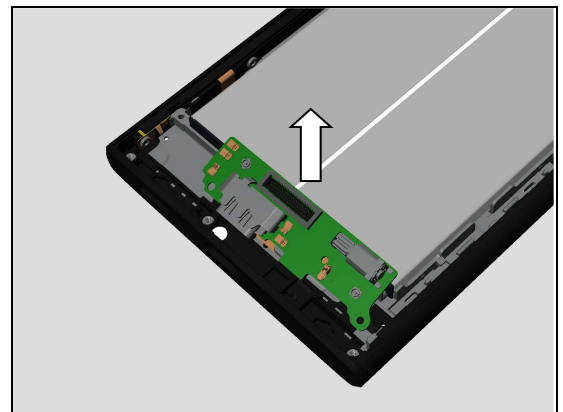


Disassembly

Release the Sub PBA Assy from USB hole.



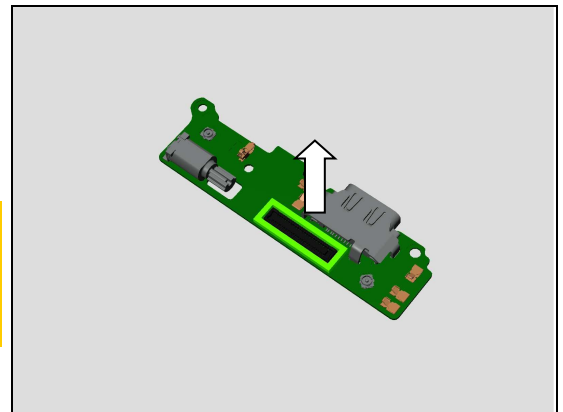
Remove the Sub PBA Assy.



4.13.2 Gasket BTB Sub PBA

Detach the Gasket BTB Sub PBA.

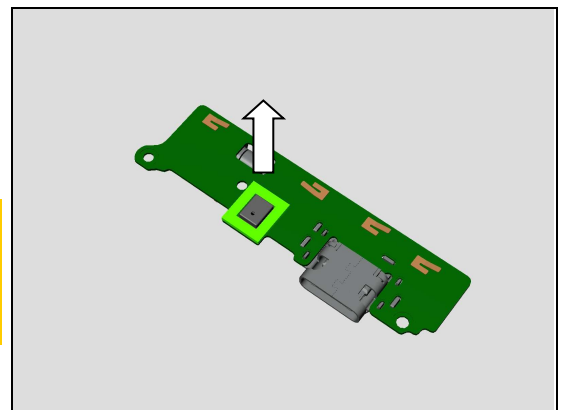
Scrap! Not to be reused!
Do not damage components on the Sub PBA Assy!
Make sure all remaining adhesive residue have been removed!



4.13.3 Sponge 1st Mic

Detach Sponge 1st Mic.

Scrap! Not to be reused!
Do not damage components on the Sub PBA!
Make sure all remaining adhesive residue have been removed!



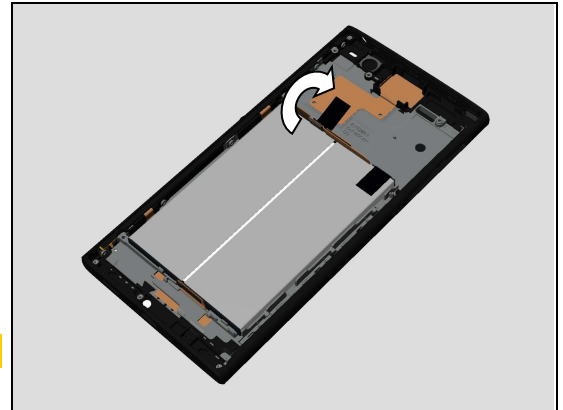
Disassembly

4.14 Battery and Adhesive Battery

4.14.1 Battery and Adhesive Battery

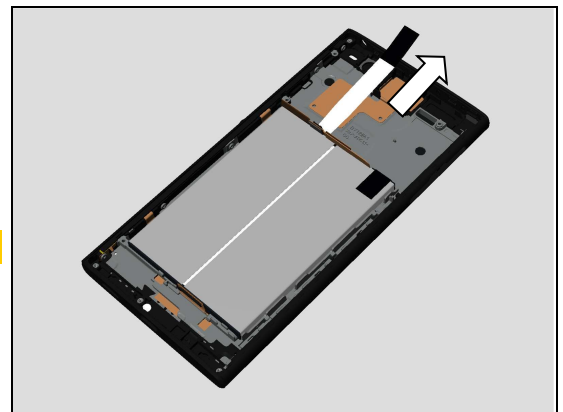
Slowly detach the tab of the Adhesive Battery Left as shown in picture.

Make sure not to damage the Battery!



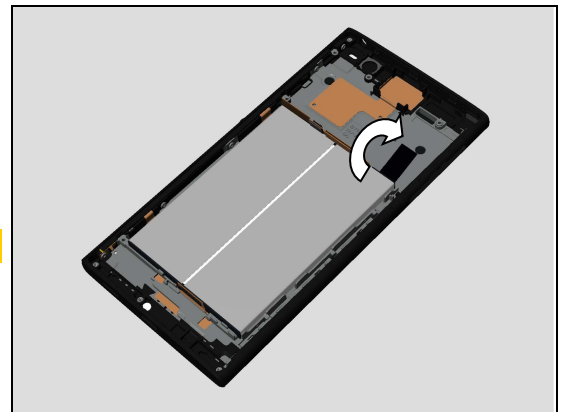
Slowly pull out the Adhesive Battery Left as shown in picture.

Scrap! Not to be reused!

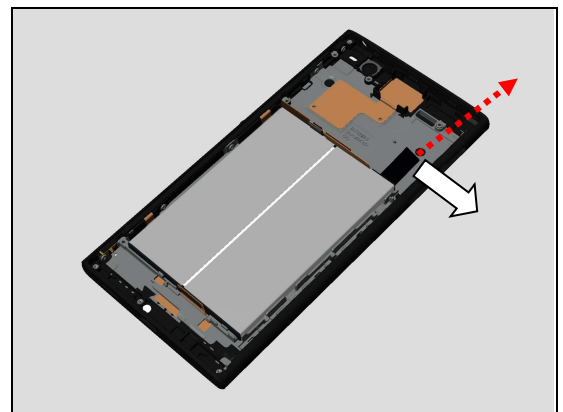


Slowly detach the tab of the Adhesive Battery Right as shown in picture.

Make sure not to damage the Battery!



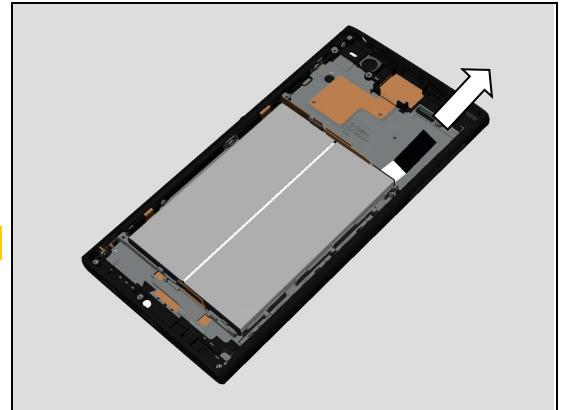
Shift the tab to this direction as shown in picture.



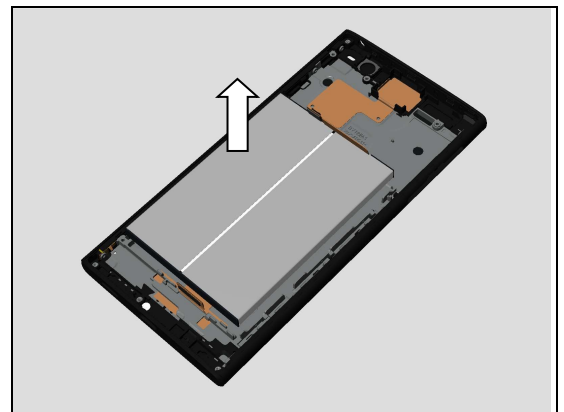
Disassembly

Slowly pull out the Adhesive Battery Right as shown in picture.

Scrap! Not to be reused!



Remove the Battery.

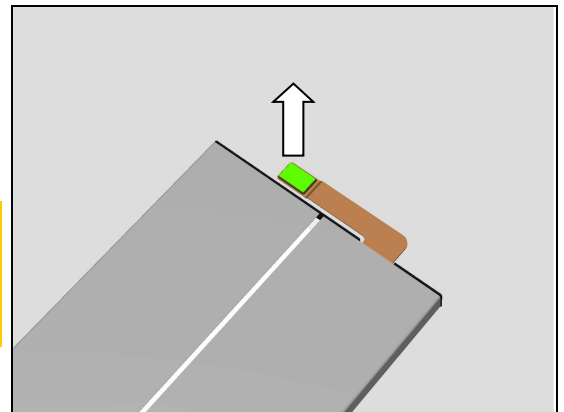


4.14.2 Sponge Battery Connector

Detach the Sponge Battery Connector.

Scrap! Not to be reused!

Do not damage the Battery BtB connector and FPC!
Make sure all remaining adhesive residue have been removed!

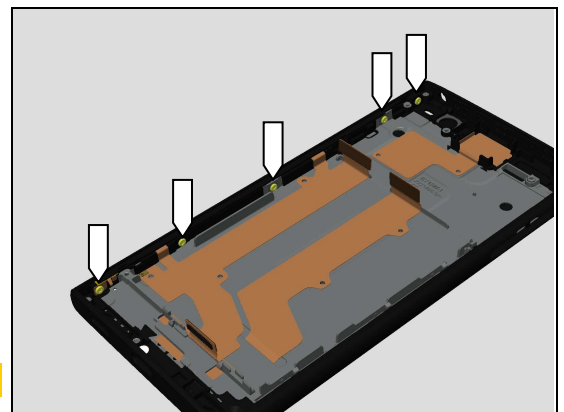


4.15 Side Panel Keys and Keys

4.15.1 Side Panel Keys and Adhesive LCM Keys Side

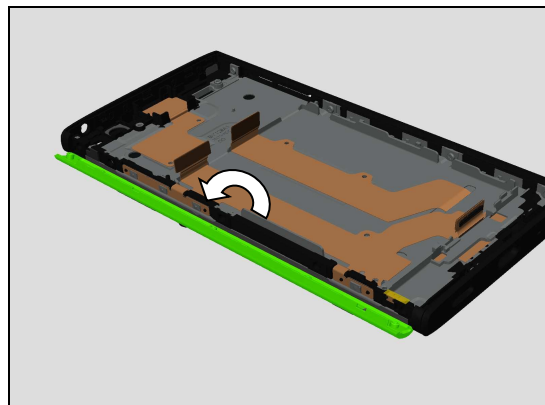
Remove the five Screw TORX M1.4 L2.5 Silver by using a T5 screwdriver.

Scrap! Not to be reused!

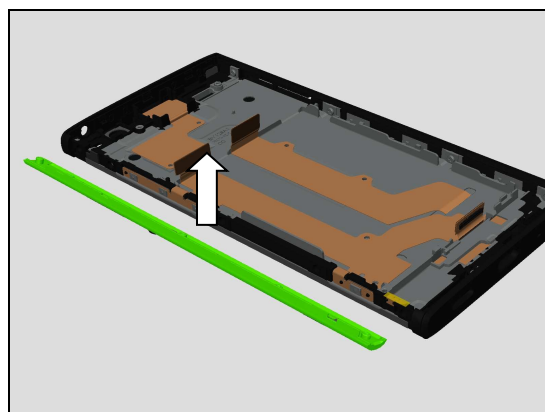


Disassembly

Detach the Side Panel Keys.

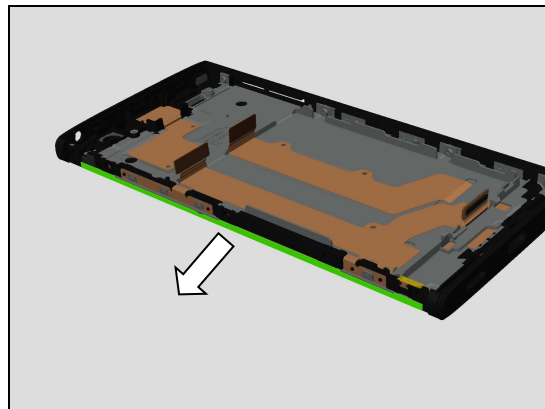


Remove the Side Panel Keys.



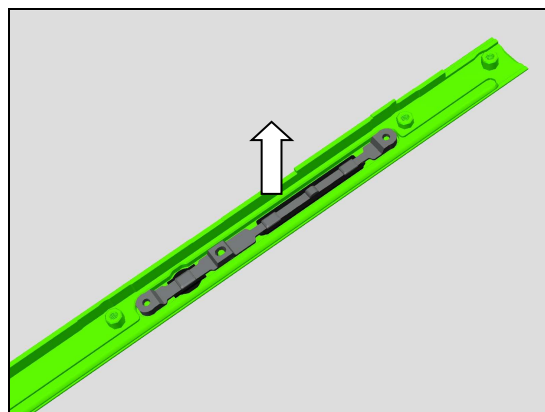
Detach the Adhesive LCM Keys Side.

Scrap! Not to be reused!



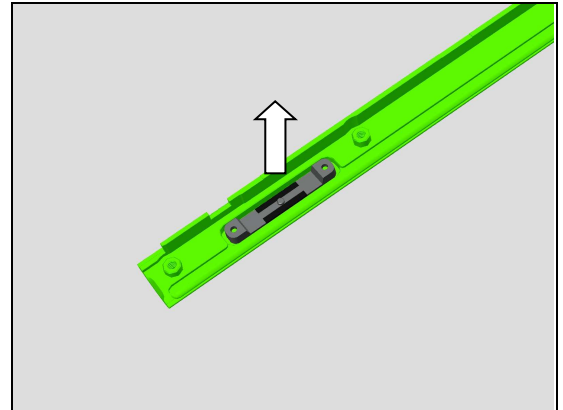
4.15.2 Key Power_Volume and Key Camera

Remove the Key Power_Volume.



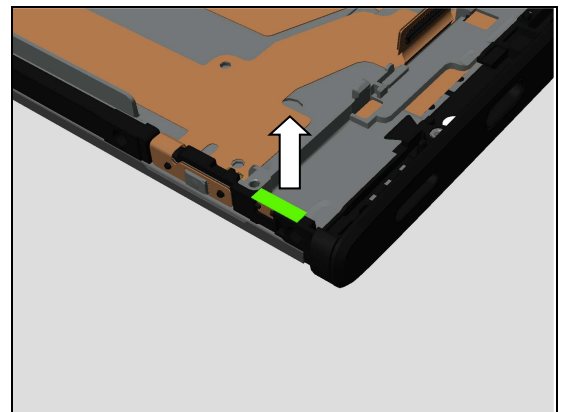
Disassembly

Remove the Key Camera.



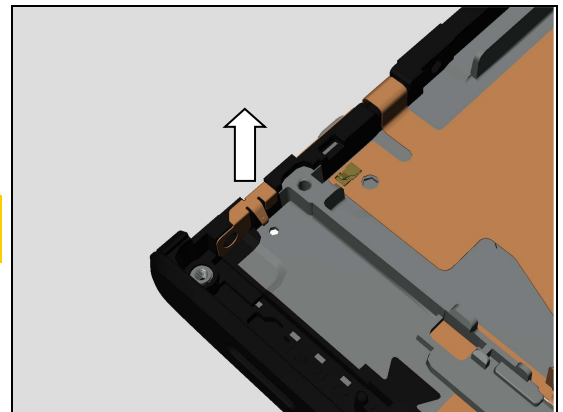
4.16 Film Bracket Main Antenna and Bracket Main Antenna

Detach the Film Bracket Main Antenna.



Release the Bracket Main Antenna.

Scrap if the Bracket Main Antenna deform after disassembly!

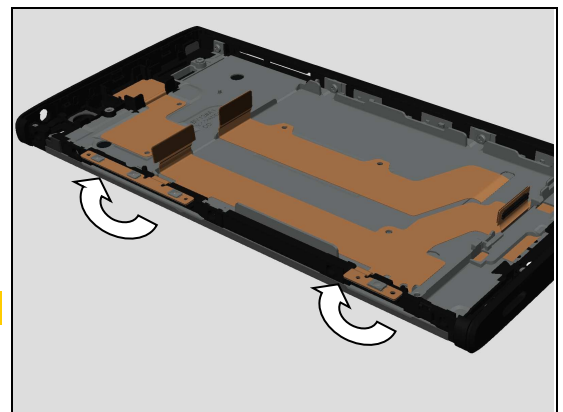


4.17 Sidekey FPC Assy

4.17.1 Sidekey FPC Assy

Detach the Power_Volume Key FPC and Camera Key FPC.

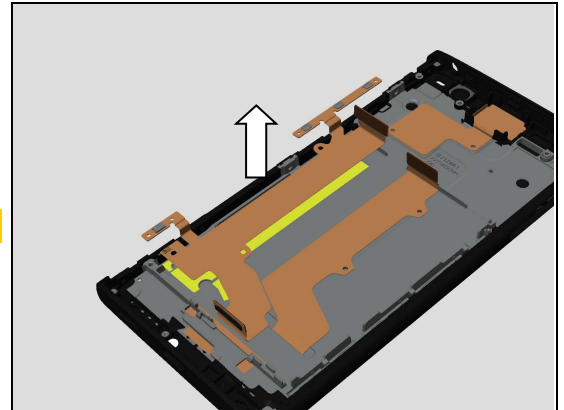
Do not damage the FPC!



Disassembly

Detach the Sidekey FPC Assy.

Do not damage the Sidekey FPC Assy!



4.17.2 Adhesive Sidekey FPC Main, Adhesive Side Key FPC_B and Adhesive Side Key FPC_C

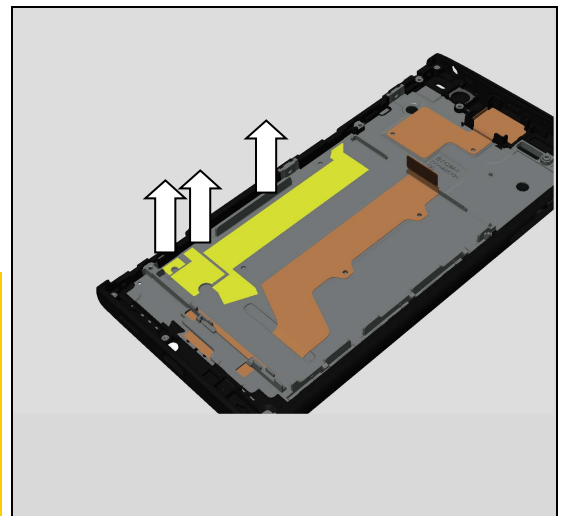
Detach the Adhesive Sidekey FPC Main, Adhesive Side Key FPC_B and Adhesive Side Key FPC_C.

Scrap! Not to be reused!

The adhesive residues may be left on both front cover and Sidekey FPC Assy.

Make sure all remaining adhesive residue have been removed!

Do not damage the Sidekey FPC Assy when cleaning the adhesive residues.

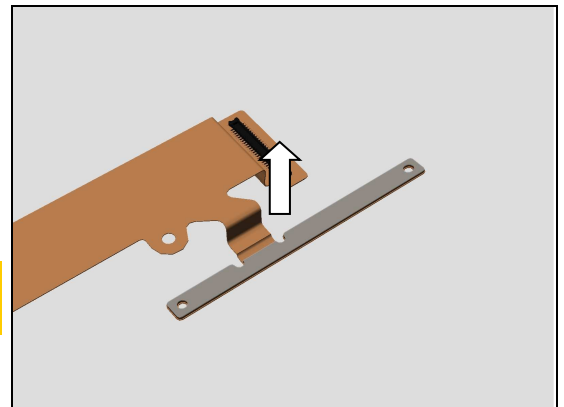


4.17.3 Adhesive Power_Volume Key FPC and Adhesive Camera Key FPC

Detach the Adhesive Power_Volume Key FPC.

Scrap! Not to be reused!

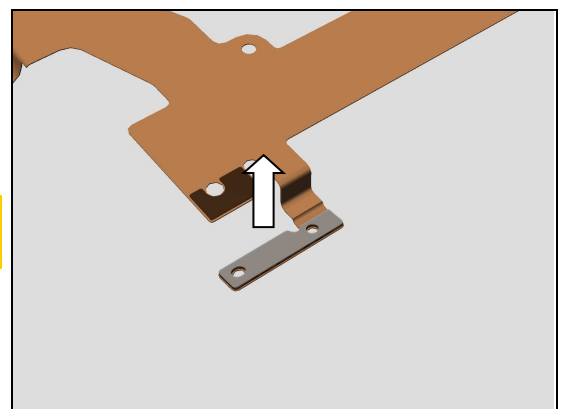
Do not damage FPC!



Detach the Adhesive Camera Key FPC.

Scrap! Not to be reused!

Do not damage FPC!



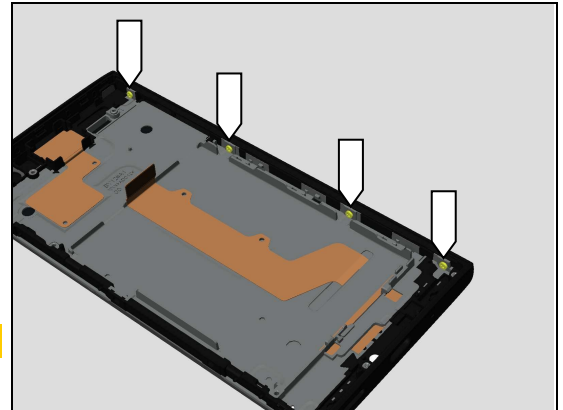
Disassembly

4.18 Side Panel SIM/SD

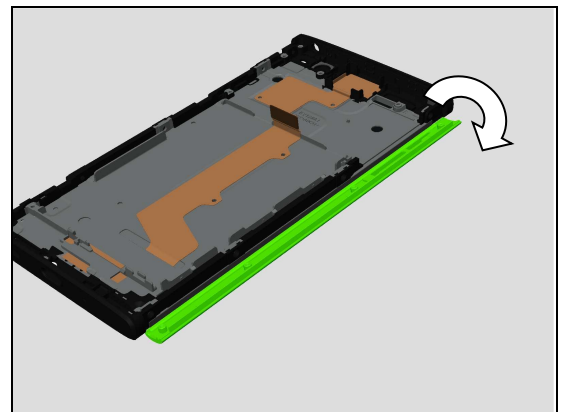
4.18.1 Side Panel SIM/SD

Remove the four Screw TORX M1.4 L2.5 Silver by using a T5 screwdriver.

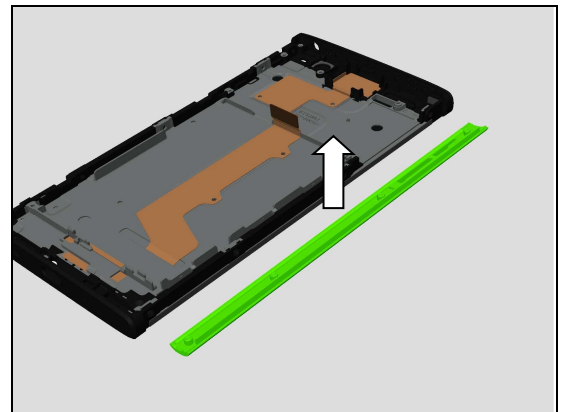
Scrap! Not to be reused!



Detach the Side Panel SIM/SD.



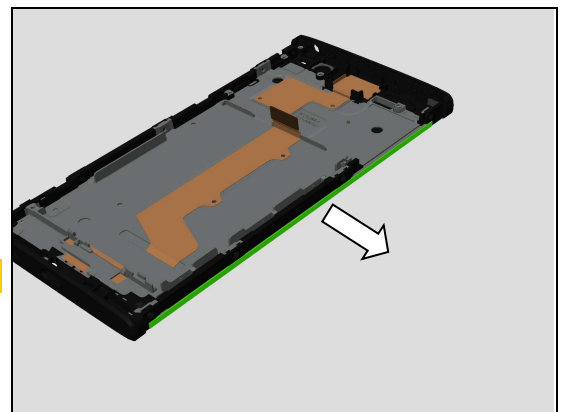
Remove the Side Panel SIM/SD.



4.18.2 Adhesive LCM SIM/SD Side

Detach the Adhesive LCM SIM/SD Side.

Scrap! Not to be reused!



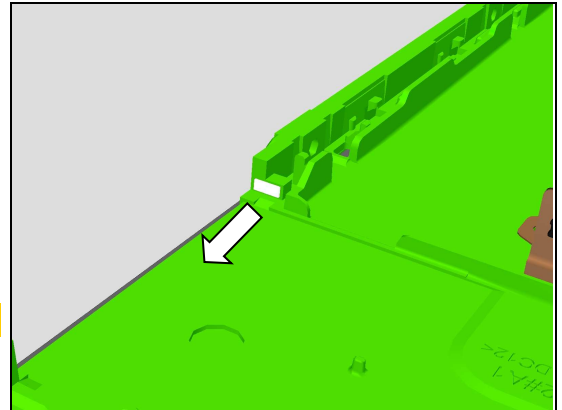
Disassembly

4.19 Display Cover Assy

4.19.1 Water Intrusion Label Rectangle

Detach the Water Intrusion Label Rectangle by using the plastic tweezers.

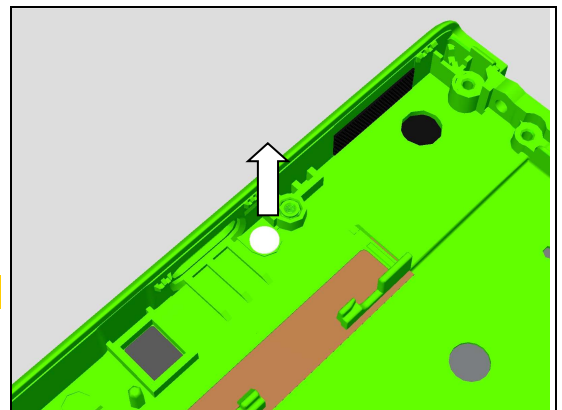
Scrap! Not to be reused!



4.19.2 Water Intrusion Label

Detach the Water Intrusion Label by using the plastic tweezers.

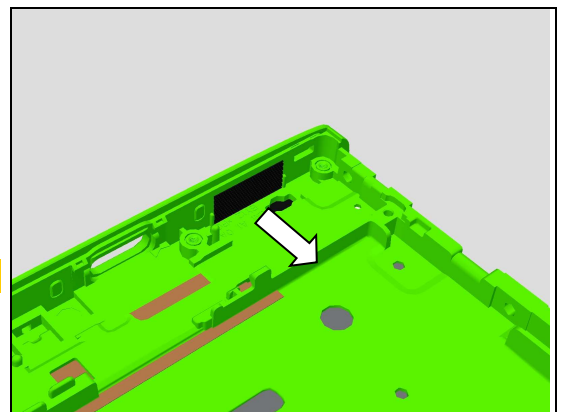
Scrap! Not to be reused!



4.19.3 Speaker Mesh

Detach the Speaker Mesh by using the plastic tweezers.

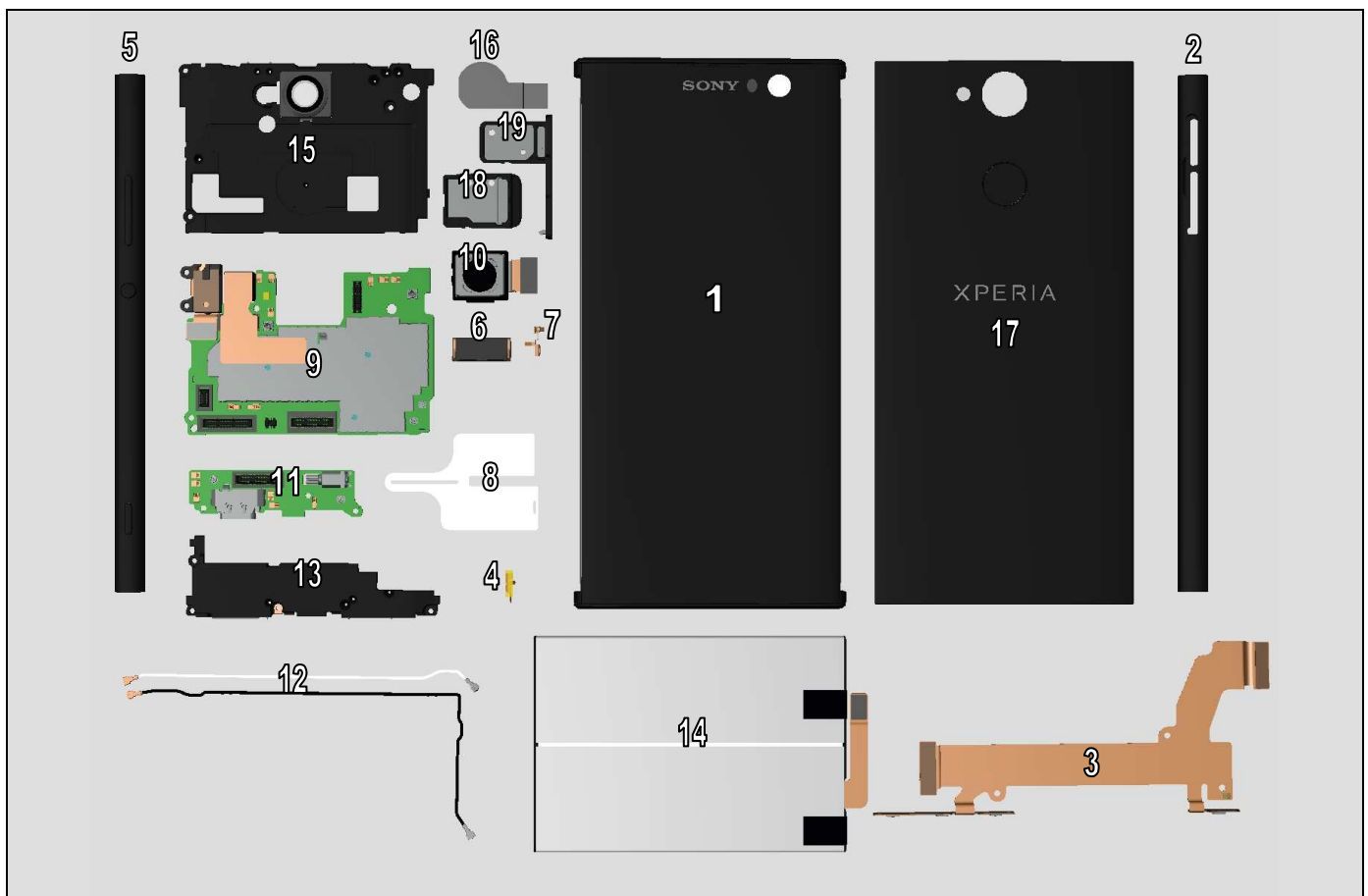
Scrap! Not to be reused!



5 Reassembly

The H3113,H3123,H3133,H4113,H4133 reassembly is done in the following order:

- | | |
|---|---|
| 1. Display Cover Assy | 10. Main Camera |
| 2. Side Panel SIM/SD | 11. Sub PBA Assy |
| 3. Sidekey FPC Assy | 12. RF Cable Black and RF Cable White |
| 4. Bracket Main Antenna and Film Bracket Main Antenna | 13. Main Antenna Speaker Box |
| 5. Keys and Side Panel Keys | 14. Adhesive Battery and Battery |
| 6. Adhesive Ear Speaker and Ear Speaker | 15. Sub Antenna |
| 7. Bracket Main Camera | 16. Conductive Tape Sub Antenna |
| 8. CU Label Tray | 17. FP Module Assy and Battery Cover Assy |
| 9. Main PBA | 18. SD Tray or SD/SIM Tray |
| | 19. Cap Tray SIM |



Reassembly

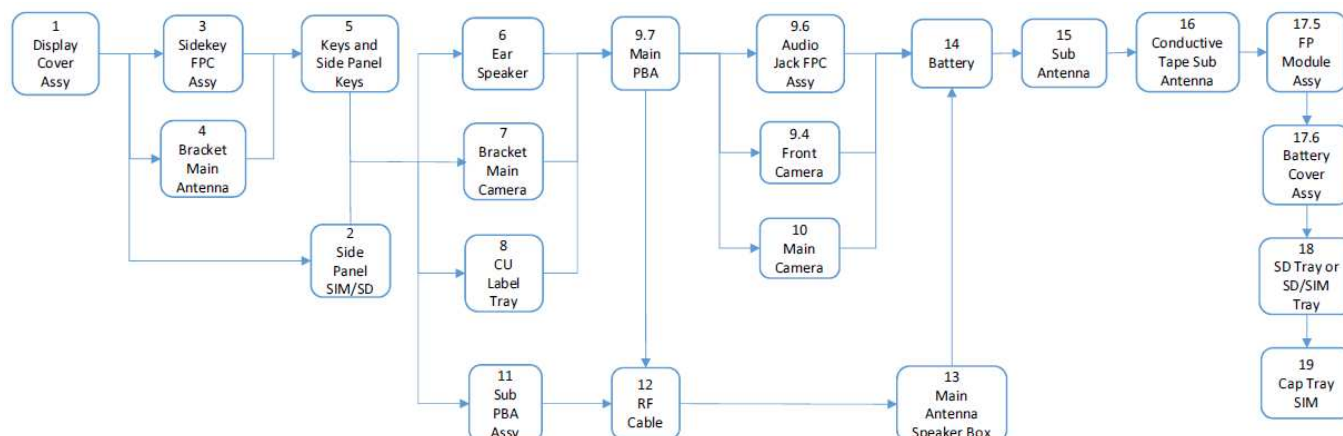
Reassembly Quick Reference Chart is embedded.



Reassembly
Procedure.pdf

Required reassembly procedures of specific part replacement can be identified by Reassembly Quick Reference Chart.

The sequence numbers of the target parts in the chart correspond to the reassembly chapter numbers. Please refer to corresponding chapter content for the parts not mentioned in this chart.



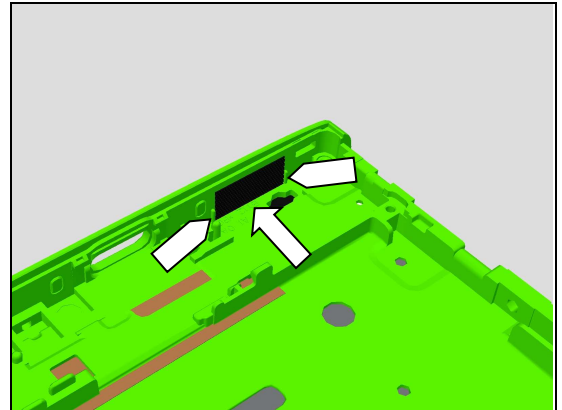
Replacement Target		Assembly Procedure
1	Display Cover Assy	1, 2, 3, 4, 5, 6, 7, 8, 9.4, 9.6, 9.7, 10, 11, 12, 13, 14, 15, 16, 17.5, 17.6, 18, 19
2	Side Panel SIM/SD	2, 5, 6, 7, 8, 9.4, 9.6, 9.7, 10, 11, 12, 13, 14, 15, 16, 17.5, 17.6, 18, 19
3	Sidekey FPC Assy	3, 5, 6, 7, 8, 9.4, 9.6, 9.7, 10, 11, 12, 13, 14, 15, 16, 17.5, 17.6, 18, 19
4	Bracket Main Antenna	4, 5, 6, 7, 8, 9.4, 9.6, 9.7, 10, 11, 12, 13, 14, 15, 16, 17.5, 17.6, 18, 19
5	Keys and Side Panel Keys	5, 6, 7, 8, 9.4, 9.6, 9.7, 10, 11, 12, 13, 14, 15, 16, 17.5, 17.6, 18, 19
6	Ear Speaker	6, 9.4, 9.6, 9.7, 10, 15, 16, 17.5, 17.6, 18, 19
7	Bracket Main Camera	7, 9.4, 9.6, 9.7, 10, 15, 16, 17.5, 17.6, 18, 19
8	CU Label Tray	8, 9.4, 9.6, 9.7, 10, 15, 16, 17.5, 17.6, 18, 19
9.4	Front Camera	9.4, 9.6, 15, 16, 17.5, 17.6, 18, 19
9.6	Audio Jack FPC Assy	9.6, 9.4, 15, 16, 17.5, 17.6, 18, 19
9.7	Main PBA	9.7, 9.4, 9.6, 10, 15, 16, 17.5, 17.6, 18, 19
10	Main Camera	10, 15, 16, 17.5, 17.6, 18, 19
11	Sub PBA Assy	11, 12, 13, 15, 16, 17.5, 17.6, 18, 19
12	RF Cable	12, 13, 15, 16, 17.5, 17.6, 18, 19
13	Main Antenna Speaker Box	13, 15, 16, 17.5, 17.6, 18, 19
14	Battery	14, 15, 16, 17.5, 17.6, 18, 19
15	Sub Antenna	15, 16, 17.5, 17.6, 18, 19
16	Conductive Tape Sub Antenna	16, 17.5, 17.6, 18, 19
17.5	FP Module Assy	17.5, 17.6, 18, 19
17.6	Battery Cover Assy	17.6, 18, 19
18	SD Tray or SD/SIM Tray	18, 19
19	Cap Tray	19

Reassembly

5.1 Display Cover Assy

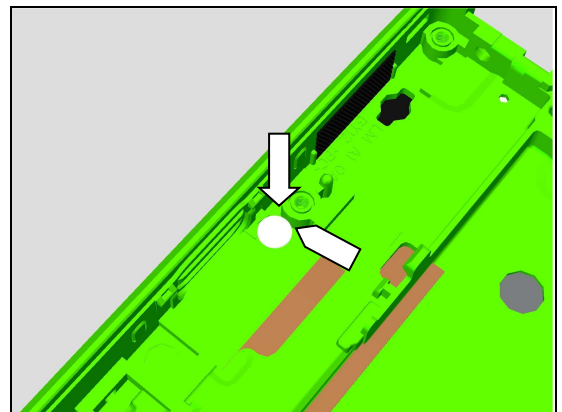
5.1.1 Speaker Mesh

Attach a new Speaker Mesh onto its proper position as shown in picture.



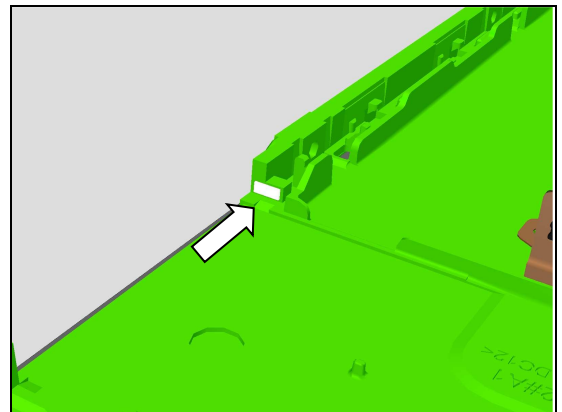
5.1.2 Water Intrusion Label

Attach a new Water Intrusion Label onto its proper position as shown in picture.



5.1.3 Water Intrusion Label Rectangle

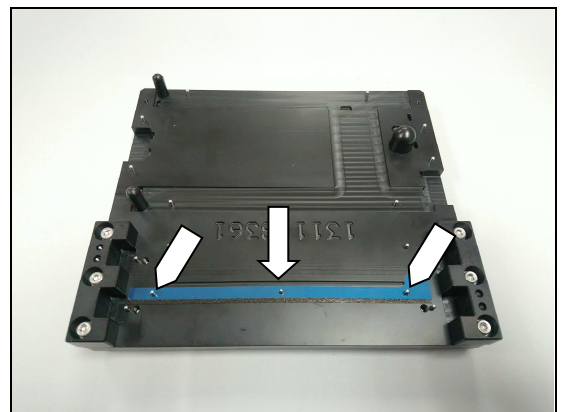
Attach a new Water Intrusion Label Rectangle onto its proper position as shown in picture.



5.2 Side Panel SIM/SD

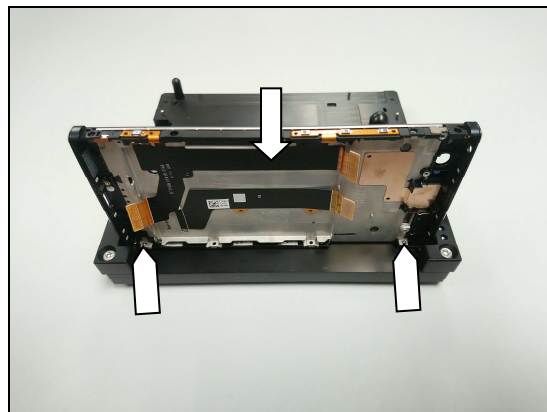
5.2.1 Adhesive LCM SIM/SD Side

Mount a new Adhesive LCM SIM/SD Side onto its proper position of the Panels Adhesive Fixture as shown in picture.



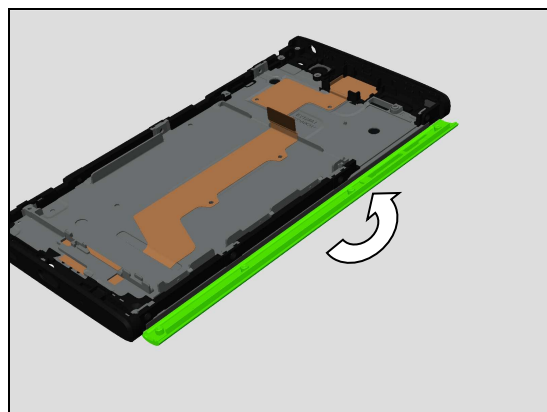
Reassembly

Press to attach the Adhesive LCM SIM/SD Side onto this side of Display Cover Assy as shown in picture.

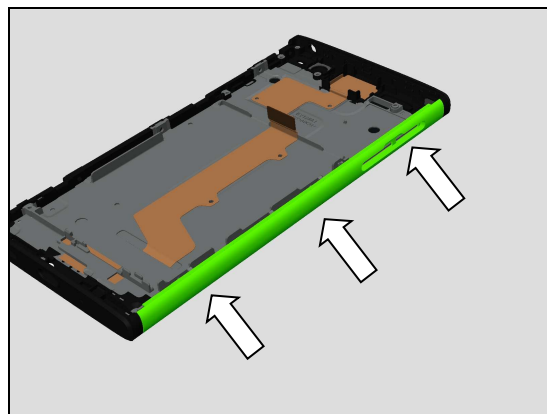


5.2.2 Side Panel SIM/SD

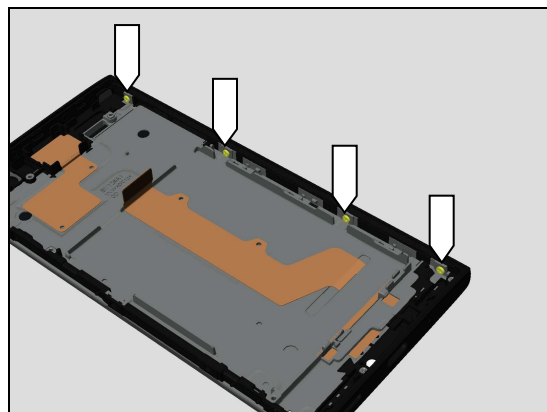
Mount the Side Panel SIM/SD as shown in picture.



Then press the Side Panel SIM/SD after mounting.

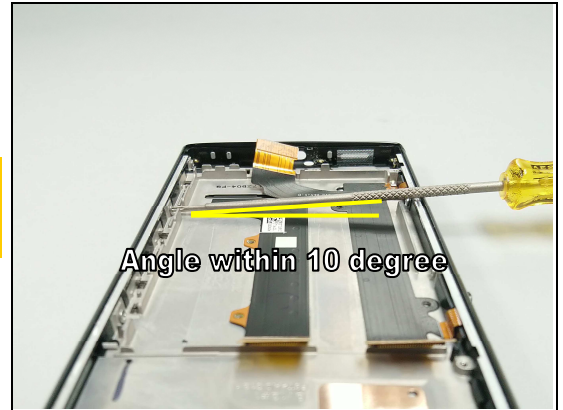


Tighten the new four Screw TORX M1.4 L2.5 Silver with T5 Screwdriver.



Reassembly

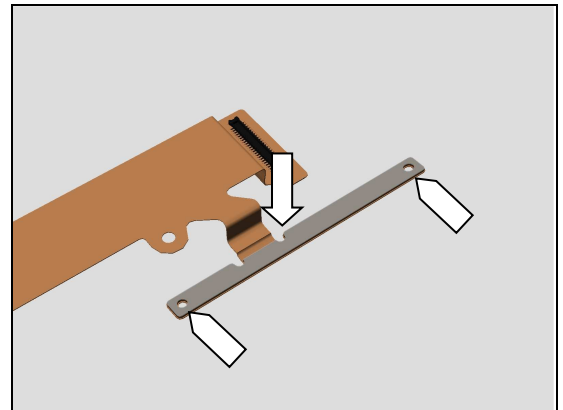
Make sure to secure the angle between Screwdriver bit and front cover within 10 degree when tightening the screws.



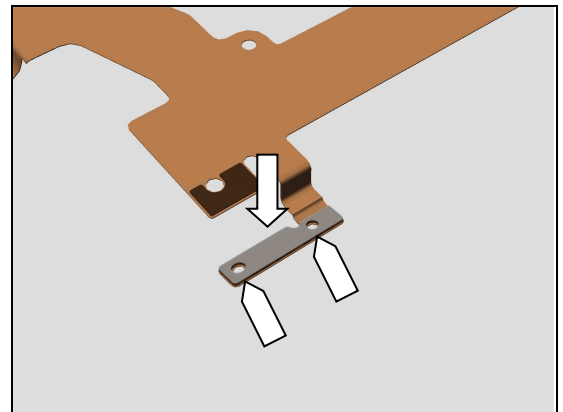
5.3 Sidekey FPC Assy

5.3.1 Adhesive Power_Volume Key FPC and Adhesive Camera Key FPC

Attach a new Adhesive Power_Volume Key FPC onto its proper position as shown in picture.



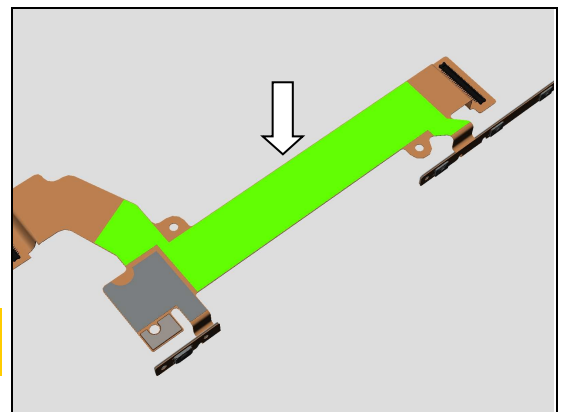
Attach a new Adhesive Camera Key FPC onto its proper position as shown in picture.



5.3.2 Adhesive Sidekey FPC Main, Adhesive Side Key FPC_B and Adhesive Side Key FPC_C

Attach a new Adhesive Sidekey FPC Main onto its proper position as shown in picture.

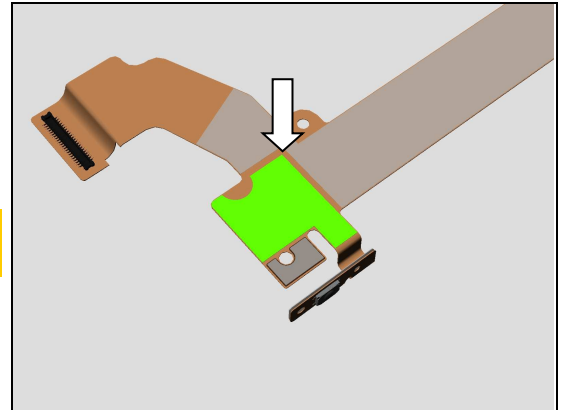
Do not damage the contact spring on the other side of FPC!



Reassembly

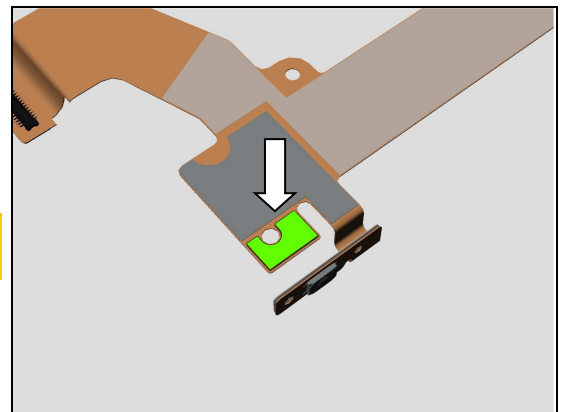
Attach a new Adhesive Side Key FPC_B onto its proper position as shown in picture.

Do not damage the contact spring on the other side of FPC!



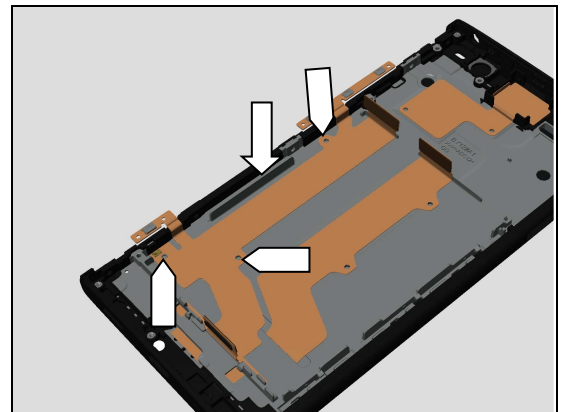
Attach a new Adhesive Side Key FPC_C onto its proper position as shown in picture.

Do not damage the contact spring on the other side of FPC!

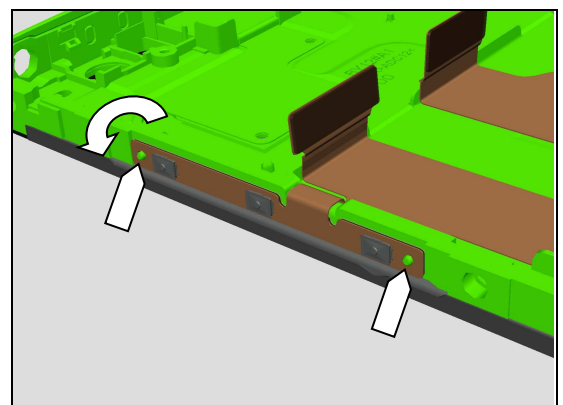


5.3.3 Sidekey FPC Assy

Attach the Sidekey FPC Assy onto its proper position as shown in picture.

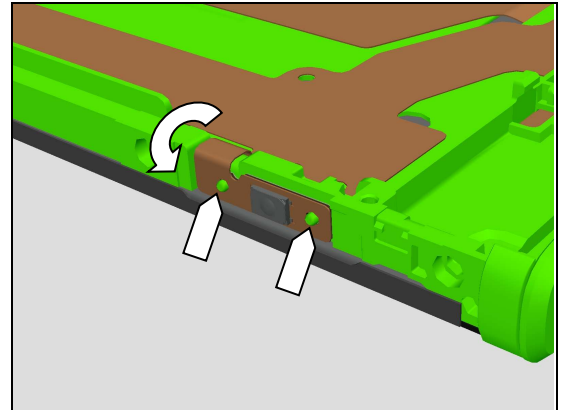


Attach the Power_Volume Key FPC onto its proper position as shown in picture.



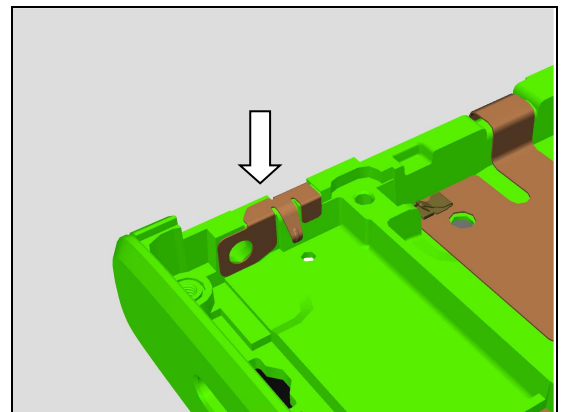
Reassembly

Attach the Camera Key FPC onto its proper position as shown in picture.

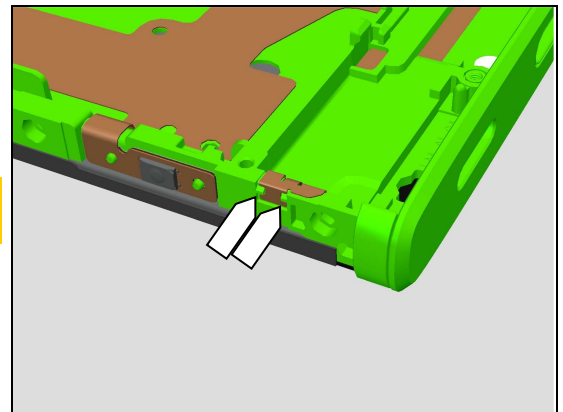


5.4 Bracket Main Antenna and Film Bracket Main Antenna

Insert to mount the Bracket Main Antenna onto its proper position as shown in picture.

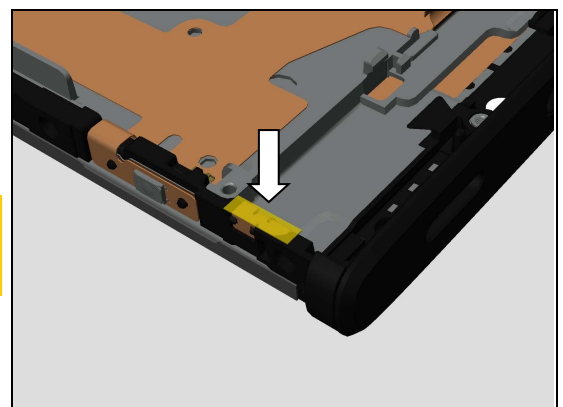


Make sure the Bracket Main Antenna is properly snapped after mounting as shown in picture.



Attach a new Film Bracket Main Antenna as shown in picture.

Make sure the film cover the Bracket Main Antenna completely! Because this film electrically insulate the Bracket Main Antenna from the Side Panel Keys.



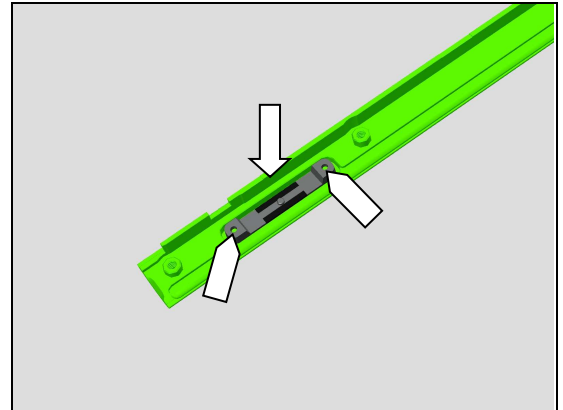
Reassembly

5.5 Keys and Side Panel

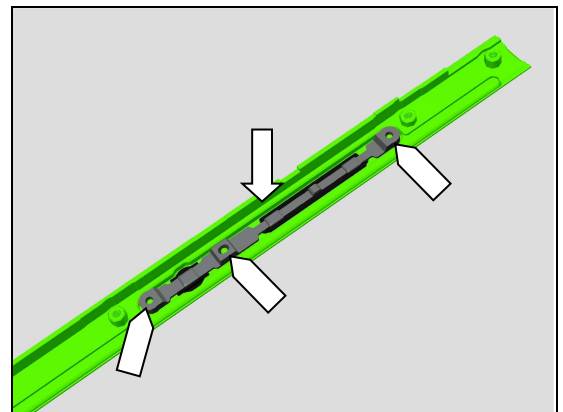
Keys

5.5.1 Key Camera and Key Power_Volume

Mount the Key Camera onto its proper position as shown in picture.

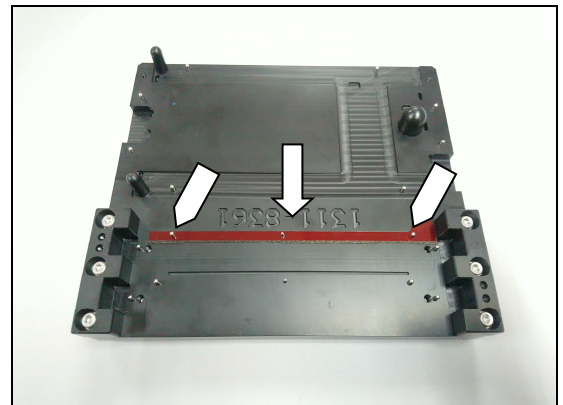


Mount the Key Power_Volume onto its proper position as shown in picture.

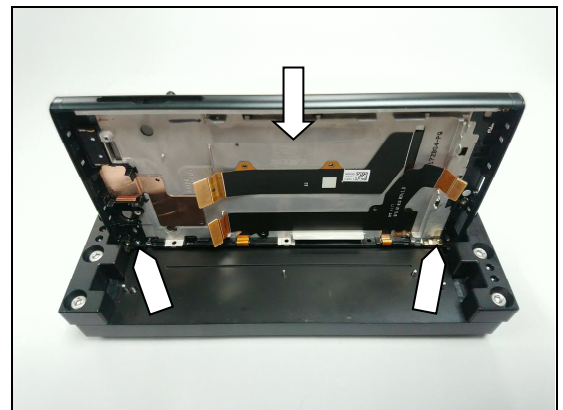


5.5.2 Adhesive LCM Keys Side and Side Panel Keys

Mount a new Adhesive LCM Keys Side onto its proper position of the Panels Adhesive Fixture as shown in picture.

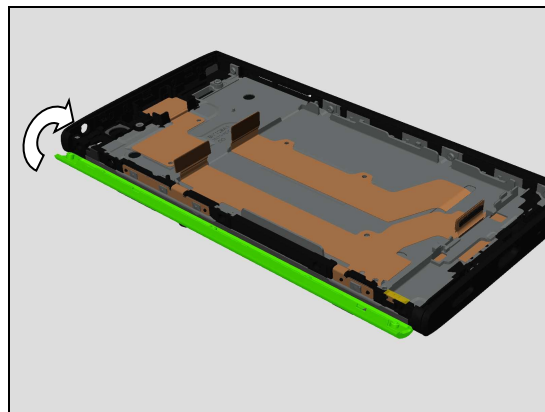


Press to attach the Adhesive LCM Keys Side onto this side of the Display Cover Assy as shown in picture.

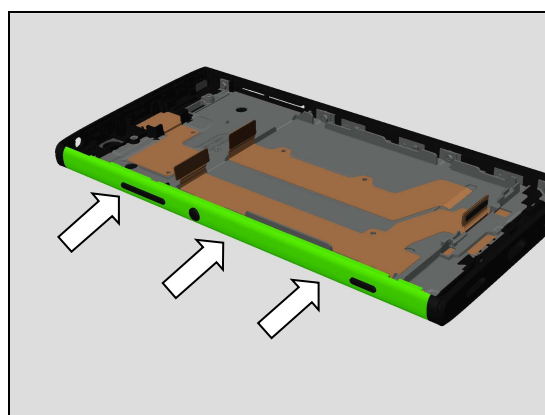


Reassembly

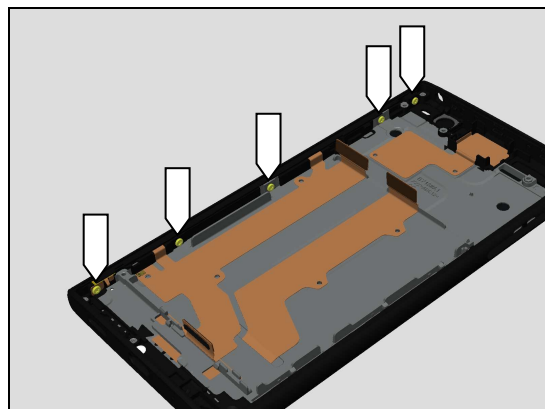
Mount the Side Panel Keys as shown in picture.



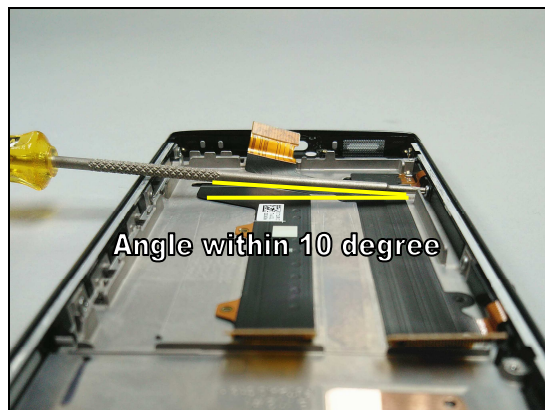
Then press the Side Panel Keys after mounting.



Tighten the new five Screw TORX M1.4 L2.5 Silver with T5 Screwdriver.



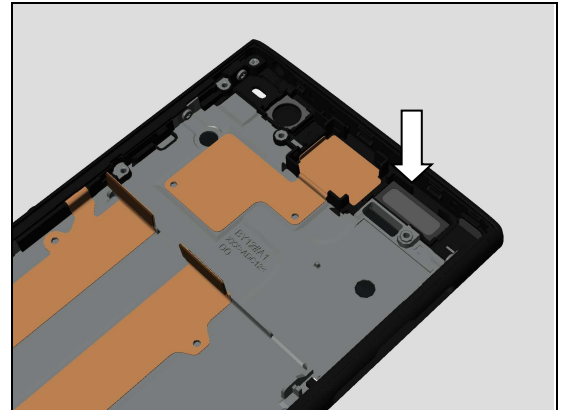
Make sure to secure the angle between Screwdriver bit and front cover within 10 degree when tightening the screws.



Reassembly

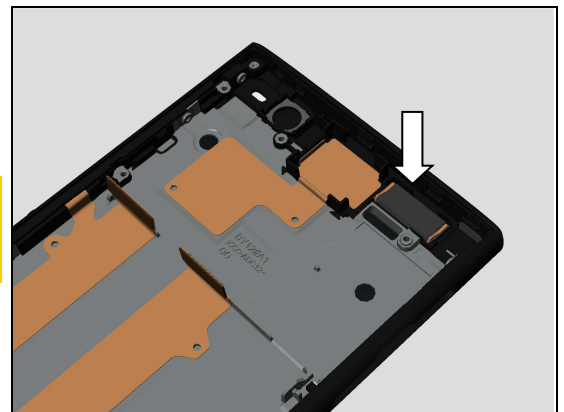
5.6 Adhesive Ear Speaker and Ear Speaker

Attach a new Adhesive Ear Speaker into its cavity as shown in picture.



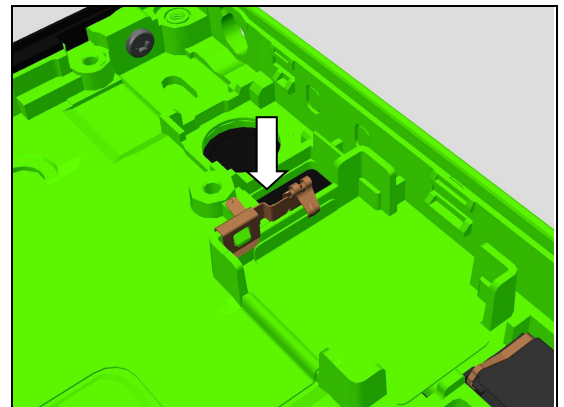
Mount a new Ear Speaker in its cavity and press it.

Note the correct orientation of the Ear Speaker contact springs to be installed as shown in picture!
Be careful! Do not press contact springs when pressing.

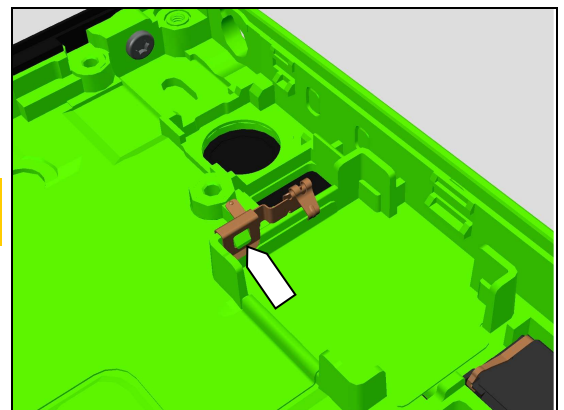


5.7 Bracket Main Camera

Insert to mount the Bracket Main Camera onto its proper position by using plastic tweezers as shown in picture.



Make sure the Bracket Main Camera is properly snapped as shown in picture.



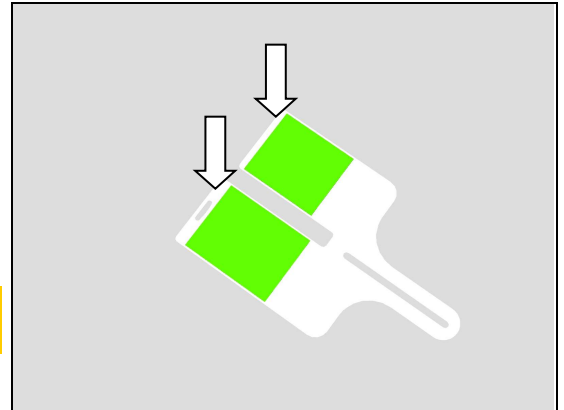
Reassembly

5.8 CU Label Tray

5.8.1 CU Label

Attach a new CU Label onto its proper position as shown in picture.

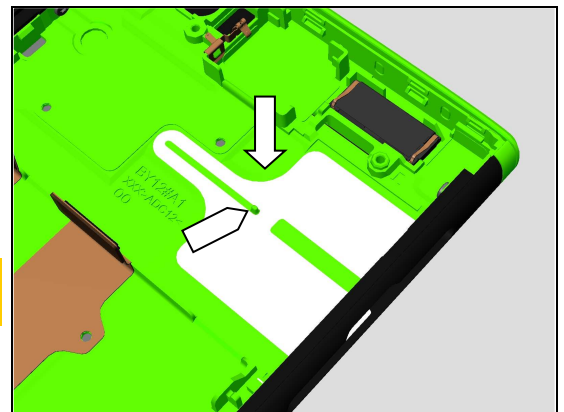
Note! New CU Label have to be replaced only when board swap.



5.8.2 CU Label Tray

Mount the CU Label Tray onto its proper position as shown in picture.

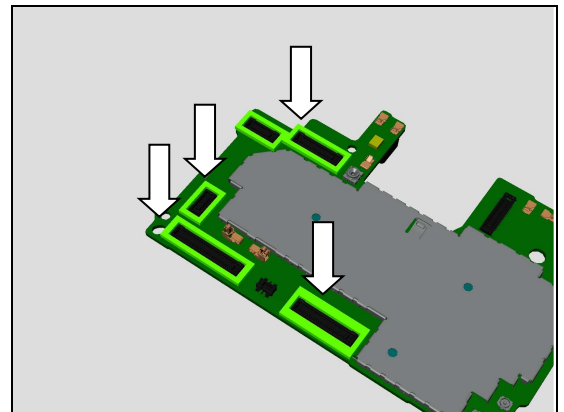
Make sure the correct position of the position pin in the CU Label Tray slot!



5.9 Main PBA

5.9.1 Gasket BtB FP Module, Gasket BTB Front Cam&AJ, Gasket BTB LCM and Gasket BTB Sidekey FPC

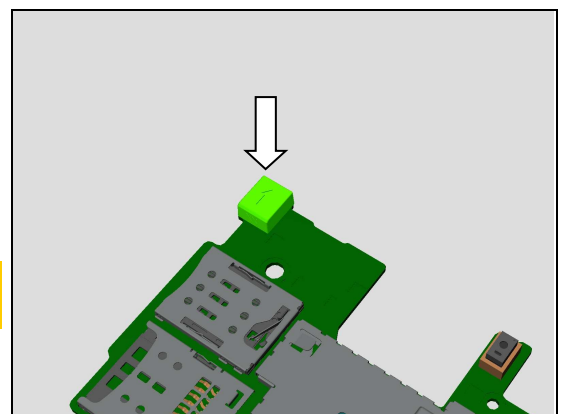
Attach new Gasket BTB onto their proper position as shown in picture.



5.9.2 Rubber 2nd MIC

Attach a new Rubber 2nd MIC onto its proper position as shown in picture.

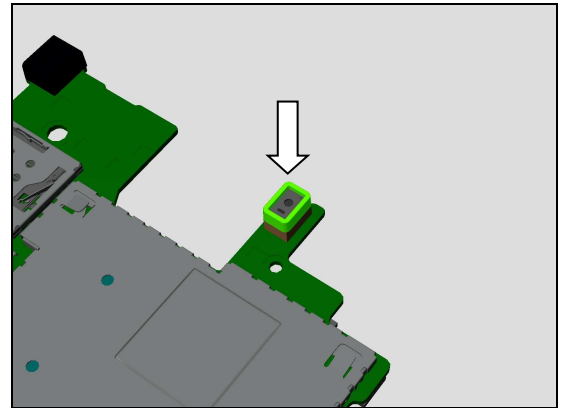
Note the correct orientation of the Rubber 2nd MIC to be installed as shown in picture!



Reassembly

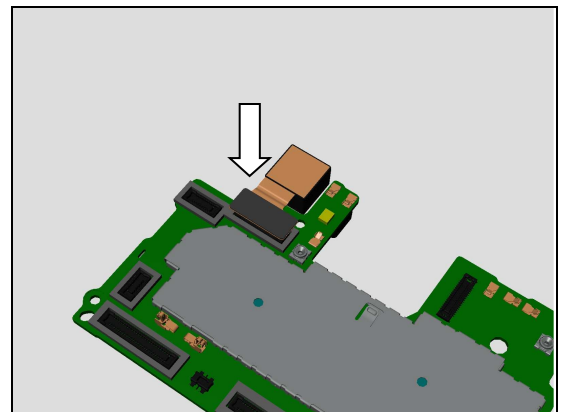
5.9.3 Rubber PL Sensor

Mount the Rubber PL Sensor as shown in picture.



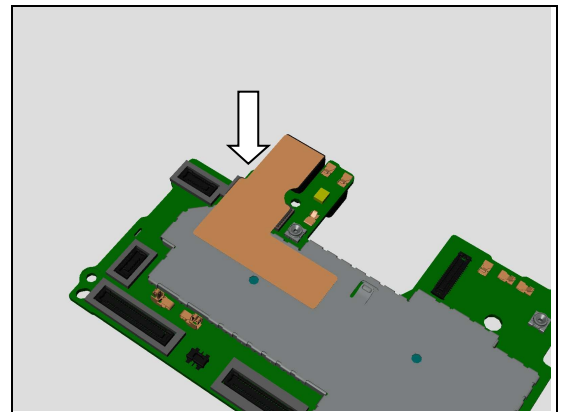
5.9.4 Front Camera

Press to snap the Front Camera connector.



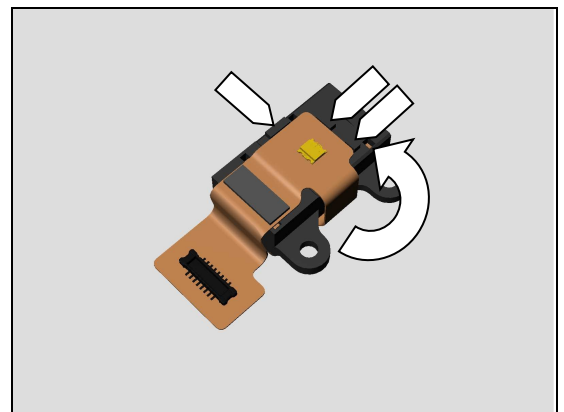
5.9.5 Copper Foil Front Camera

Attach a new Copper Foil Front Camera in alignment with guiding lines on the shielding can lid and Front Camera shape.



5.9.6 Audio Jack FPC Assy

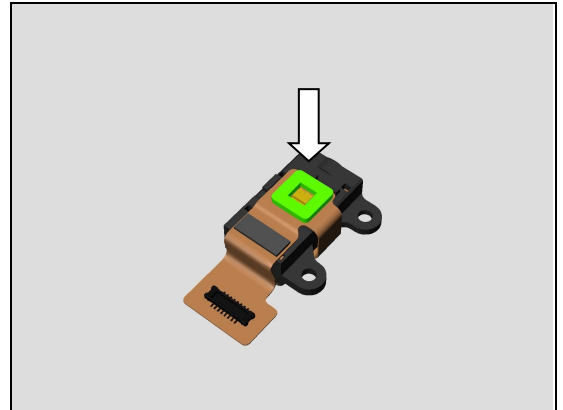
In case replace a new Audio Jack FPC Assy, firstly fold and attach the FPC onto its proper position as shown in picture.



Reassembly

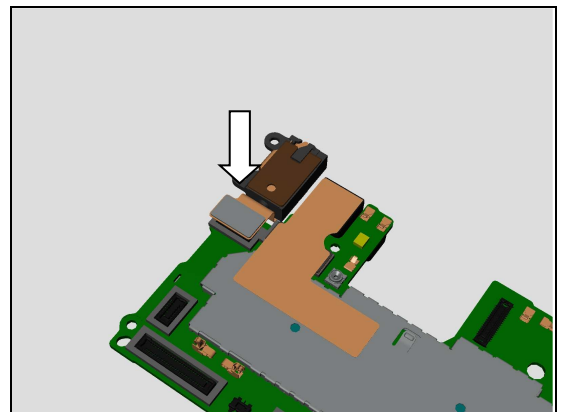
5.9.6.1 Sponge Notification LED

Attach a new Sponge Notification LED onto its proper position as shown in picture.



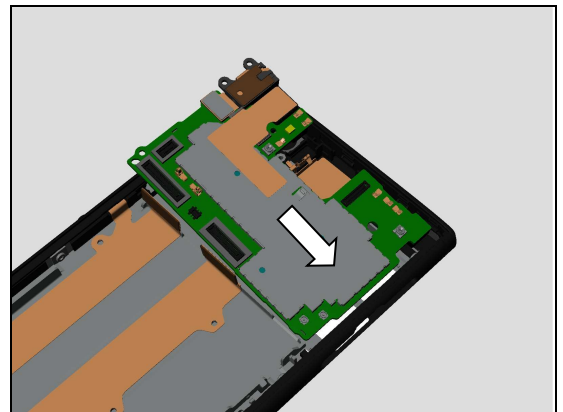
5.9.6.2 Audio Jack FPC Assy

Press to snap the Audio Jack FPC Assy connector.

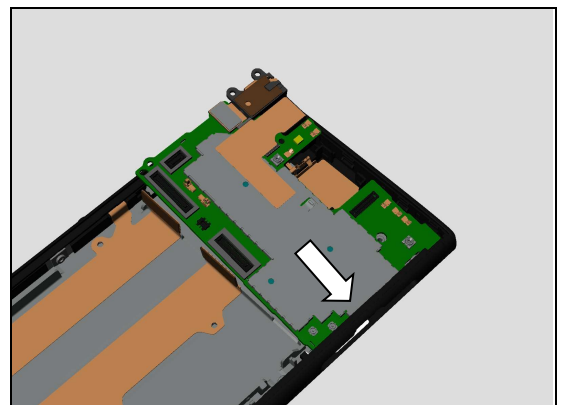


5.9.7 Main PBA

Align the Main PBA with SIM/SD hole as shown in picture.

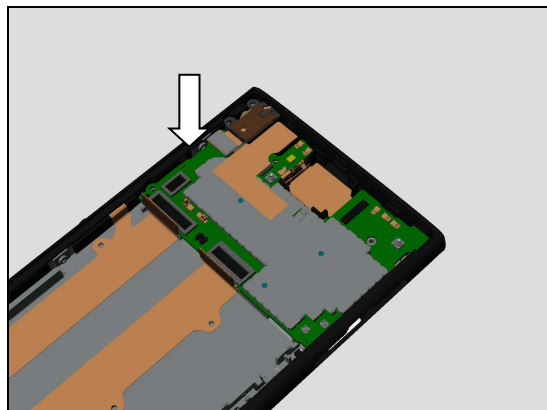


Insert to mount the Main PBA into the SIM/SD hole as shown in picture.

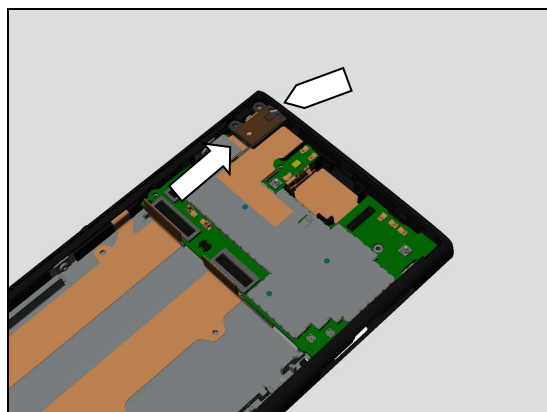


Reassembly

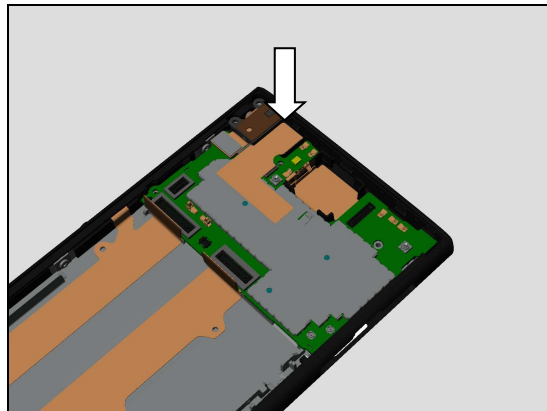
Press to snap the Main PBA



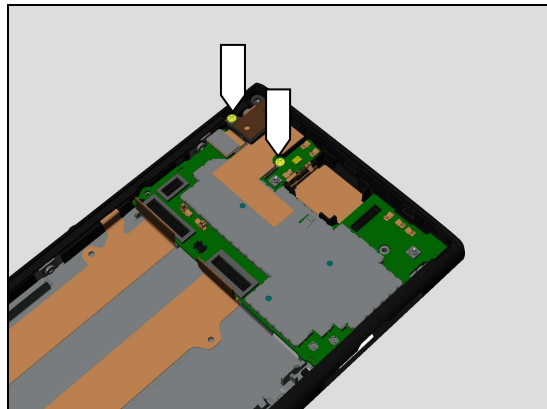
Insert to mount the Audio Jack FPC Assy into its hole as shown in picture.



Press to secure the Front Camera into its cavity.

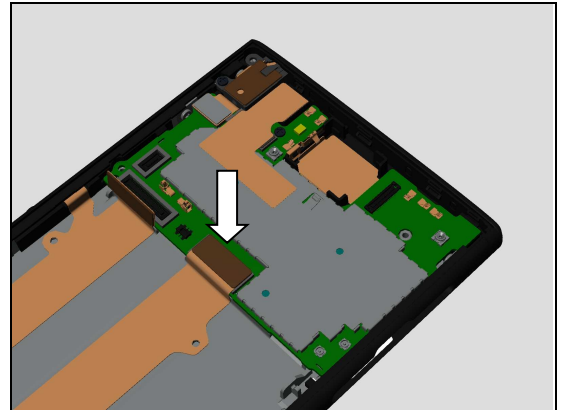


Apply 6Ncm torque when tightening the new two Screw Cross M1.2 L2.62 with Bits JCIS No.0.



Reassembly

Press to snap the BtB connector of Display.



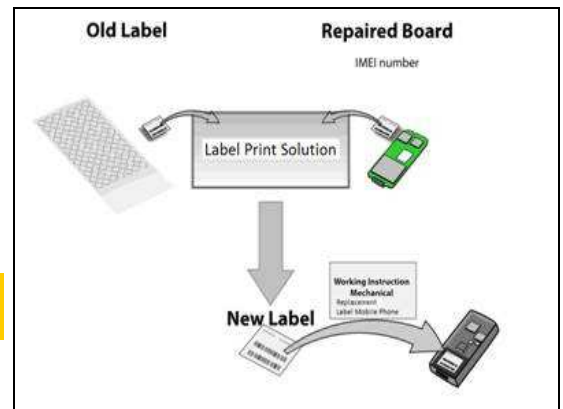
Press to snap the BtB connector of the Sidekey FPC Assy.



BOARD SWAP – CHANGE LABEL

Follow the instructions in the Generic Repair Manual – Build swap for change of label.

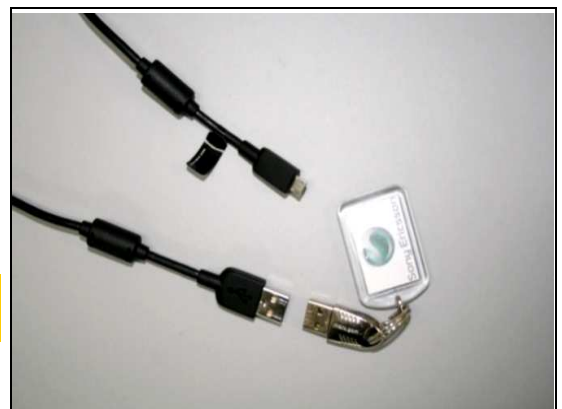
Note! CU Label have to be replaced only when board swap.



Board Swap – Customize of Software

Follow the instructions in the Generic Repair Manual – Build swap for customization of the software.

Note! Customize of Software have to be performed only when board swap.

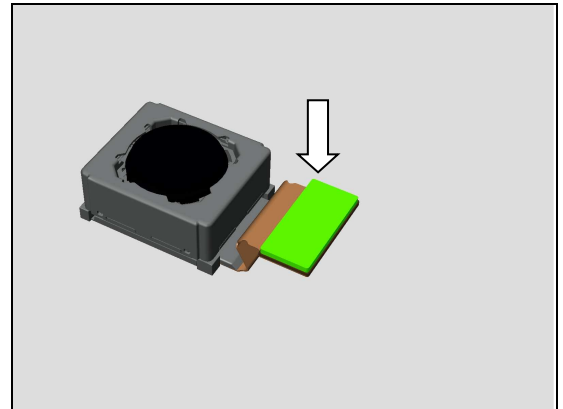


Reassembly

5.10 Main Camera

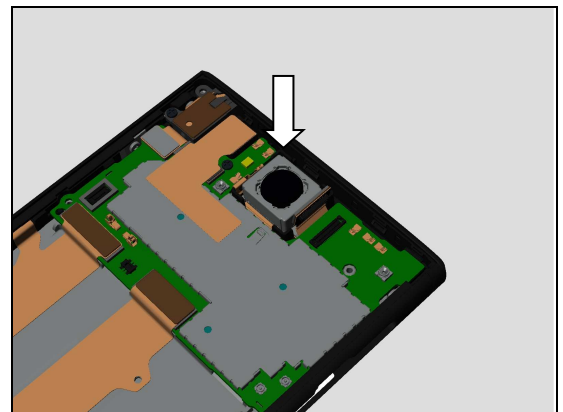
5.10.1 Sponge Main Camera BtB Conn

Attach a new Sponge Main Camera BtB Conn onto its proper position as shown in picture.



5.10.2 Main Camera

Mount the Main Camera into its cavity.

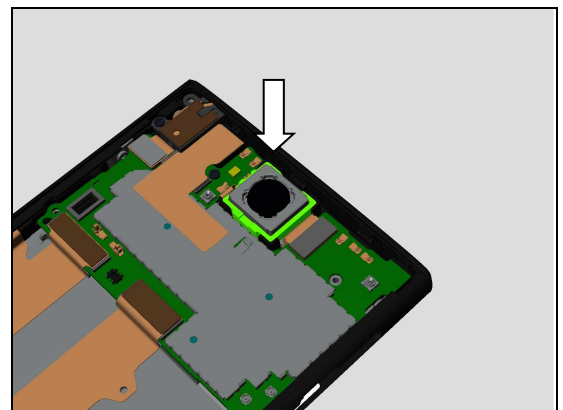


Press to snap the BtB connector of the Main Camera.



5.10.3 Rubber Main Camera

Mount the Rubber Main Camera onto its proper position as shown in picture.

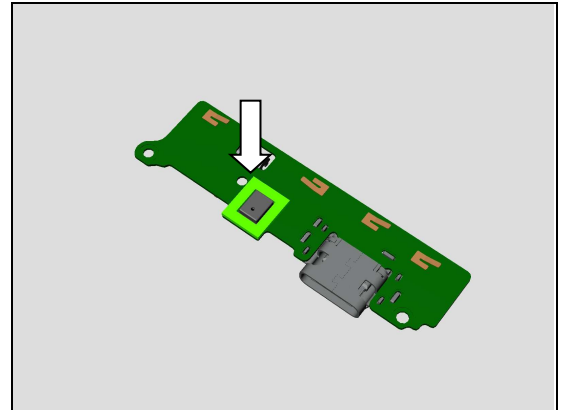


Reassembly

5.11 Sub PBA Assy

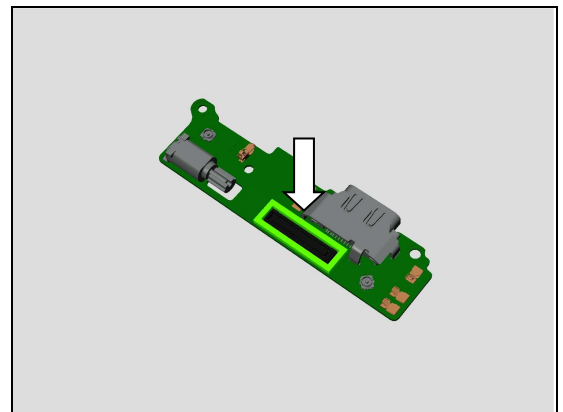
5.11.1 Sponge 1st Mic

Attach a new Sponge 1st Mic in its proper position as shown in picture.



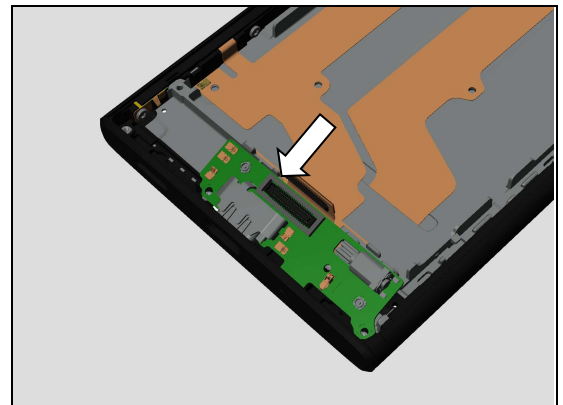
5.11.2 Gasket BTB Sub PBA

Attach a new Gasket BTB Sub PBA in its proper position as shown in picture.

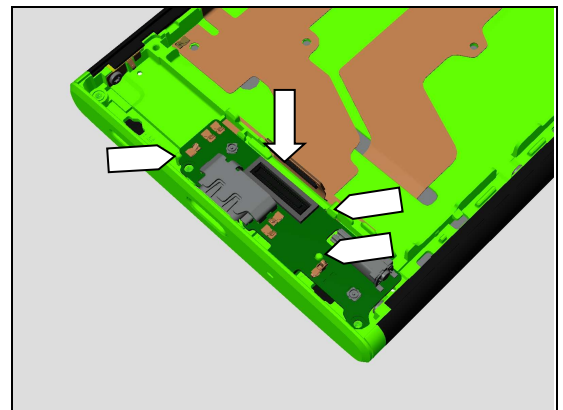


5.11.3 Sub PBA Assy

Insert to mount the Sub PBA Assy into USB hole as shown in picture.

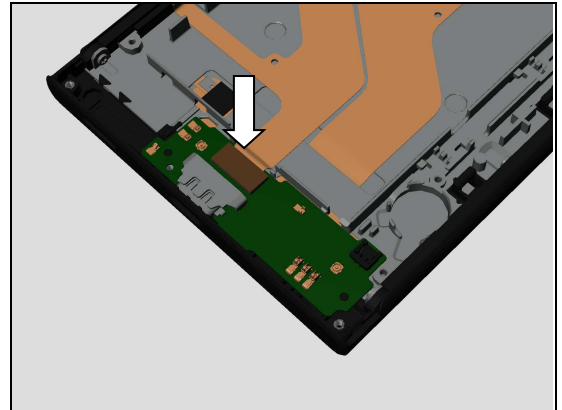


Press to snap the Sub PBA Assy into its proper position as shown in picture.



Reassembly

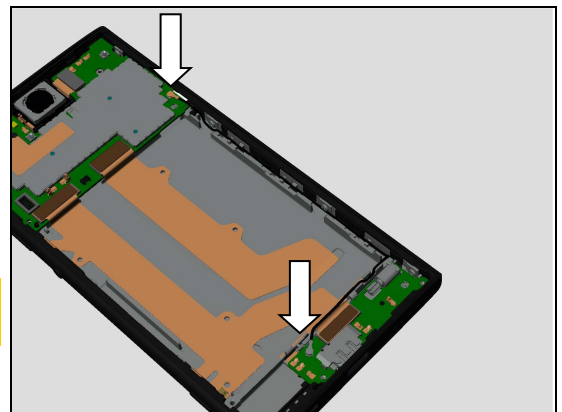
Press to snap the BtB connector of the Sidekey FPC Assy.



5.12 RF Cable Black and RF Cable White

Press to snap the RF Cable Black connectors.

Note! The golden color connector must be assembled onto the Main PBA.



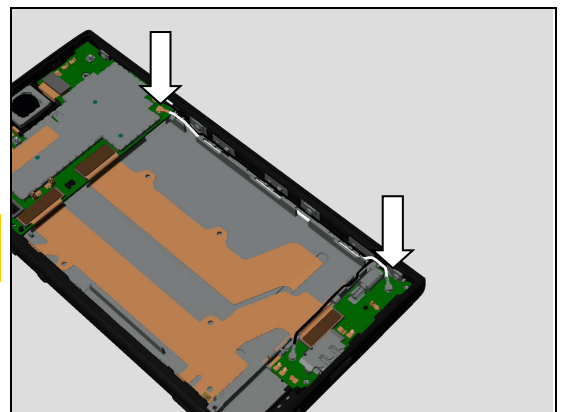
Make sure the RF Cable Black is mounted into its cavity as shown in picture.

Make sure the three metal rings contact to the front cover.



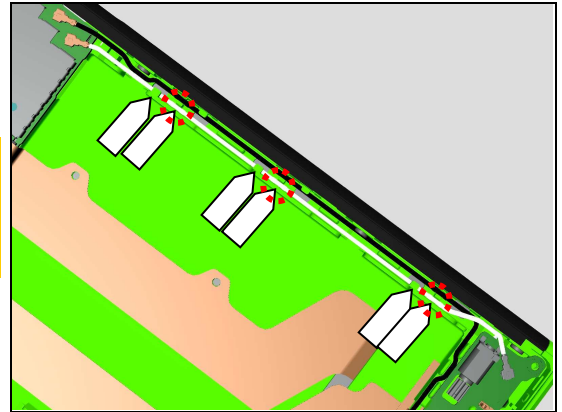
Press to snap the RF Cable White connectors.

Note! The golden color connector must be assembled onto the Main PBA.



Reassembly

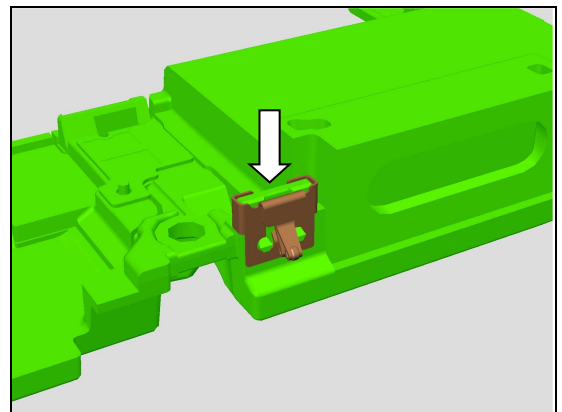
Make sure the RF Cable White is mounted into its cavity as shown in picture.
Make sure the three metal rings contact to the front cover.



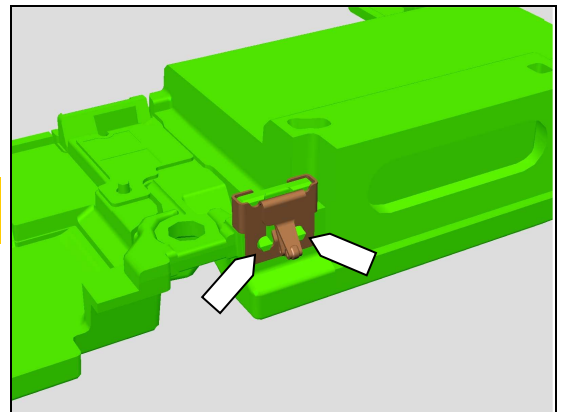
5.13 Main Antenna Speaker Box

5.13.1 Spring Antenna

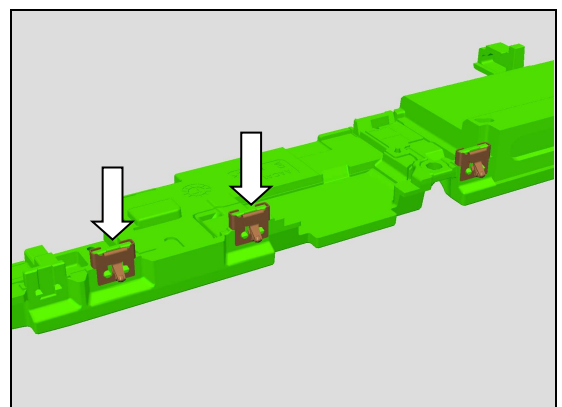
Insert to mount the Spring Antenna onto its proper position as shown in picture.



Make sure the Spring Antenna is properly snapped as shown in picture.



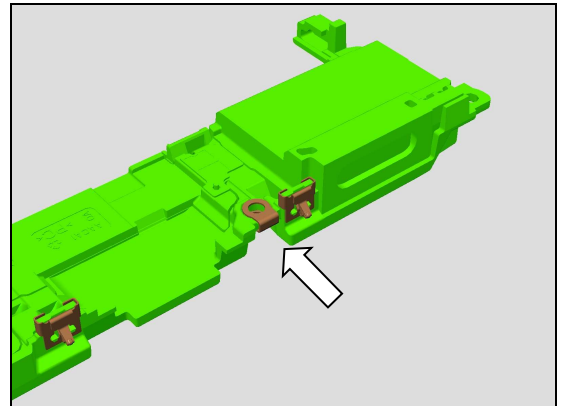
Insert to mount the other two Spring Antenna onto its proper position.



Reassembly

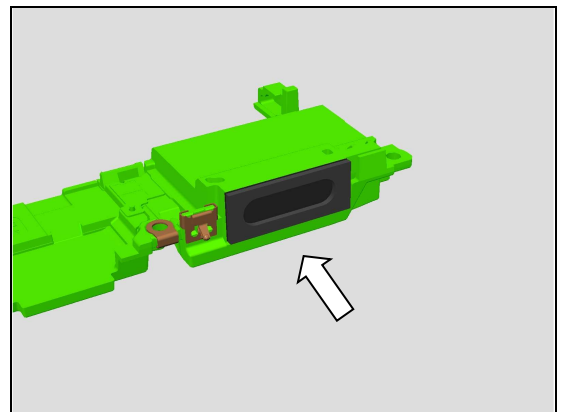
5.13.2 Contact Clip Speaker Box

Insert to mount the Contact Clip Speaker Box as shown in picture.



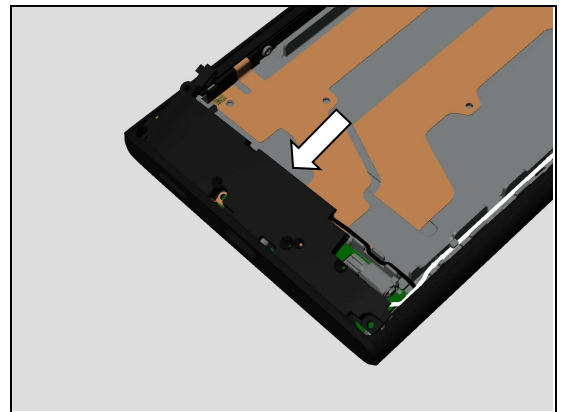
5.13.3 Speaker Sponge

Attach a new Speaker Sponge onto its proper position as shown in picture.

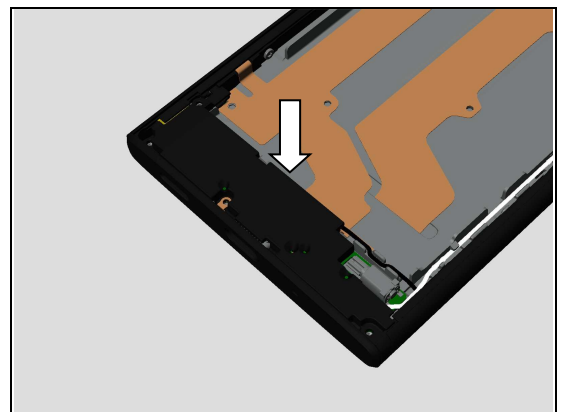


5.13.4 Main Antenna Speaker Box

Firstly insert to mount bottom side of the Main Antenna Speaker Box as shown in picture.



Then press to snap it.



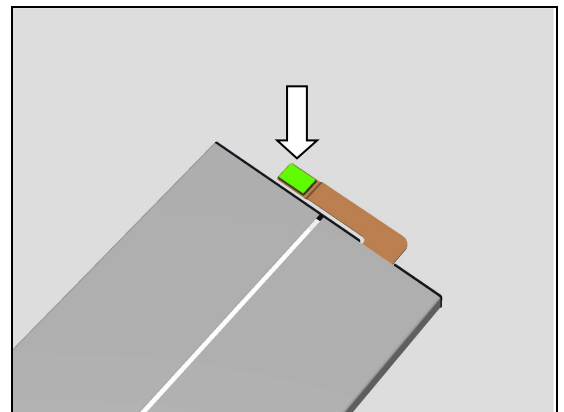
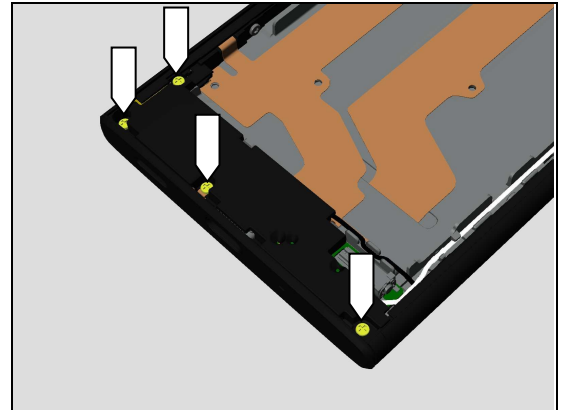
Reassembly

Apply 8Ncm torque when tightening the new four Screw Cross M1.2 L2.62 with Bits JCIS No.0.

5.14 Adhesive Battery and Battery

5.14.1 Sponge Battery Connector

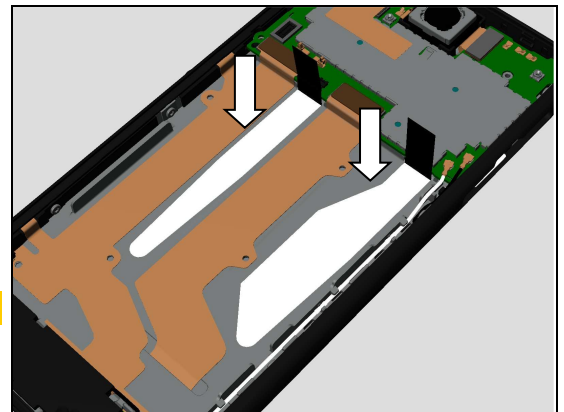
Attach a new Sponge Battery Connector onto its proper position as shown in picture.



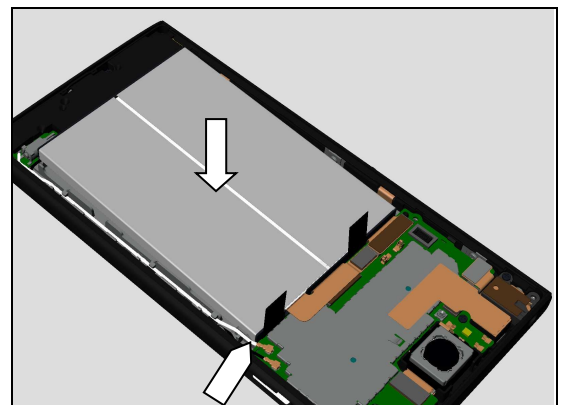
5.14.2 Adhesive Battery and Battery

Attach a new Adhesive Battery Left and Adhesive Battery Right in alignment with the guiding lines on the front cover as shown in picture.

Do not attach the Adhesive Battery onto the FPC.

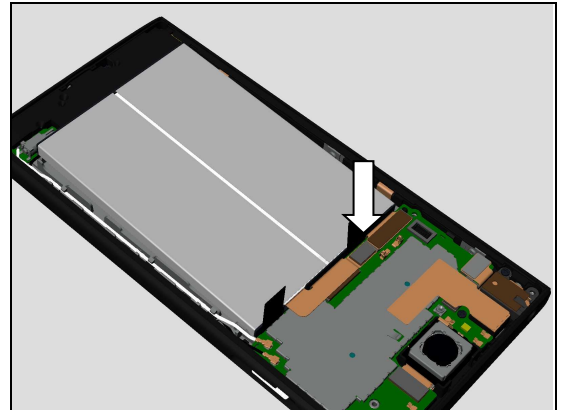


Firstly mount the Battery into its cavity in alignment with this corner as shown in picture.

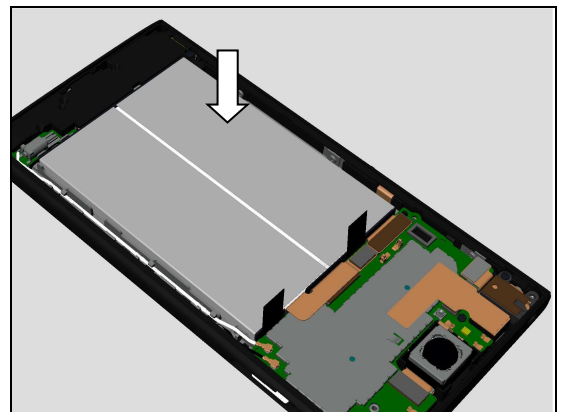


Reassembly

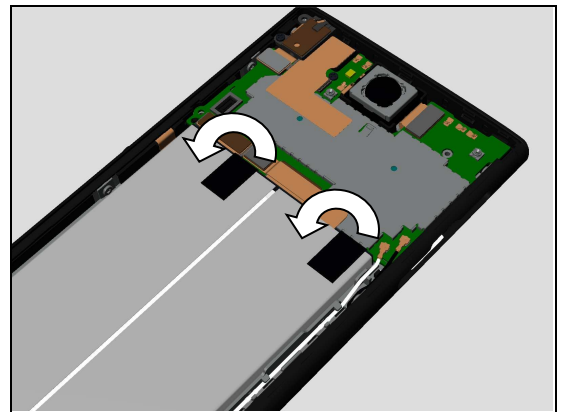
Then press to snap the Battery connector.



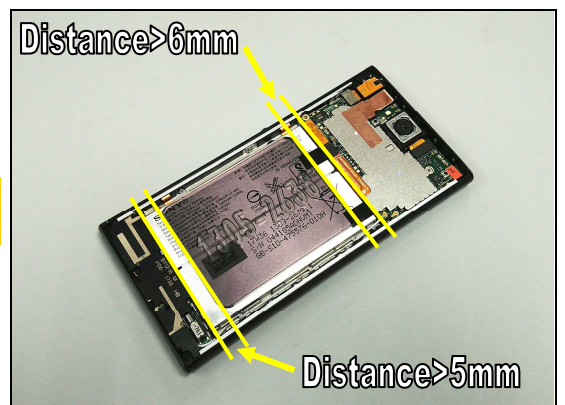
And then mount the Battery into its cavity.



Attach the two tabs onto the Battery as shown in picture.

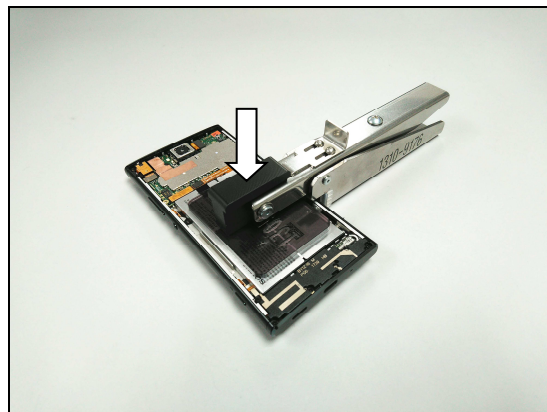


Place the Press Spacer onto this area of the Battery as shown in picture.



Reassembly

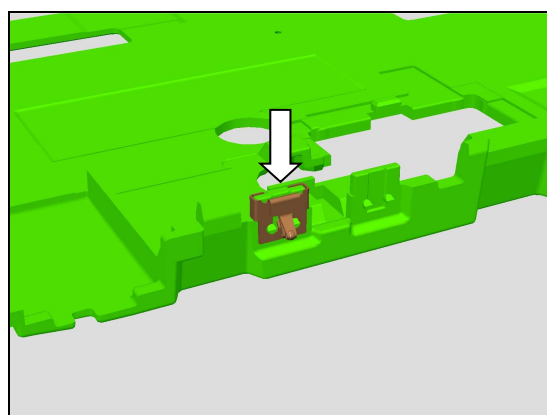
Press the Battery for 10 seconds by using Press Clamp as shown in picture.



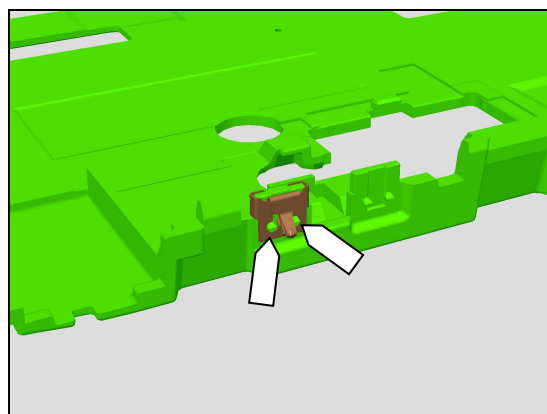
5.15 Sub Antenna

5.15.1 Spring Antenna

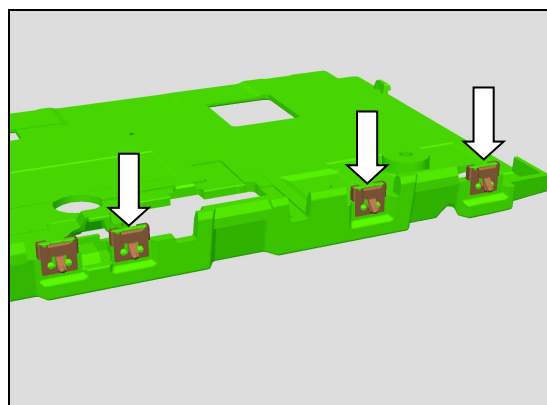
Insert to mount the Spring Antenna as shown in picture.



Make sure the Spring Antenna is properly snapped as shown in picture.



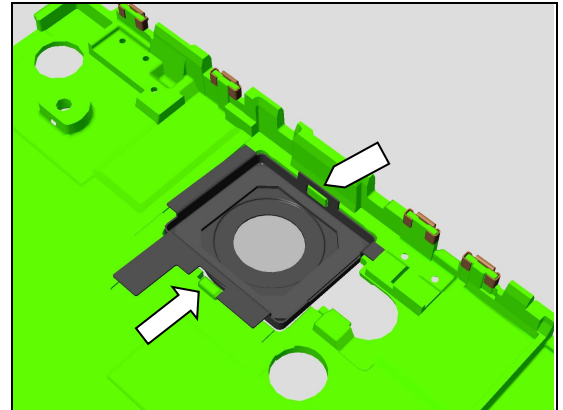
Insert to mount the other three Spring Antenna.



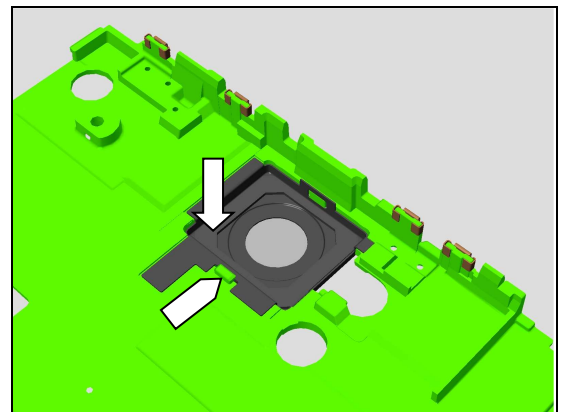
Reassembly

5.15.2 Main Camera Lens Assy

Insert to mount the Main Camera Lens Assy onto this small rib as shown in picture.



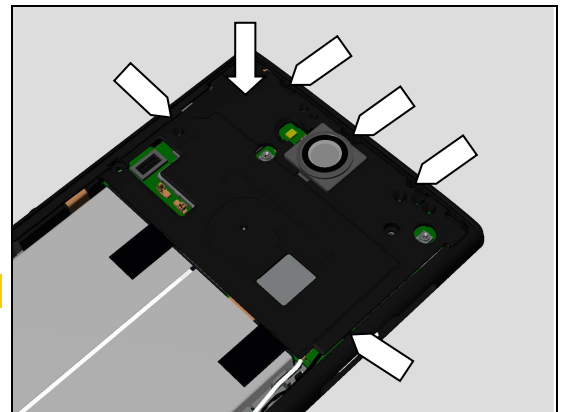
Press to snap the Main Camera Lens Assy onto the Sub Antenna as shown in picture.



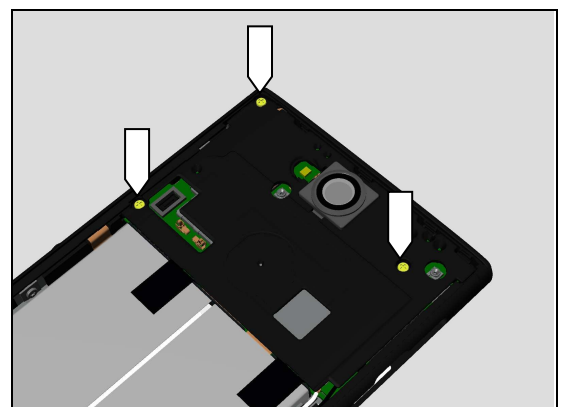
5.15.3 Sub Antenna

Mount the Sub Antenna into its proper position as shown in picture and press to snap it.

Secure all hooks snapped as show in picture.



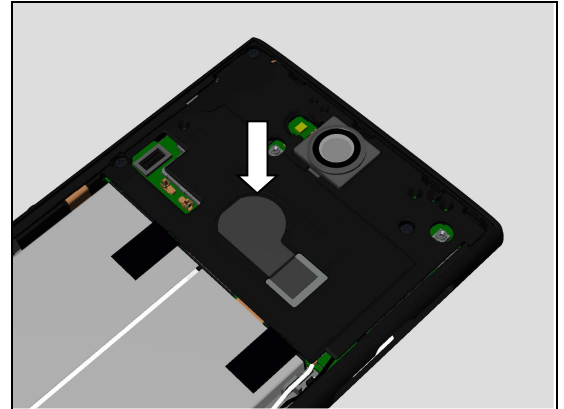
Apply 8Ncm torque when tightening the new three Screw Cross M1.2 L2.62 with Bits JCIS No.0.



Reassembly

5.16 Conductive Tape Sub Antenna

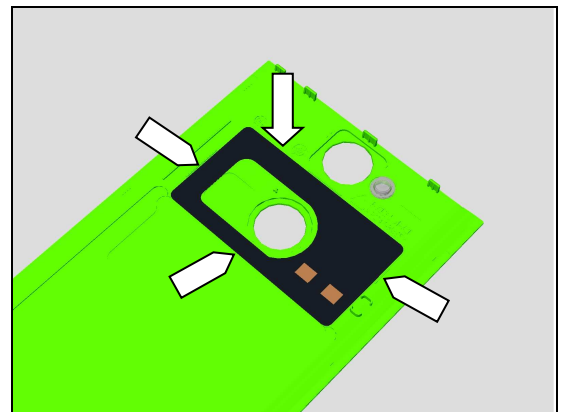
Attach a new Conductive Tape Sub Antenna onto its proper position as shown in picture.



5.17 FP Module Assy and Battery Cover Assy

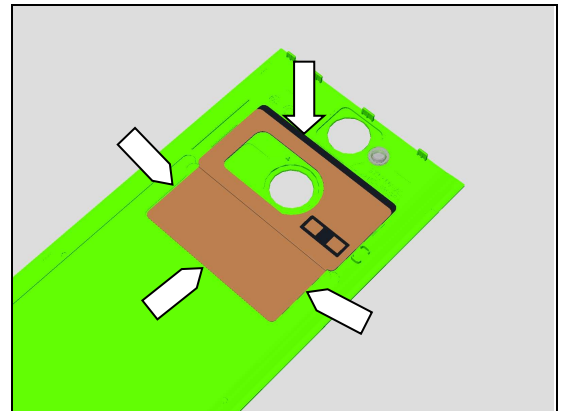
5.17.1 NFC Antenna

Attach a new NFC Antenna in alignment with the guiding ribs on the Battery Cover Assy and press it to secure attachment.



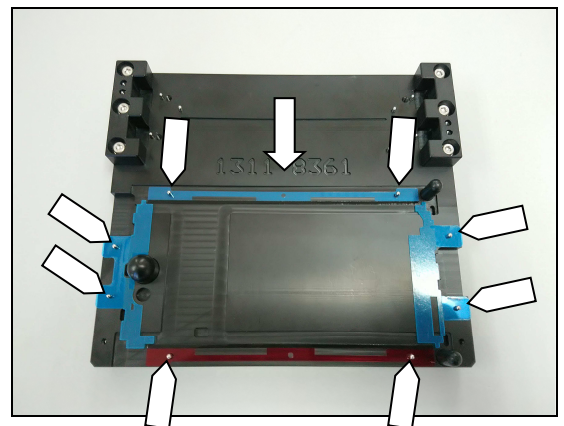
5.17.2 Copper Foil Battery Cover

Attach a new Copper Foil Battery Cover in alignment with the shape of its cavity on the Battery Cover Assy and press it to secure attachment.



5.17.3 Adhesive Battery Cover Top, Adhesive Battery Cover Bottom, Adhesive Battery Cover Left and Adhesive Battery Cover Right

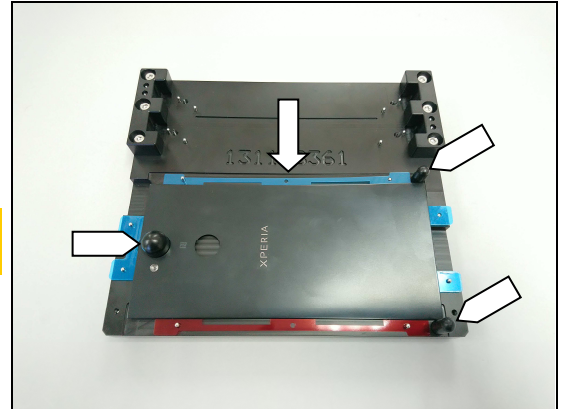
Mount a new Adhesive Battery Cover Top, Adhesive Battery Cover Bottom, Adhesive Battery Cover Left and Adhesive Battery Cover Right onto the Panels Adhesive Fixture as shown in picture.



Reassembly

Mount the Battery Cover Assy onto the Panels Adhesive Fixture, then press the adhesive area to attach the adhesive.

Make sure all remaining adhesive residue on the Battery Cover Assy have been removed before attaching!

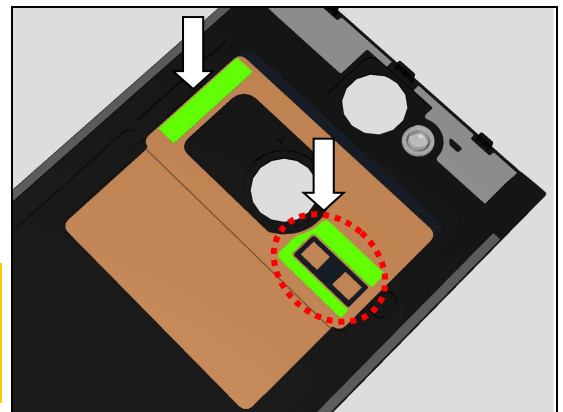


5.17.4 Adhesive NFC_A and Adhesive NFC_B

Attach a new Adhesive NFC_A and Adhesive NFC_B in its proper position on the Copper Foil Battery Cover as shown in picture.

Make sure all remaining adhesive residue have been removed before attaching!

Be careful! Do not attach the Adhesive NFC_A onto the NFC antenna contact pads.

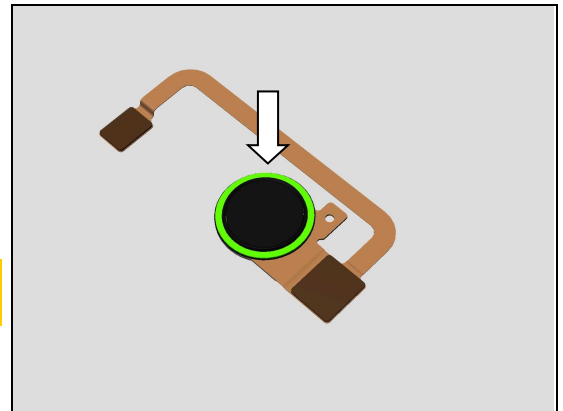


5.17.5 FP Module Assy

5.17.5.1 Adhesive FP Module

Attach a new Adhesive FP Module in its proper position as shown in picture.

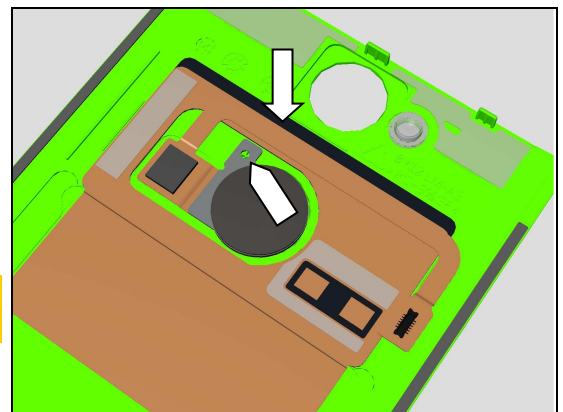
Make sure all remaining adhesive residue have been removed before attaching!



5.17.5.2 FP Module Assy

Mount the FP Module Assy into its hole and in alignment with the guiding pin as shown in picture. And then press to secure its attachment.

Make sure all remaining adhesive residue on the Battery Cover Assy have been removed before attaching!



Reassembly

5.17.6 Battery Cover Assy

Make sure all remaining adhesive residue on the Display Cover Assy have been removed before assembly!

Press to snap the FP Module Assy BtB connector.

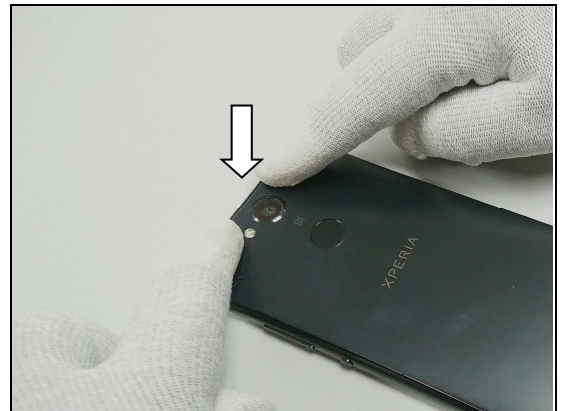
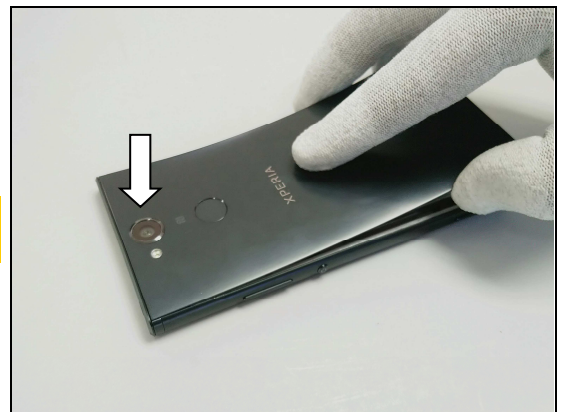
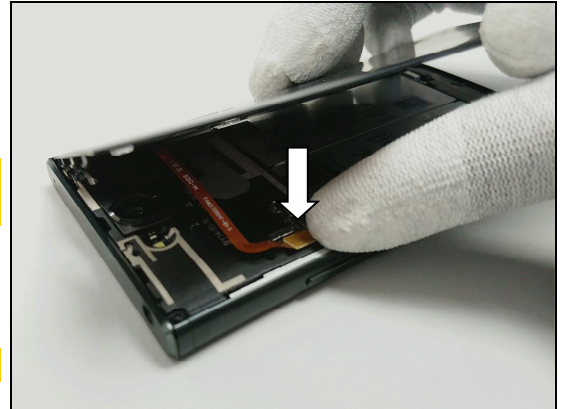
Be careful! Do not damage the FP Module Assy FPC.

Mount the Battery Cover Assy from top side.

Be careful! Do not damage the FP Module Assy FPC during mounting.

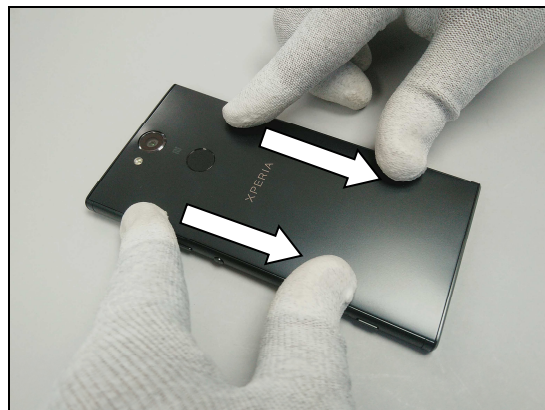
Press to snap the hooks on top side.

Secure the hooks on top side snapped.

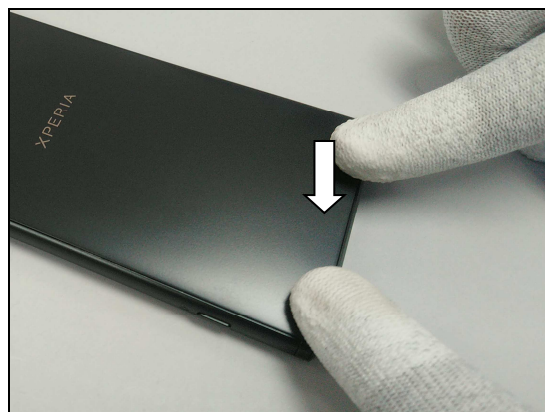


Reassembly

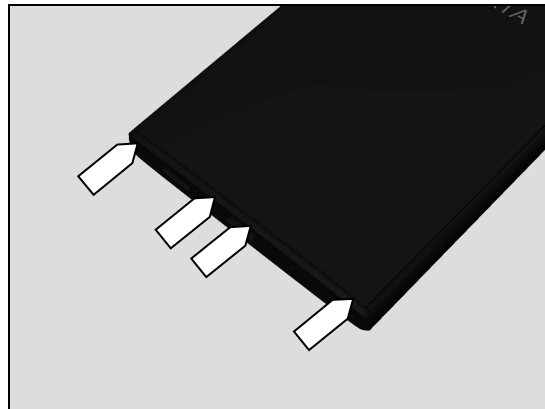
Press left and right side to secure attachment.



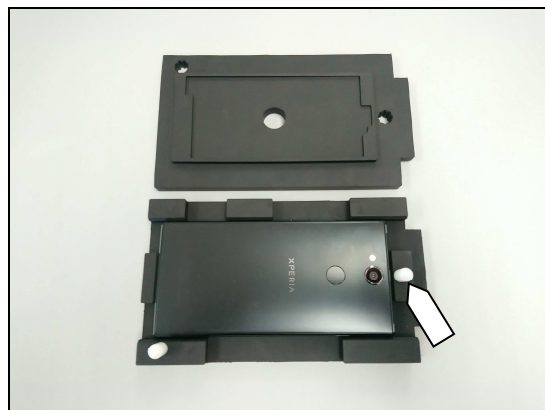
Press to snap the hooks on bottom side.



Secure the hooks on bottom side snapped.

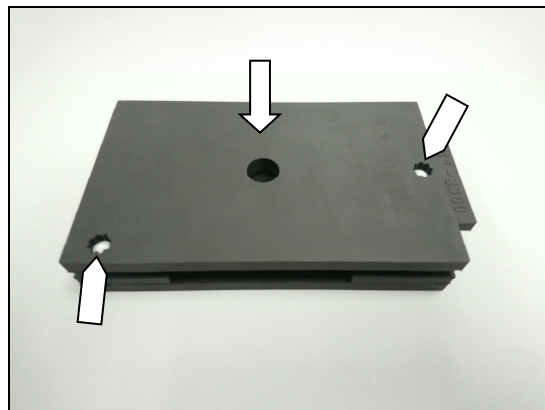


Mount the phone in its proper direction onto bottom part of the Press Rubber Inlay as shown in picture.



Reassembly

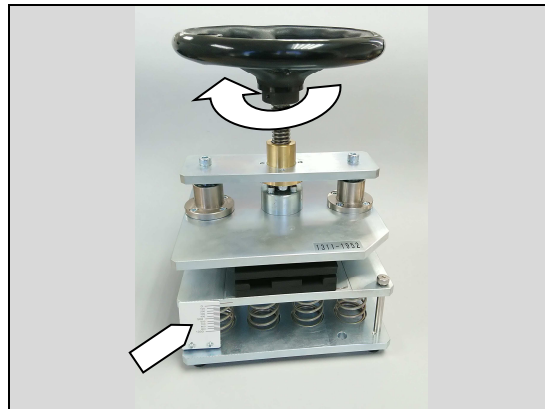
Mount upper part of the Press Rubber Inlay in its proper position by using position pins and holes.



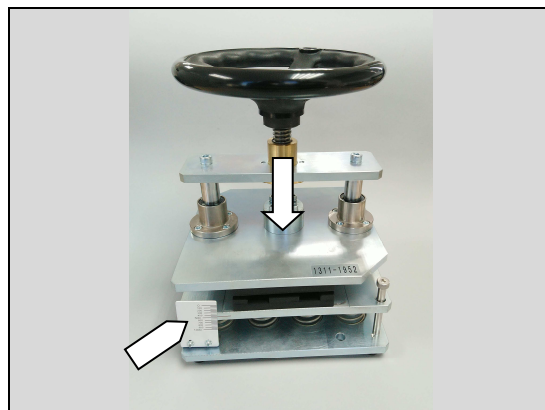
Insert Press Rubber Inlay (with the phone in it) into Generic Wheel Press Tool as shown in picture.



Rotate as shown in picture to secure the proper press force.

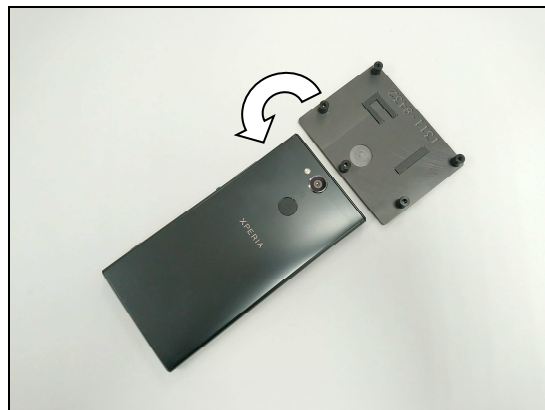


Press the Battery Cover Assy with 500N for 30 seconds.

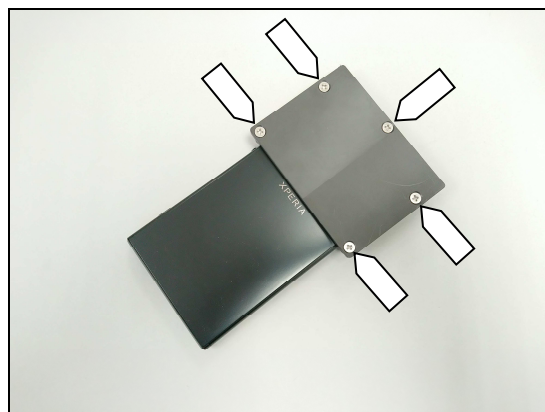


Reassembly

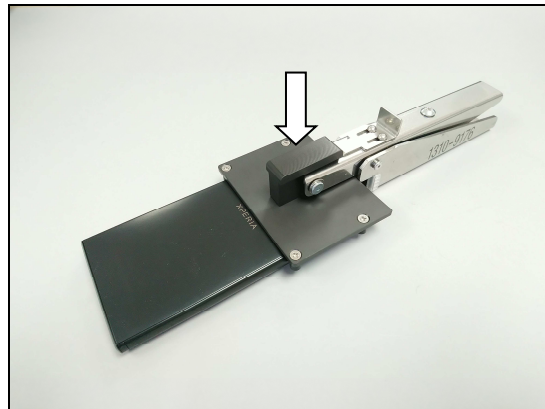
Mount the Press Pad NFC as shown in picture.



Position the Press Pad NFC by using position pins as shown in picture.

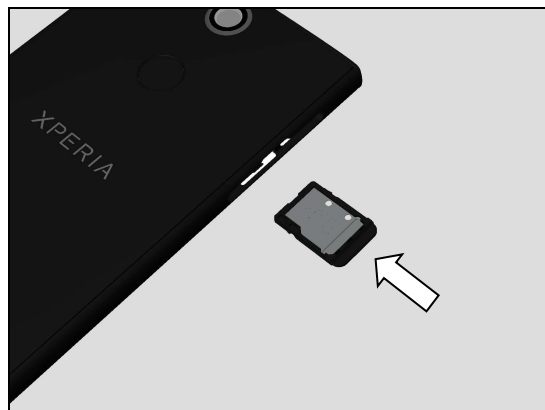


Press the Adhesive NFC_A and Adhesive NFC_B by using Press Clamp for 10 seconds.



5.18 SD Tray (H3113,H3123,H3133) or SD/SIM Tray (H4113/H4133)

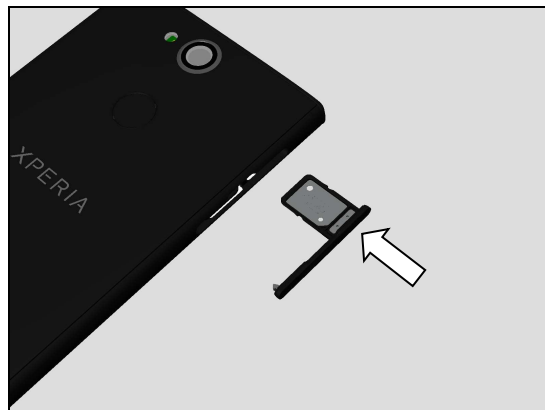
Insert the SD Tray or SD/SIM Tray.



Reassembly

5.19 Cap Tray SIM

Insert the Cap Tray SIM.



6 Battery Reuse Instruction

**If you intend to reuse the Battery, carefully follow the Battery Reuse Instruction.
If it is failed, Don't reuse, and Scrap the Battery.**

6.1 Battery Handling Notices

1. Don't damage the battery foil with sharp objects.
2. Don't twist or deform the battery.
3. If the battery is dropped, don't reuse, and scrap.
4. Hold the battery at the frame edges of battery (green circled portion).



6.2 Dot Mark Check

Check if the Battery (which has been removed from the unit) has blue/red or black/red dots marking.

Do not reuse, if the Battery has two (2) red dots marking, and scrap it.

Blue and black dot indicates Battery had been removed from the unit, and red dot indicates Battery had been reinstalled (reused).

Scrap! If the battery has two (2) red dots marking, it can't be reused for third times.

Can be reused



Can't be reused → Scrap



6.3 Dot Marking 1

If no dot marking on the Battery, put black dot marking with permanent pen.



Battery Reuse Instruction

6.4 Appearance Check

Check if any damages on the battery such as Winkle, Bubble, Dent, Floating up the AL sheet, Twist, and/ or Line.

If it is out of below specification, do not reuse, and scrap the battery.

Item of Damage	Limit of size	Limit of quantity
Winkle	Length $\leq 5\text{mm}$	1 wrinkle per Al sheet
Mark	No mark is allowed.	
Bubble	Diameter $\leq \Phi 2\text{mm}$	3 bubble per Al sheet
Dent	Diameter $\leq \Phi 2\text{mm}$	3 dents per surface
Scratch	Scratch is allowed as far as printed characters are visible.	
Lift up Al Sheet	No lifting up of the Al sheet is allowed.	
Twist	Twist line is allowed.	
Line	No line is allowed.	

Definition of Damages and Sample Pictures

Wrinkle:

A slight line or fold on label or tape of the battery.



Mark:

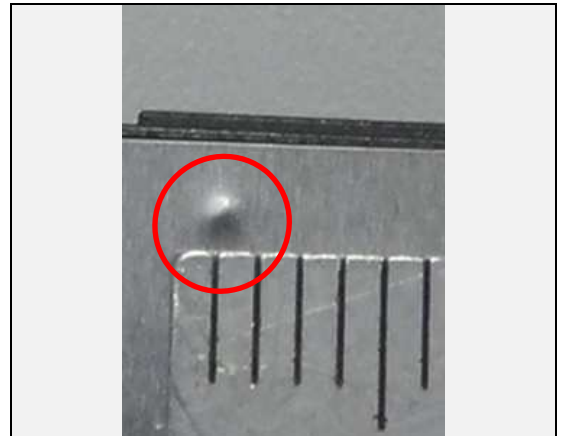
Surface is bulged as lined by foreign material is located between Al sheet and battery cell housing.



Battery Reuse Instruction

Bubble:

Surface is bulged as pointed by foreign material is located between Al sheet and battery cell housing.



Dent:

It is caused that is stuck by sharp pointed objects.



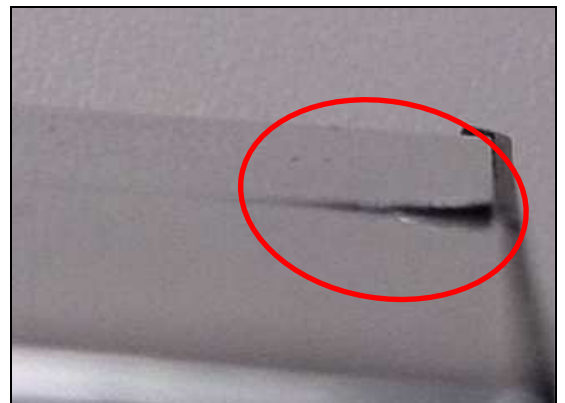
Scratch:

It is caused that scratched by sharp edge/pointed objects.



Lift up Al Sheet:

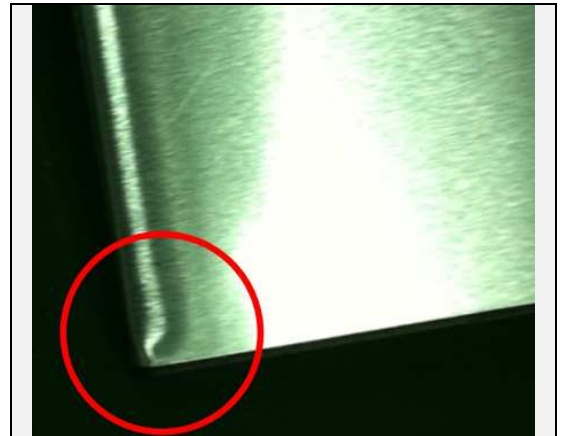
The edge of Al sheet is lifted caused by improper handling.



Battery Reuse Instruction

Twist:

Twisting line locates at the corner of battery pack that is created during Al sheet wrapping.



Line:

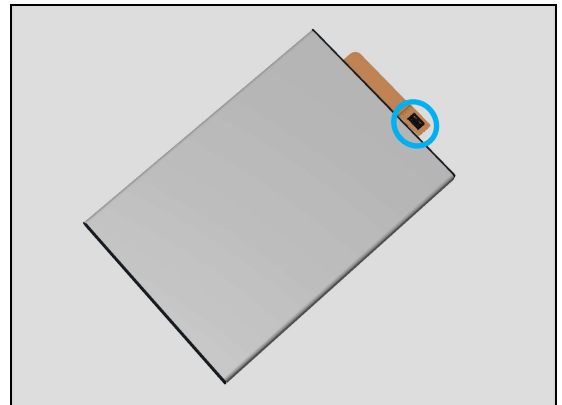
A slight line located at the border of battery cell and frame.



6.5 BtB Connector Check

Check if BtB connector has damages.

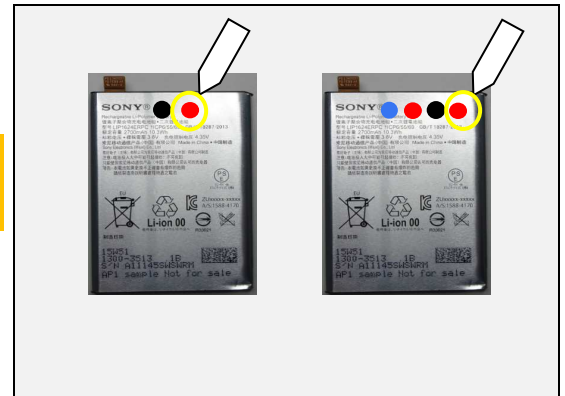
If any damages on the BtB connector, do not reuse, and scrap the battery.



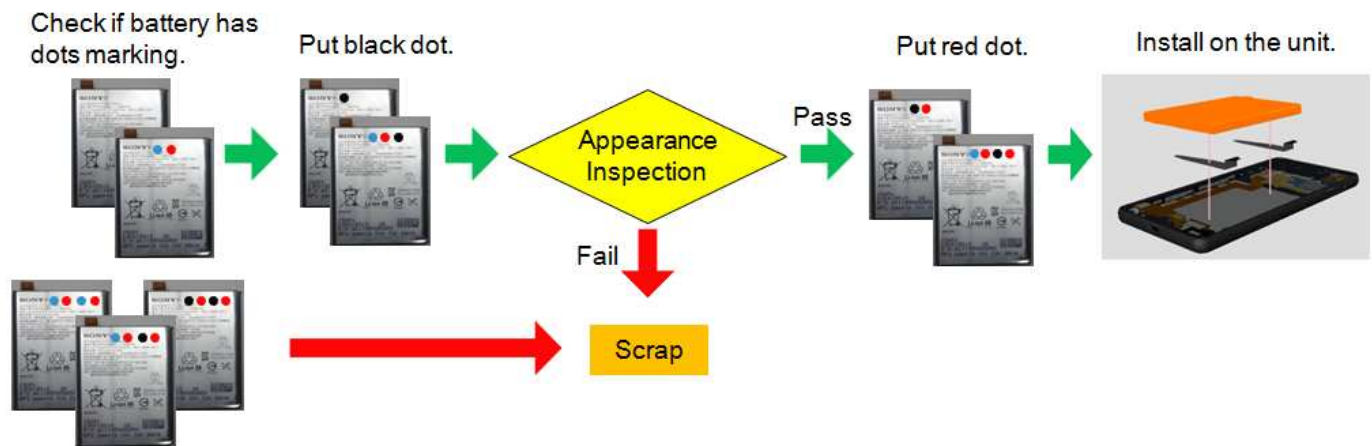
Battery Reuse Instruction

6.6 Dot Marking 2

If no failure has been detected by above appearance check, put the red dot marking on the Battery with permanent pen for reinstalling (reuse).



Overall procedure for Battery Reusing



7 Revision History

Rev.	Date	Changes / Comments
1	2018-Jan-12	Initial release
2	2018-Jan-18	Updated chapter 2. Updated chapter 5.14.2. Added more notes and modified some instruction's descriptions in chapter 4 and chapter 5 in order for further reminding and better understanding.